



**NLWKN.**  
Für Mensch und Umwelt.  
Für Niedersachsen.

## Integrated LIFE Project Atlantic Sand Landscapes



**Niedersachsen**



## GENERAL DESCRIPTION OF THE EXCURSION

The excursion takes participants to the famous Lüneburger heathlands, known as "Lüneburger Heide" south of Hamburg in a 1.5 hour bus ride. The IP LIFE project and its partners have implemented several measures on habitat and species conservation in that area.

The Integrated LIFE project contributes to improve conservation grades of 15 habitat types and 10 species of the FFH-directive annexes. We will visit an inland dune restoration site, nutrient poor freshwater lakes within a carp pond area and learn about the technical aspects of heathland conservation. As connecting habitats is often regarded a complicated and long term effort in conservation, we will walk through a corridor that connects different heather areas for the sand lizard and its predator, the smooth snake.

Other key topics include long term contracts, species conservation, heathland management, extensive aquaculture and conservation of open landscapes.







## SHORT DESCRIPTION OF THE DIFFERENT EXCURSION POINTS

- 9:00** Departure in Hanover
- 10:30** Arrival at the inland dune Großer Sand
- 10:45** Meeting Point: Brief introduction to the project by the project management
- 11:00** **Start of the excursion part 1 – Großer Sand –** excursion points and topics: e.g. inland dune vegetation and species, construction measures, valuable habitat types (2310, 2320, 2330), conservation measures
- 11:45** Departure to Holmer Teiche
- 12:15** Arrival at Holmer Teiche
- 12:30** **Start of the excursion part 2 – Holmer Teiche –** excursion points and topics: e.g. carp pond vegetation and species, construction measures, valuable habitat types (3130), conservation measures
- 13:15** Lunch
- 14:00** Departure to the smooth snake corridor Handeloh
- 14:15** Arrival at the smooth snake corridor Handeloh
- 14:20** **Start of the excursion part 3 – Smooth snake – corridor Handeloh –** excursion points and topics: e.g. smooth snake and the sand lizard, heathland conservation, prunus serotina, cooperation with partners, monitoring construction measures, valuable habitat types (4030)
- 15:40** Gathering at the bus
- 15:45** Departure back to Hanover
- 17:00** Arrival at Hanover

### Connection with themes

This excursion connects with:

**Theme 3:** Added values of Integrated Projects to nature conservation

### Natura 2000 sites visited

*Habitats & Bird Directive Site*

- Lüneburger Heide (DE 2725-301), 23286.00 ha

### Habitats

- 2310 Dry sand heaths with Calluna and Genista
- 2320 Dry sand heaths with Calluna and Empetrum nigrum
- 2330 Inland dunes with open Corynephorus and Agrostis grasslands
- 3130 Oligotrophic to mesotrophic standing waters with vegetation of the Littorelletea uniflorae and/or of the Isoeto-Nanojuncetea
- 4010 Northern Atlantic wet heaths with Erica tetralix
- 4030 European dry heaths



Ministerium für Umwelt, Naturschutz und Verkehr des Landes Nordrhein-Westfalen





### Birds

- Crane (*Grus grus*)
- Woodlark (*Lullula arborea*)
- Red-backed Shrike (*Lanius collurio*)
- Ziegenmelker (*Caprimulgus europaeus*)

### Mammals

- Wolf (*Lupus lupus*)

### More Species

- Crested newt (*Triturus cristatus*)
- Common spadefoot toad (*Pelobates fuscus*)
- Smooth snake (*Coronella austriaca*)
- Sand lizard (*Lacerta agilis*)

### People

During the site visit, various parties involved in the management will be present to discuss the management and explain the local situation. The following people will join the excursion:

- Project executing agency - NLWKN: Tom Kutter (project management)
- Project partner - Verein Naturschutzpark Lüneburger Heide (VNP): Dirk Mertens (head of landscape management)
- Project partner – Lower Saxony State Forest Department Sellhorn

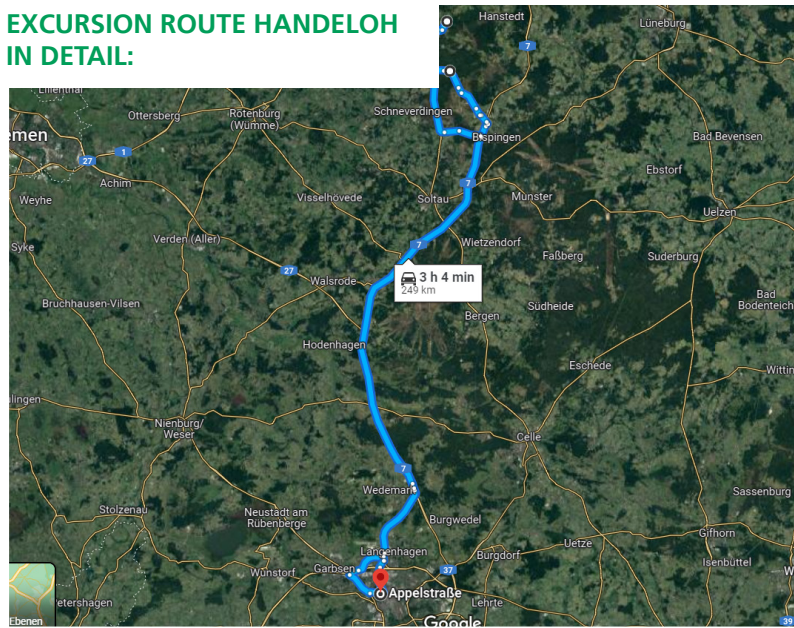
### Practical informations

- Outdoor clothing and sturdy shoes
- Rain, sun and mosquito protection
- Toilets (only during lunch break)
- Length of the entire route: 7 km (pure walking time without stops approx. 2 hours)
- Nature of the route: partly soft and uneven terrain, partly bulges, depressions and high stands of whistling grass
- 1 group photo is planned

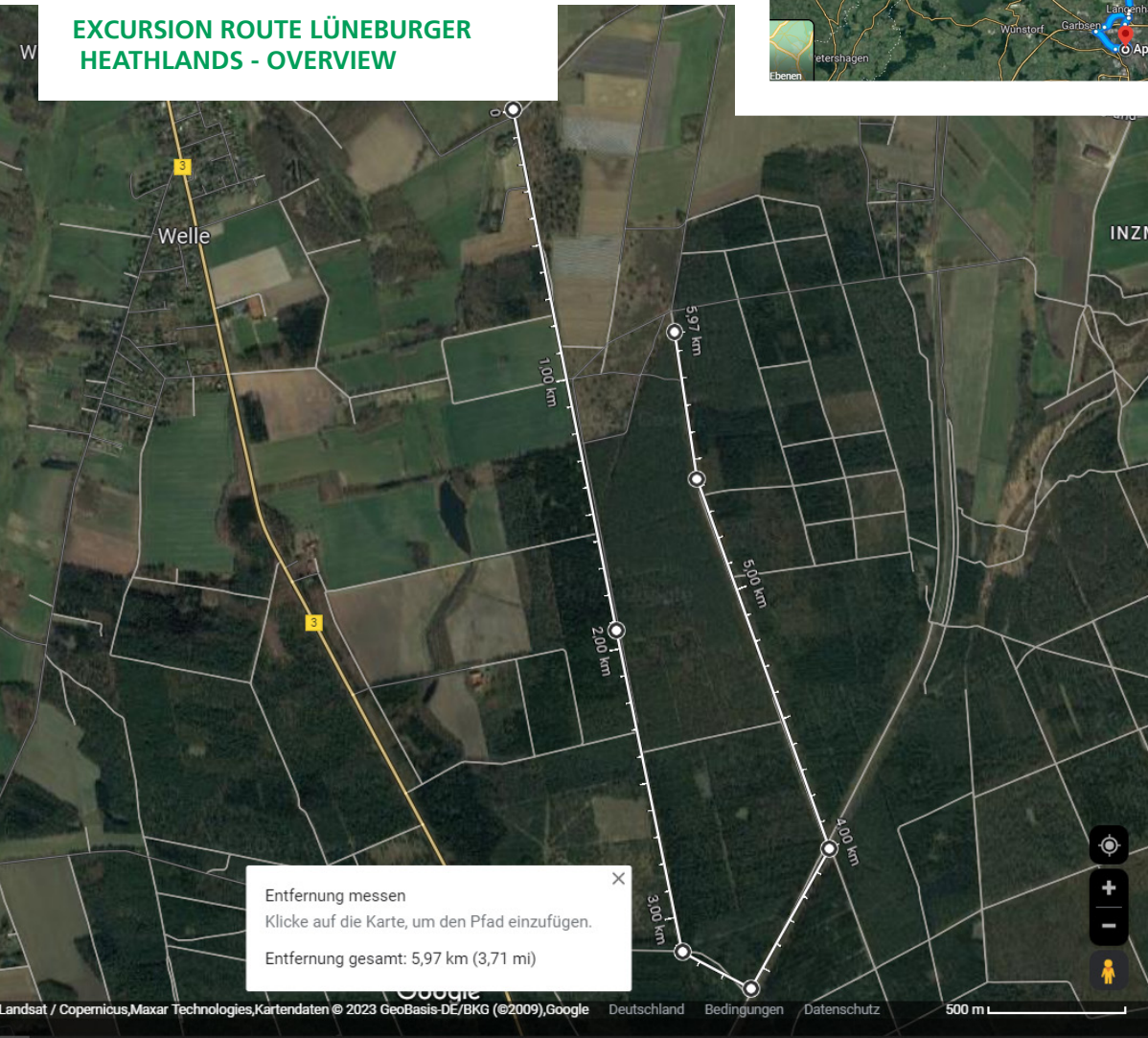
### Info

<https://www.sandlandschaften.de/de/index.html>

### EXCURSION ROUTE HANDELOH IN DETAIL:



### EXCURSION ROUTE LÜNEBURGER HEATHLANDS - OVERVIEW



Entfernung messen  
Klicke auf die Karte, um den Pfad einzufügen.  
Entfernung gesamt: 5,97 km (3,71 mi)