



4th Natura 2000 Boreal Seminar Helsinki, Finland

Natura 2000 Biogeographical Process

State of play of the improvement pledges for the Boreal Region

Irene Bouwma & Lian Grabijn (WUR)



The improvement pledge

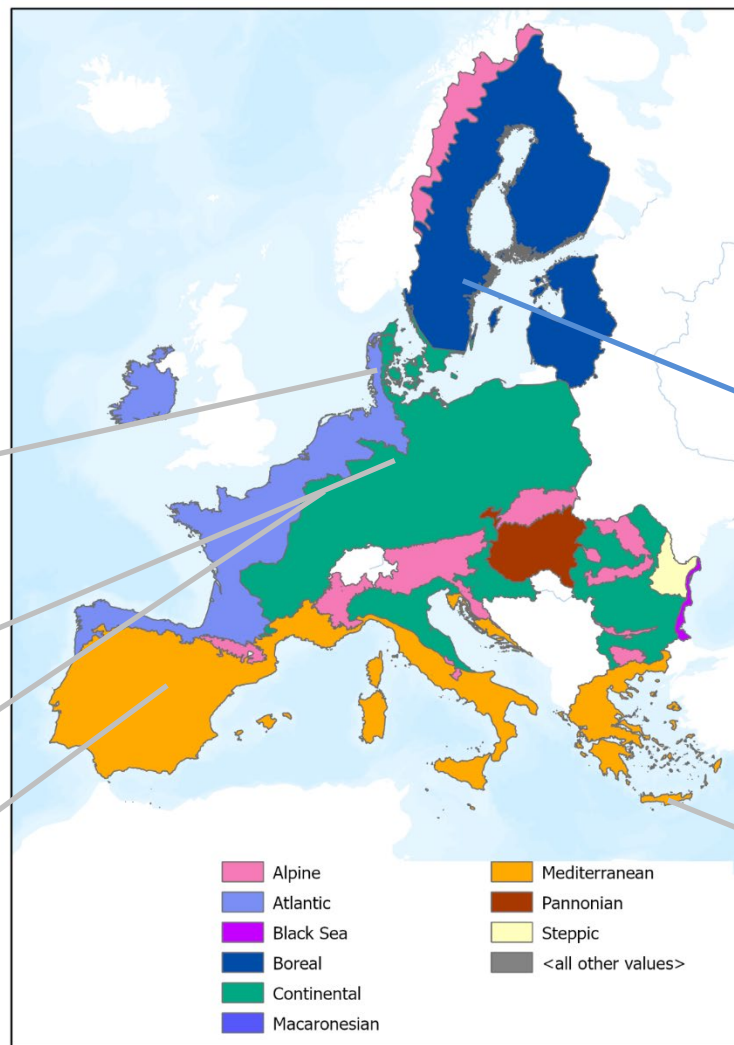
Natura 2000 Biogeographical Process

Ambition of the pledge process:

- Improvement of status and **trends** for 30 % of species and habitats **assessments at MS level**
- No further deterioration in conservation trends and status
- No unknown assessments due to lack of data
- Identifying limitations to achieving non-deterioration



Marsh saxifrage (*Saxifraga hirculus*)
©Saxifraga- Bart Vastenhouw



Denmark

Germany

Luxembourg

Spain

Sweden

Pledges received from Member States so far (blue = Boreal region)

Cyprus



Analysis undertaken so far...

Natura 2000 Biogeographical Process

Member State level

- Completeness
- 30 % improvement target reached

Boreal region

- Habitats and species groups pledged for improvement & non-deterioration
- Current Conservation status of pledged species and habitats groups for improvement & non-deterioration
- Habitat types and species for which deterioration is unavoidable



How is status assessed for Habitats Directive?

Natura 2000 Biogeographical Process

Status in MS Biogeographical region

- Good (FV)
- Poor (U1)
- Bad (U2)
- Unknown

Trend

- Improving (I)
- Stable (S)
- Deteriorating (D)
- Unknown (U)

For more information: <https://www.eea.europa.eu/en/topics/at-a-glance/nature/state-of-nature-in-europe-a-health-check/explore-nature-reporting-data>



How is status assessed for Birds Directive?

Natura 2000 Biogeographical Process

Trend (short & long term)

Increasing (I)

Stable (S)

Fluctuating (F)

Decreasing (D)

Unknown/uncertain (U)



Status EU level

Secure

Threatened, declining, depleted

Threatened

Unknown

For more information: <https://www.eea.europa.eu/en/topics/at-a-glance/nature/state-of-nature-in-europe-a-health-check/explore-nature-reporting-data>



Member State -Completeness

Natura 2000 Biogeographical Process

Are all species and habitat assessments with a non-favourable/non-secure status or unknown status covered?

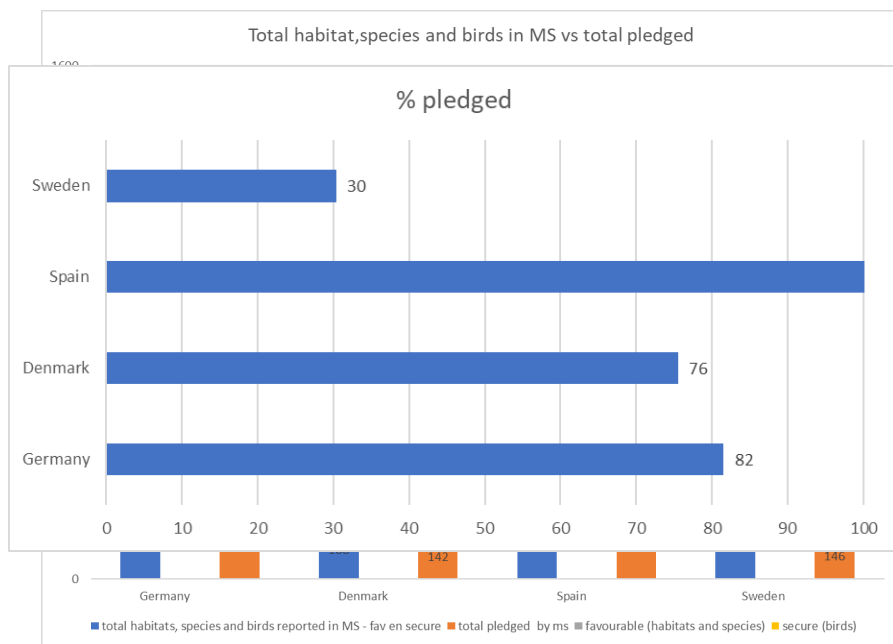
	Habitats	Species
U1-I	x	x
U1 -S	x	x
U1-D	x	X
U1- UKN	x	x
U2- I	x	x
U2- S	x	x
U2-D	x	X
U2-UNK	x	x
FV -I		
FV-S		
FV-D		
FV-UNK		
XX	x	x

Birds – short term trend	
secure	
near threatened	x
declining	x
depleted	x
fluctuating	x
unknown	x



Member State -Completeness

Natura 2000 Biogeographical Process



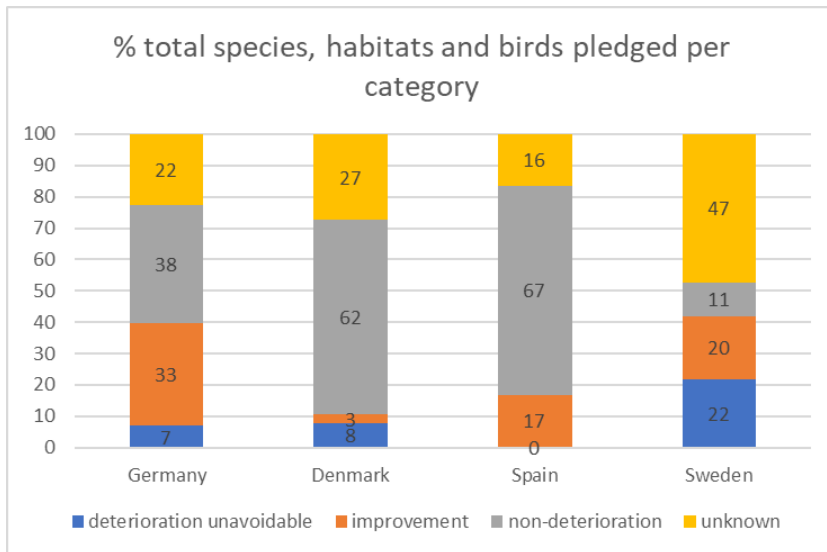
Conclusions

- Sufficiency of pledges is relatively high
- Swedish pledge is low compared to other pledges submitted
- Species not pledged:
 - Wintering and passing birds
 - Habitats and species with stable or increasing trends (GE/DK)
- Data information errors



Member State - 30% improvement target reached

Natura 2000 Biogeographical Process



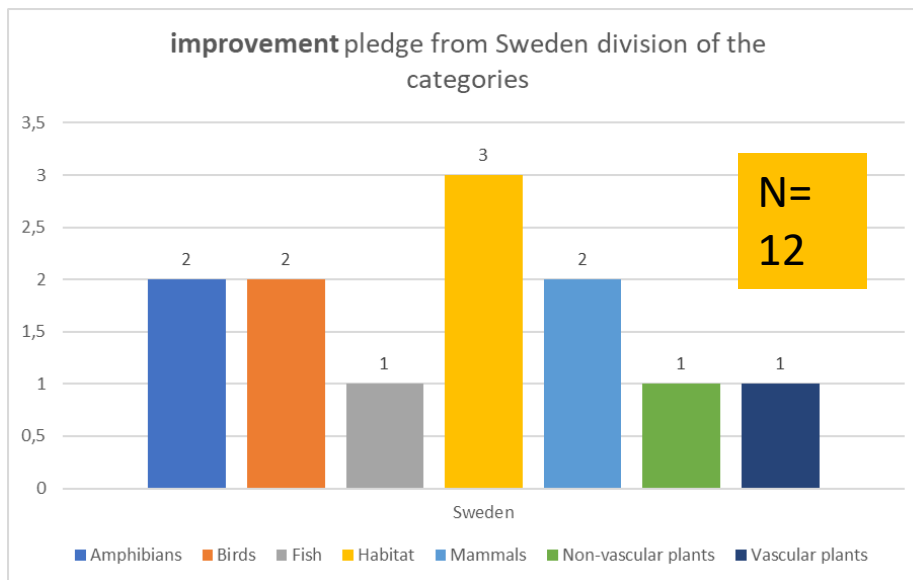
Do Member States pledge to improve 30% of species and habitat assessments for achieving improving trends by 2030?

- Not all Member States reach the target
- Sweden & Denmark pledges low
- Possible explanation
 - Unclearly on whether all species or only species with declining trend needed to be pledged for improvement ?



Pledged for improvement- Boreal region

Natura 2000 Biogeographical Process



- The pledge is equally distributed amongst the different species groups and habitats
- Habitat types pledged for improvement :
 - H-7120-Degraded raised bogs still capable of natural regeneration
 - H-9110-Luzulo-Fagetum beech forests
 - H-9130-Asperulo-Fagetum beech forests

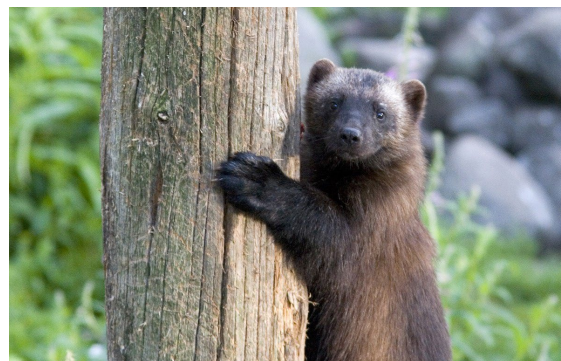


Some examples species

Natura 2000 Biogeographical Process



Agile frog (*Rana dalmatina*)
© Saxifraga- Dirk Hilbers



Wolverine or glutton (*Gulo gulo*)
© Saxifraga-Mark Zekhuis



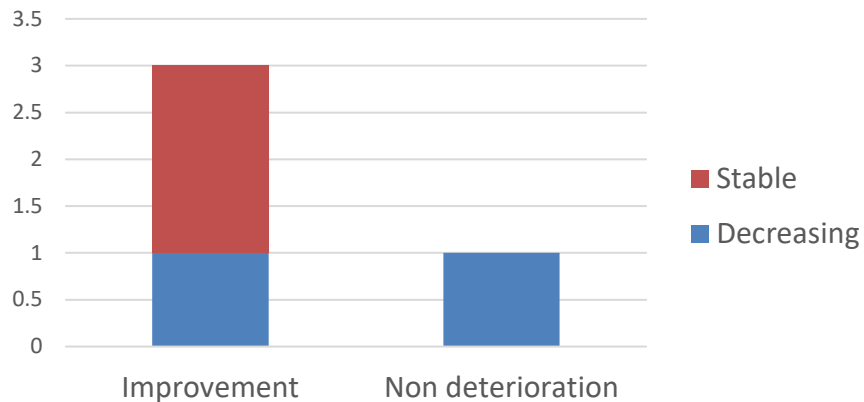
Bullhead (*Cottus gobio*)
© Saxifraga- Eric Gibcus



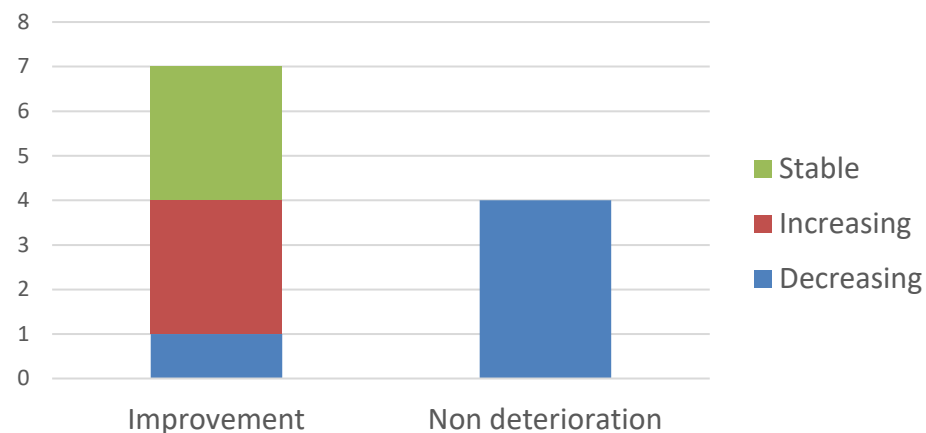
Current conservation status pledged species and habitats

Natura 2000 Biogeographical Process

Trend of habitats pledged by Sweden for improvement and non-deterioration



Trend of species in pledged by Sweden for improvement and non-deterioration



Source Conservation status: Art. 17 reporting (2012-2018) database



Current conservation status pledged birds

Natura 2000 Biogeographical Process

*EU trend :
Decreasing*



Montagu's Harrier (*Circus pygargus*)
© Saxifraga- Mark Zekhuis

*EU trend :
Decreasing*



Dunlin (*Calidris alpina schinzii*)
© Saxifraga-Piet Munsterman

*EU trend
:Decreasing*



Garganey (*Spatula querquedula*)
© Saxifraga-Luuk Vermeer



Measures taken for species and habitats

Natura 2000 Biogeographical Process

- Not analysed due to limited data
- Sufficiency of measures difficult to assess
 - For instance
 - Improve condition of existing habitats (either Annex I or species habitats) through active area-based restoration measures
 - Prevent, control, eradicate or mitigate negative impacts of Invasive alien (plant or animal) species



Deterioration unavoidable – Swedish pledge

Natura 2000 Biogeographical Process

- 16 bird species
- 5 Habitat Directive species
- No habitat types



Deterioration unavoidable- birds?

Natura 2000 Biogeographical Process



The spotted redshank
(breeding)
Tringa erythropus
© Saxifraga – Rik Kruit



Long-eared owl (breeding)
Asio otus
© Saxifraga- Mark Zekhuis



Redwing (breeding)
Turdus iliacus
© Saxifraga- Bart Vastenhouw



Deterioration unavoidable- H-species?

Natura 2000 Biogeographical Process



Botrychium simplex
(© Leena Eerelo)



European crayfish (*Astacus astacus*)
Saxifraga-Rudmer Zwerver



Mountain hare (*Lepus timidus*)
Saxifraga-Janus Verkerk



Overall conclusions for Boreal region

Natura 2000 Biogeographical Process

- Only one pledge submitted
- Overall sufficiency is relatively low
- Improvement pledges for species and habitats with decreasing trends
- Relatively high number of species and habitats for which deterioration cannot be halted



Issues for discussion

Natura 2000 Biogeographical Process

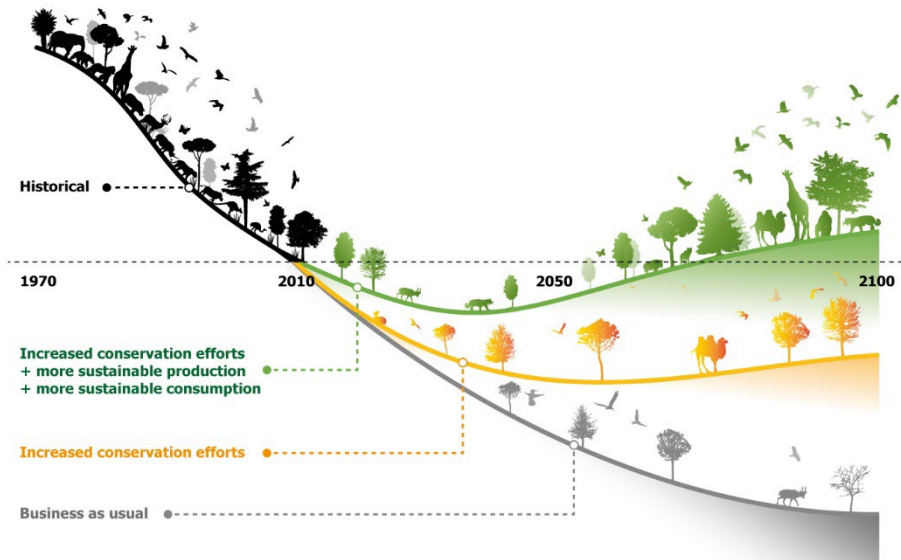
- What is the timeline for submission of the missing pledges?
- Does this analysis reflect the pledges not yet submitted of other Member States?



Issues for discussion

Natura 2000 Biogeographical Process

How feasible is it to reverse trend?



This artwork illustrates the main findings of the article, but does not intend to accurately represent its results (<https://doi.org/10.1038/s41586-020-2705-y>)



4th Natura 2000 Boreal Seminar Helsinki, Finland

Natura 2000 Biogeographical Process

Thank you for your
attention !