

Accounting for climate change

Heini Kujala - Finnish Natural History Museum / Uni Helsinki

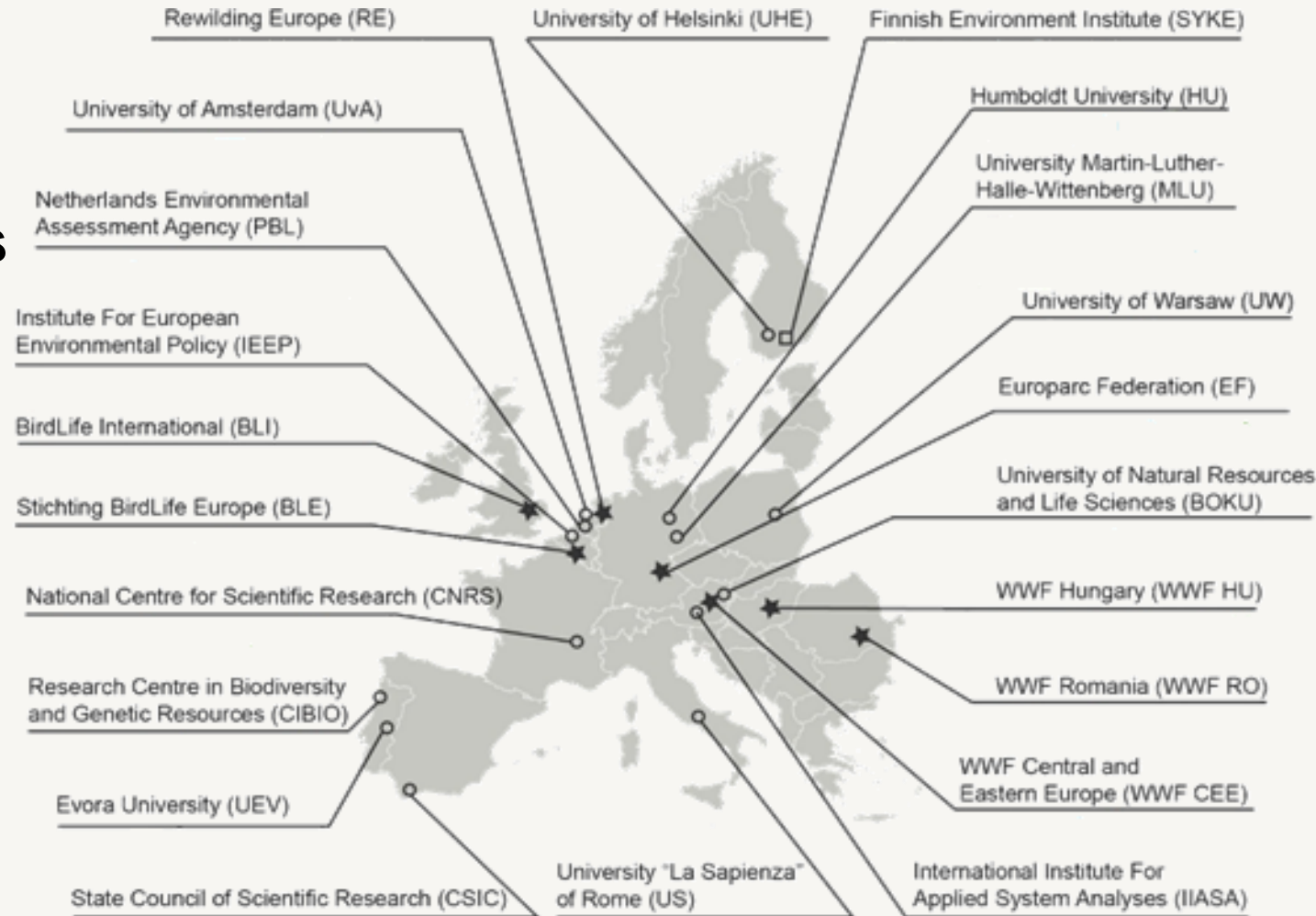


Who we are

Key ambition of NaturaConnect:
co-create with key decision-makers
and stakeholders from EU Member
States **an ecologically**
representative, resilient and well-
connected network of conserved
areas

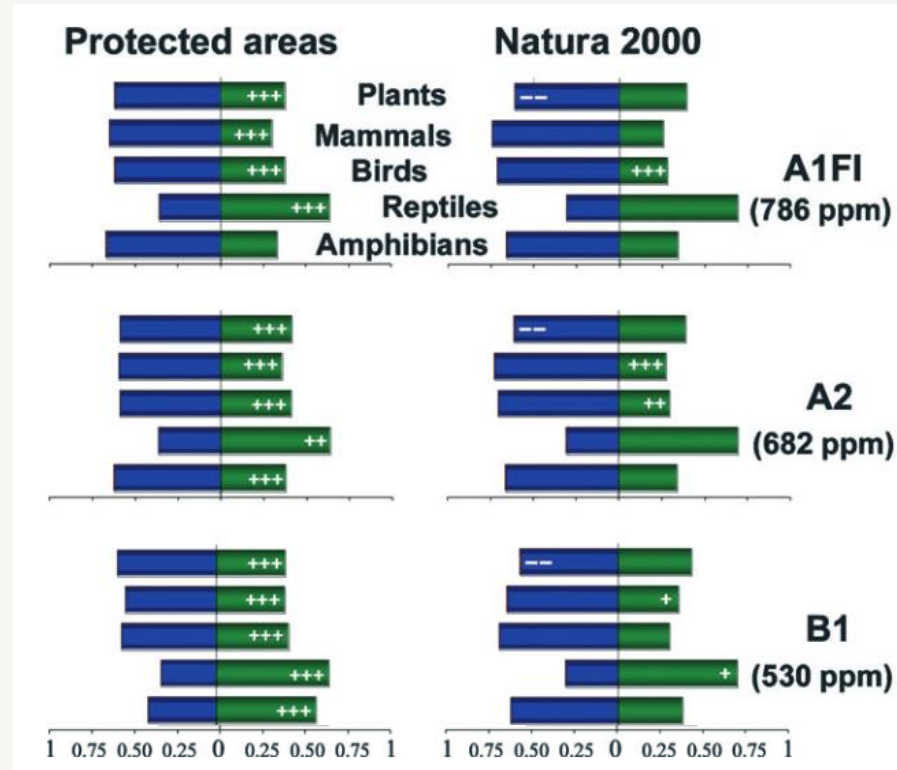
15 Research organisations

7 National agencies & conservation NGOs

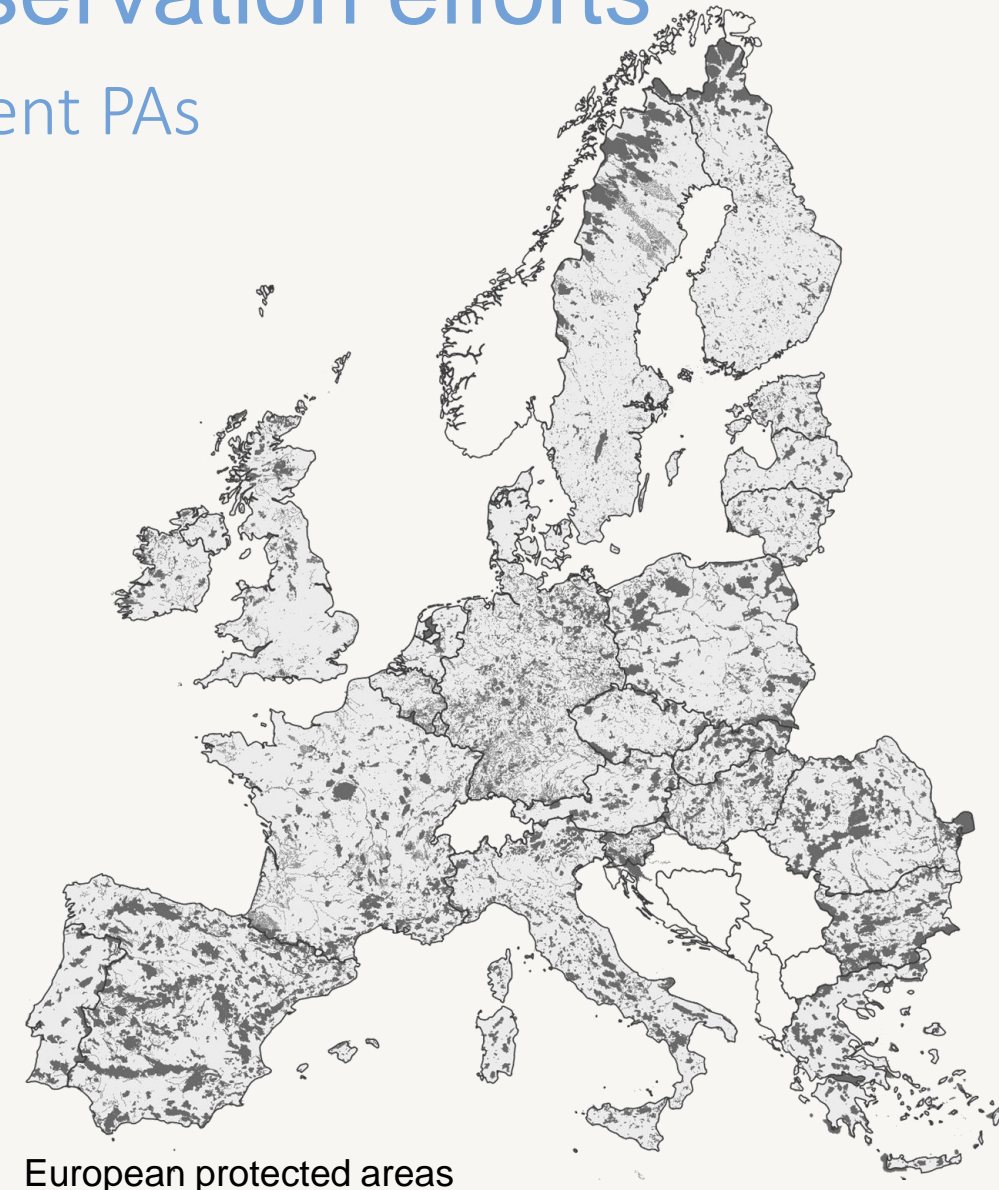


Climate change threatens conservation efforts

Species may shift their ranges outside current PAs



Proportion of species projected to **lose** (lefthand bars) or **gain** (righthand bars) climatic suitability in European protected areas by 2080



European protected areas

Securing climate resilience of PA networks

Under climate change, protecting present habitats is no longer enough

Species current core habitats

strongholds that are needed to support the production of new individuals while populations adapt to environmental changes

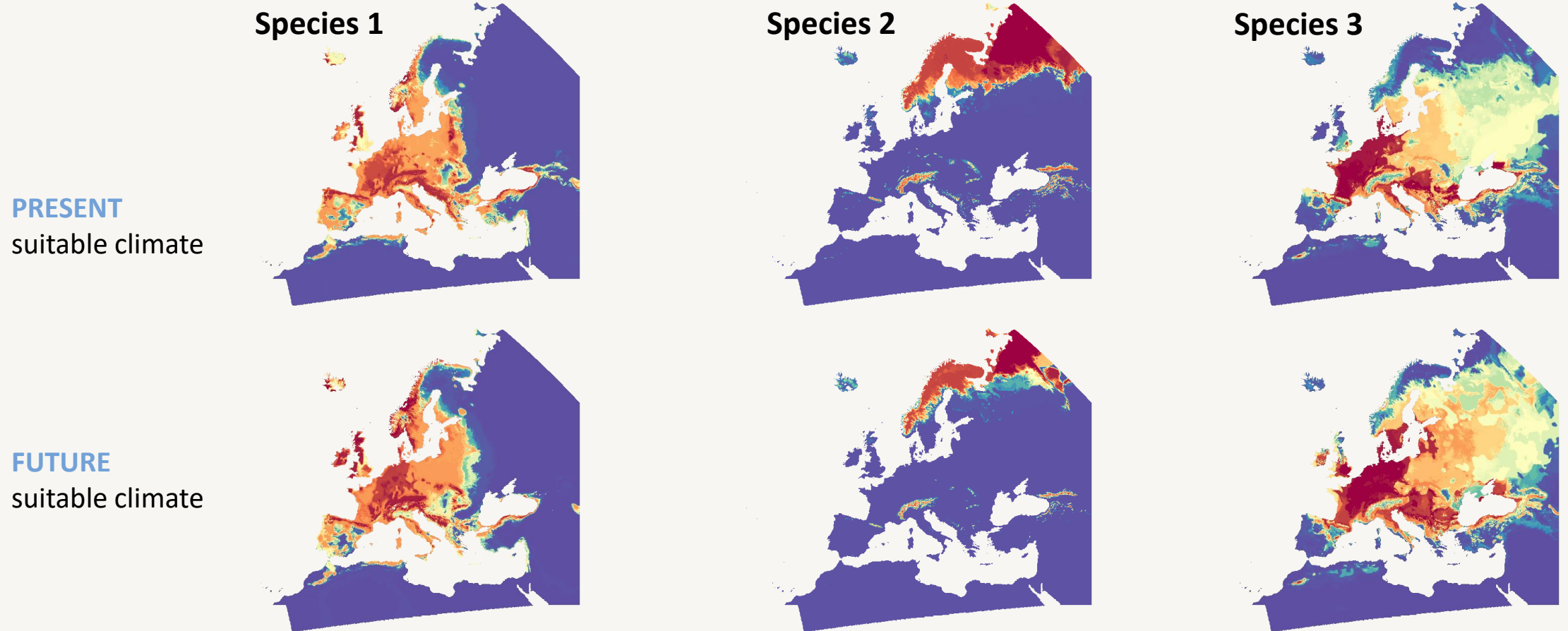
Species future core habitats

species need places to go and persist, and these are the only suitable areas in the long run

Connectivity between present and future

so that the landscape supports the movement of individuals as species shift their ranges to new areas

Species range shifts can be anticipated

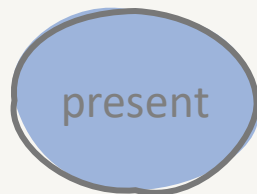


*Please note that these are not the final maps used in NaturaConnect

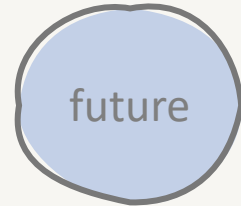
Connectivity between present and future

Factoring in species' dispersal capability and critical connecting areas

**PRESENT
CORE**



**FUTURE
CORE**



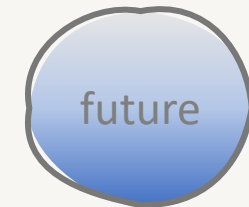
“SOURCES”

areas within present
distribution that are well
connected to the future



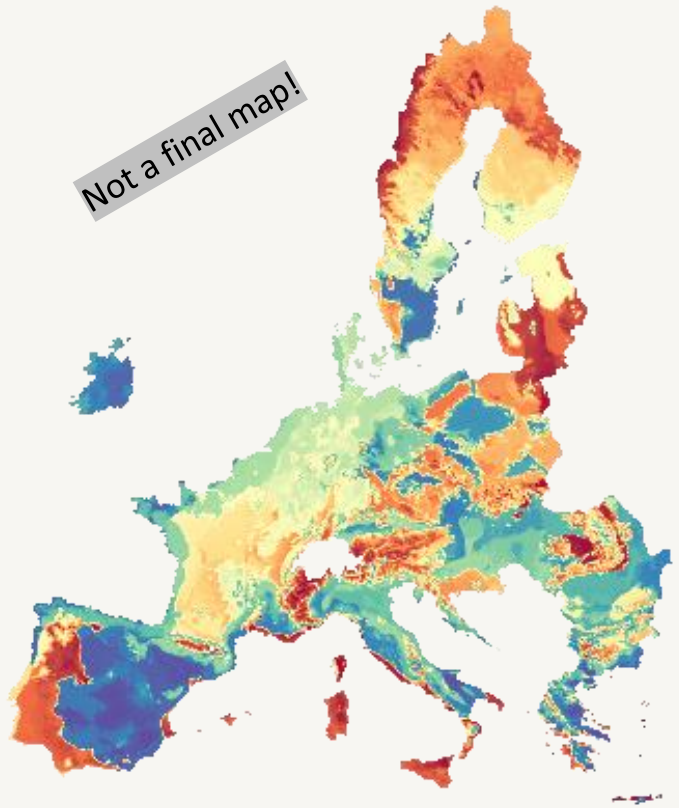
“STEPPING STONES”

areas within future
distribution that are well
connected to the present

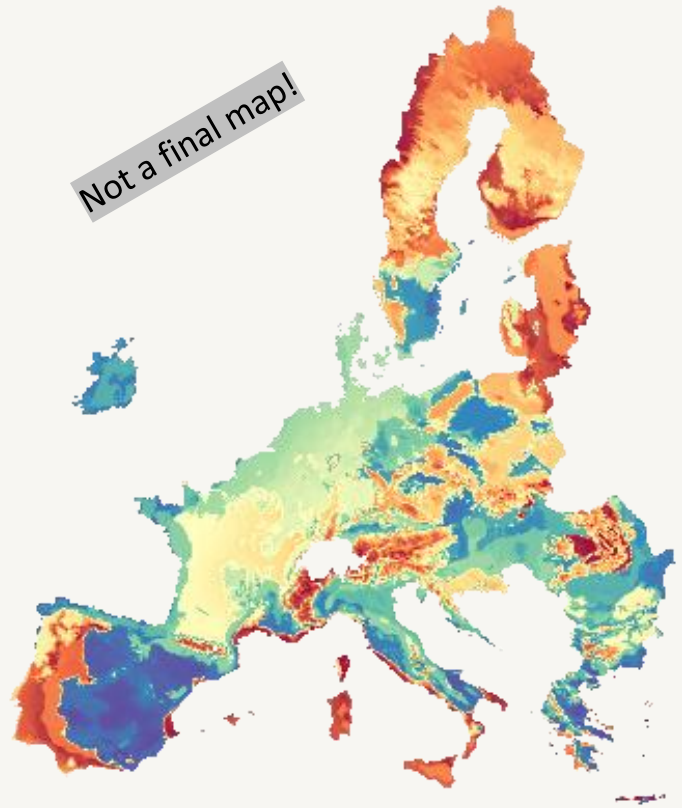


Prioritising for climate resilience

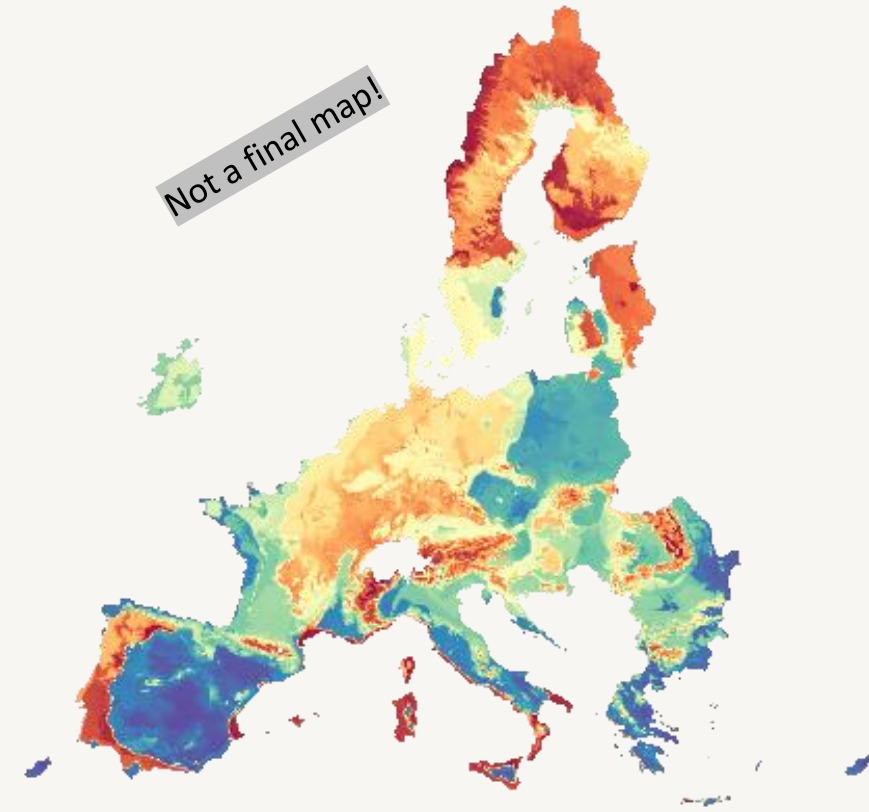
PRESENT



PRESENT + FUTURE
+ CONNECTIVITY



FUTURE



Prioritising for climate resilience

Top 10%

PRESENT

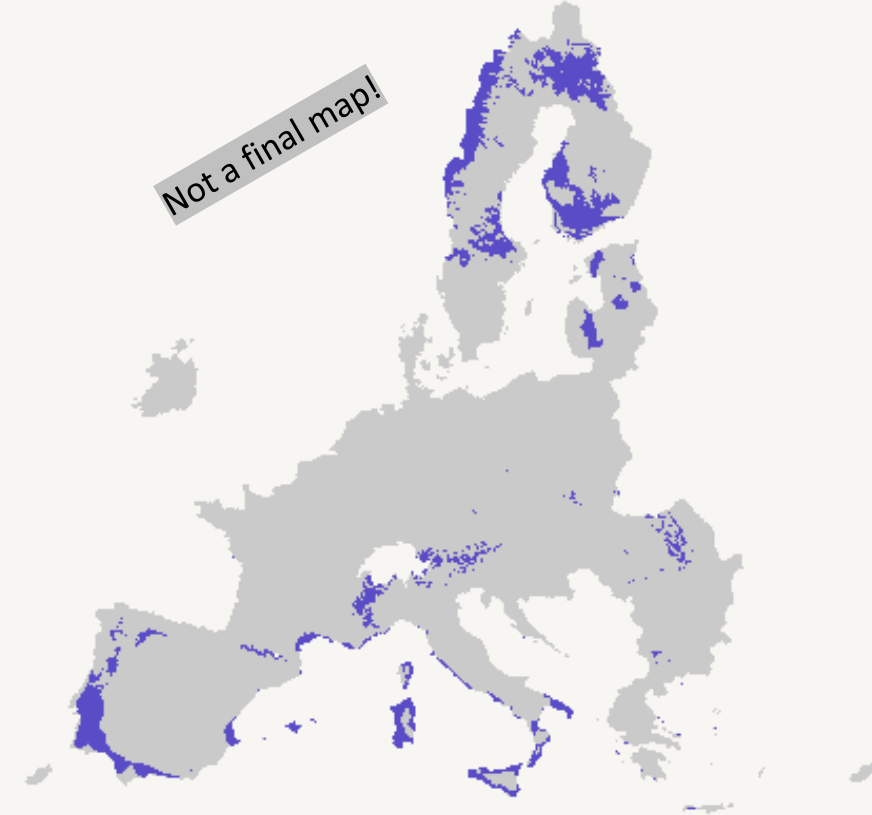
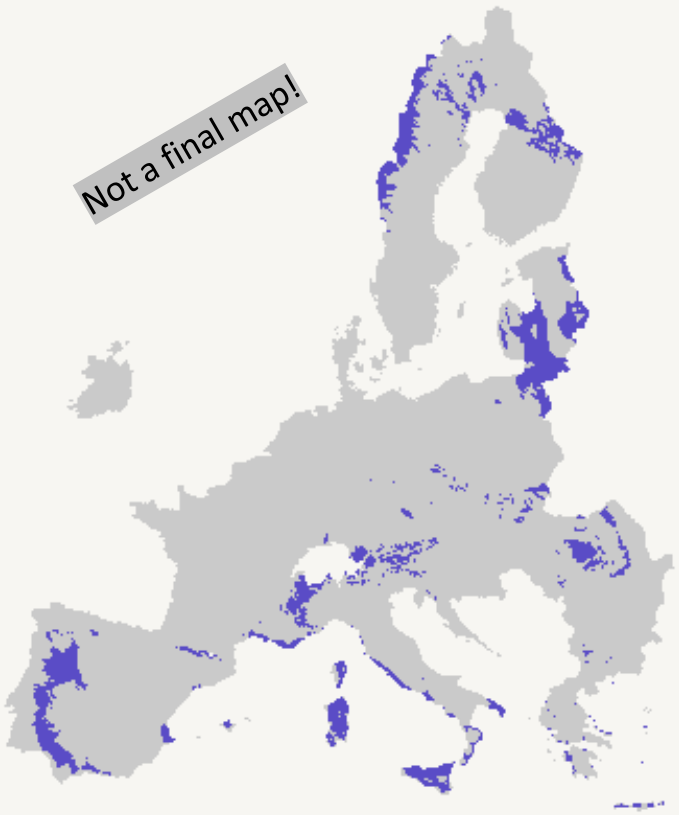
PRESENT + FUTURE
+ CONNECTIVITY

FUTURE

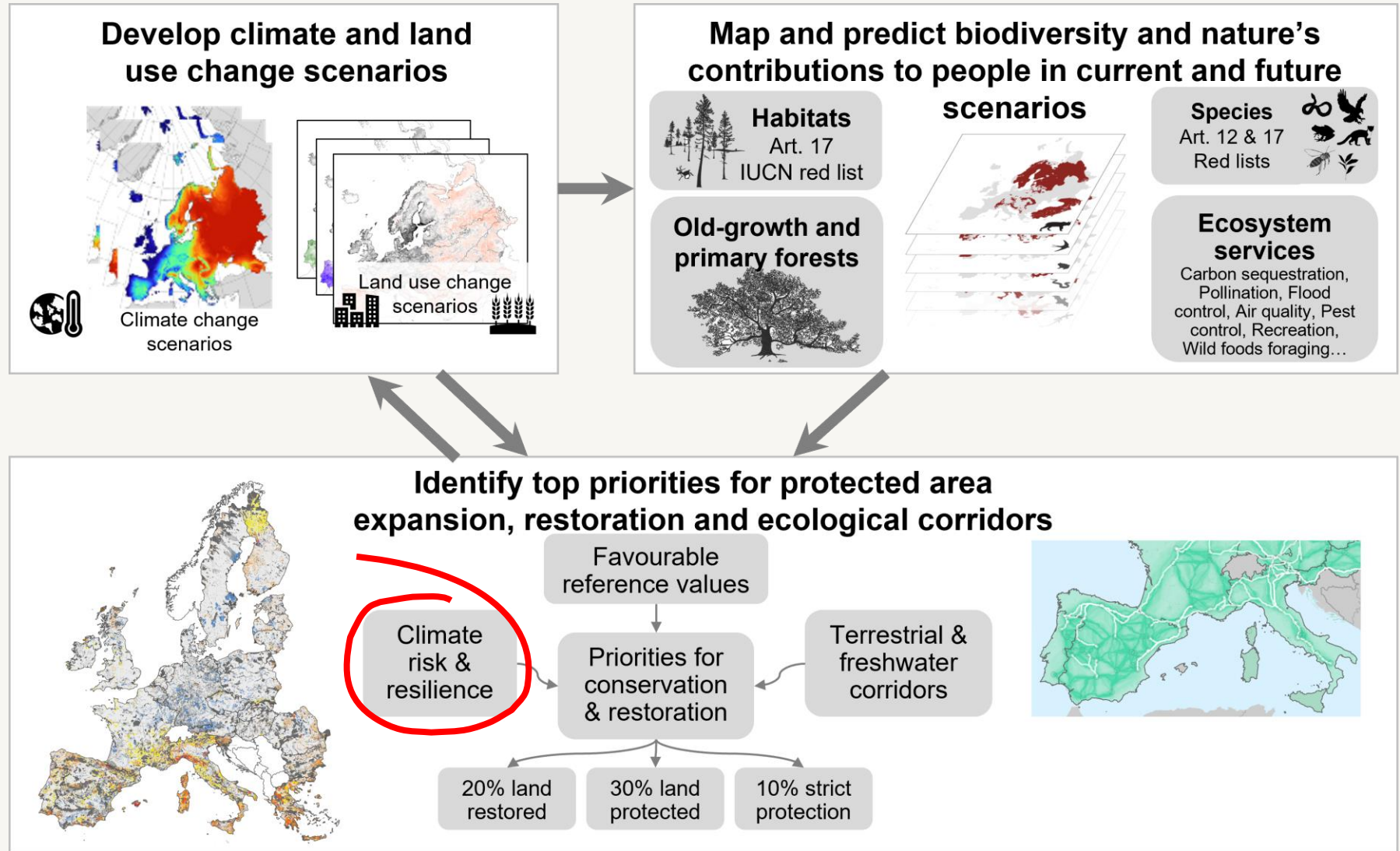
Not a final map!

Not a final map!

Not a final map!



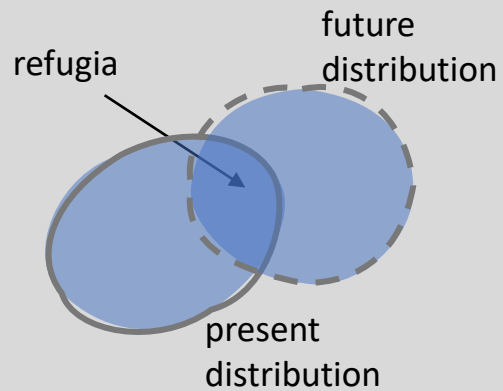
Protected areas for the future, for nature and people



See NaturaConnect's presentation from Tuesday morning

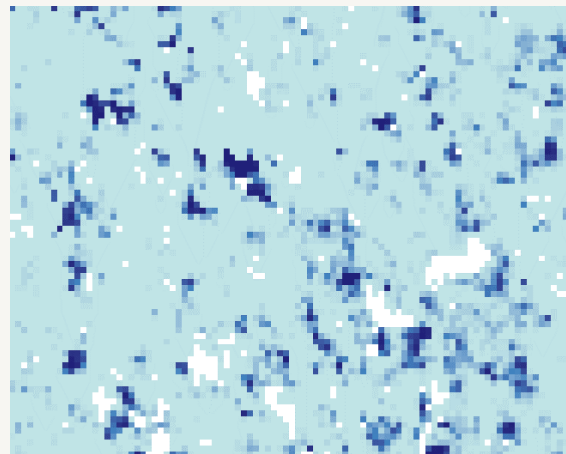
How to plan for uncertain future?

Emphasizing bioclimatic refugia

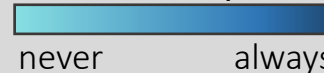


Securing areas that are good now and in the future

Finding robust solutions across alternative futures



How often a priority?



Acceptable balance between *certain* present and *uncertain* future



How much weigh can be given to future areas before we risk protection of present?

Come talk to us!

We hope to be collaborating with you over the next few years

contact us anytime:



naturaconnect.eu



naturaconnect@iiasa.ac.at



[@naturaconnect](#)

