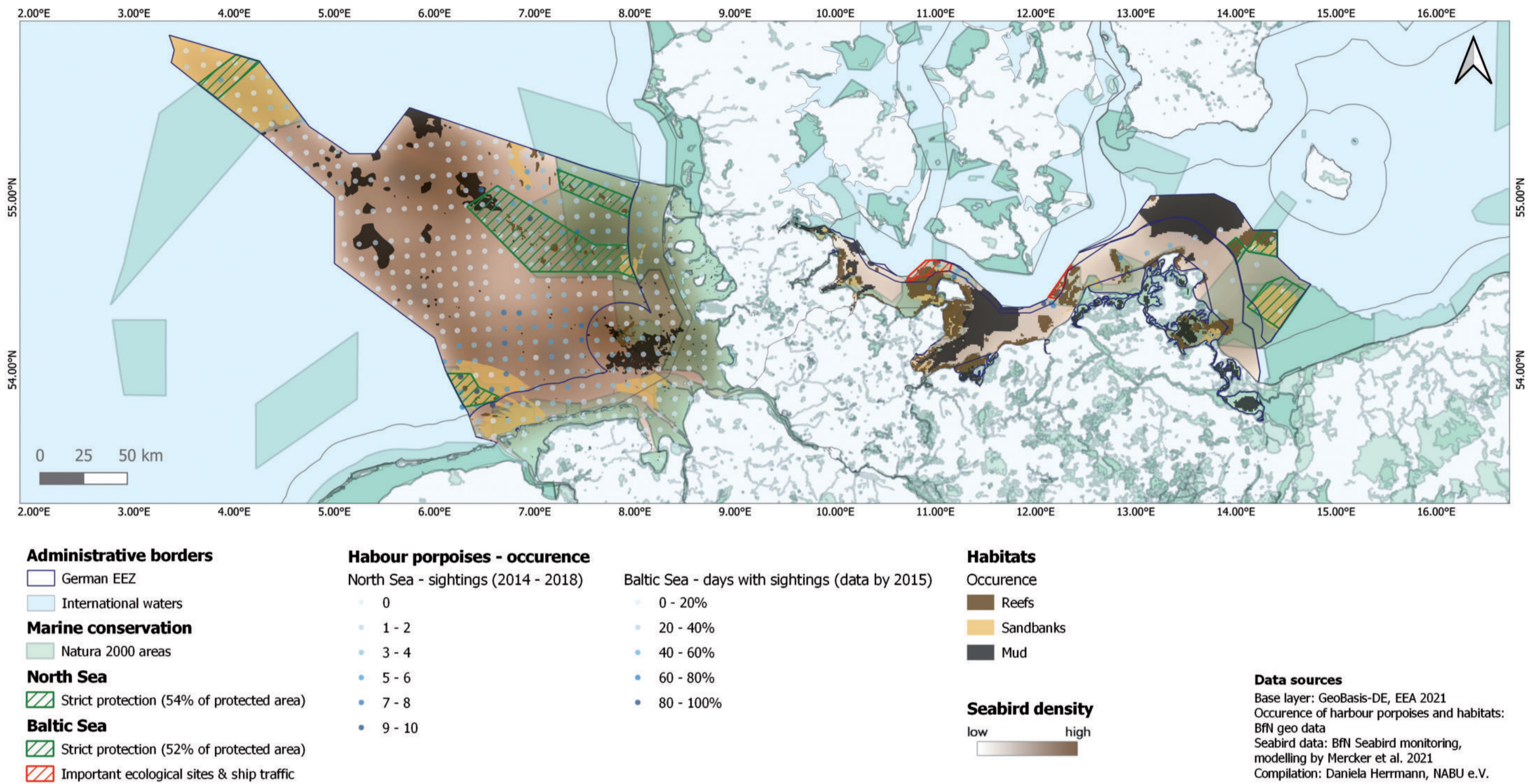
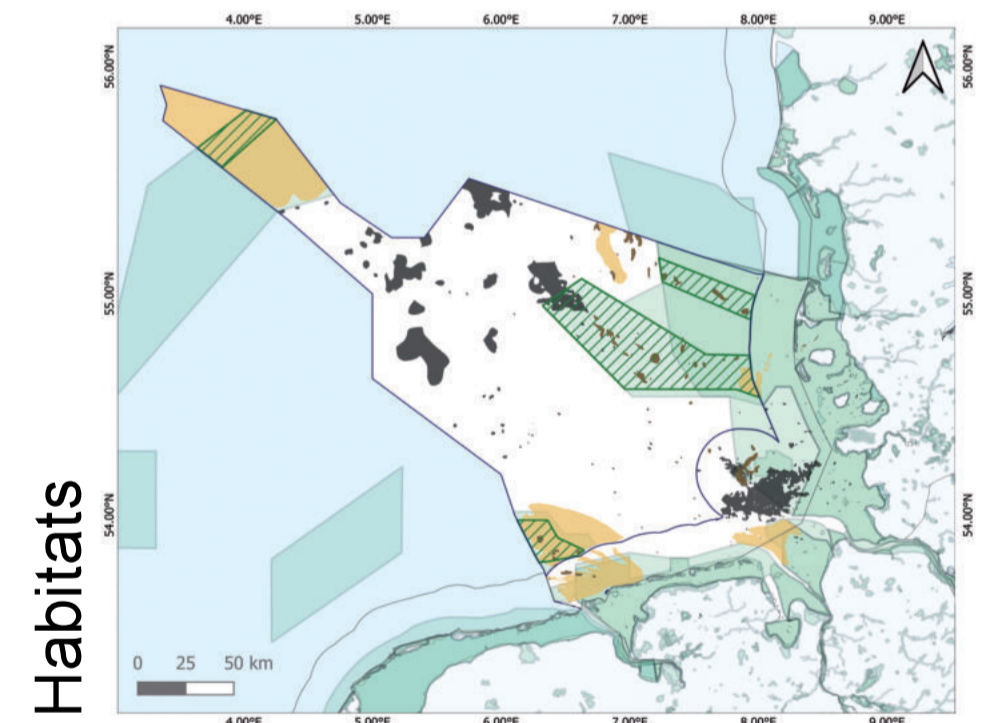
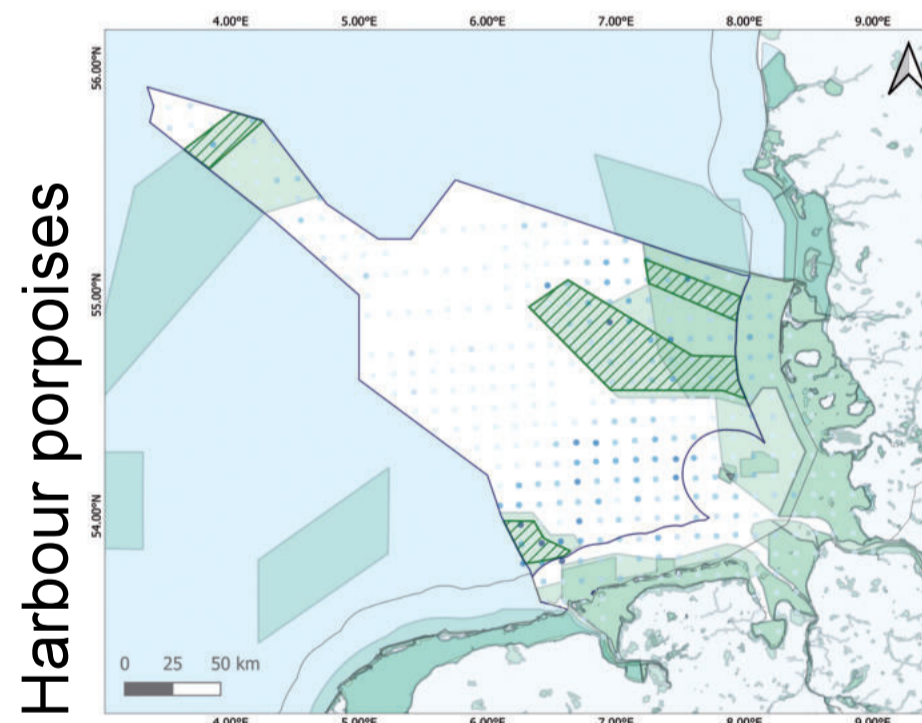
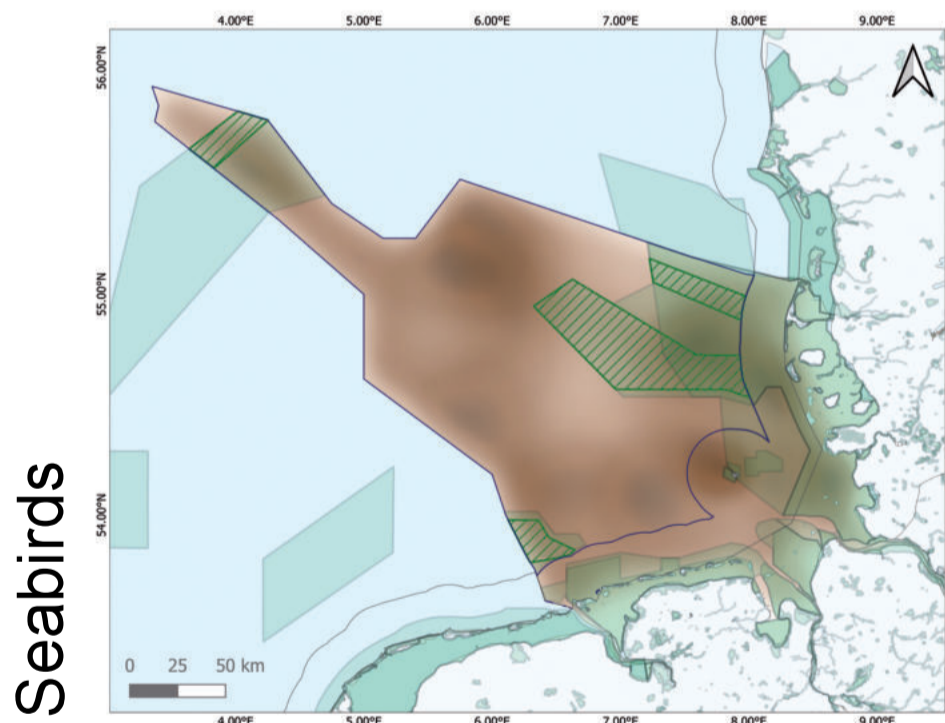


NABU: Proposal for strict protected areas in the German Exclusive Economic Zone of the North Sea and the Baltic Sea

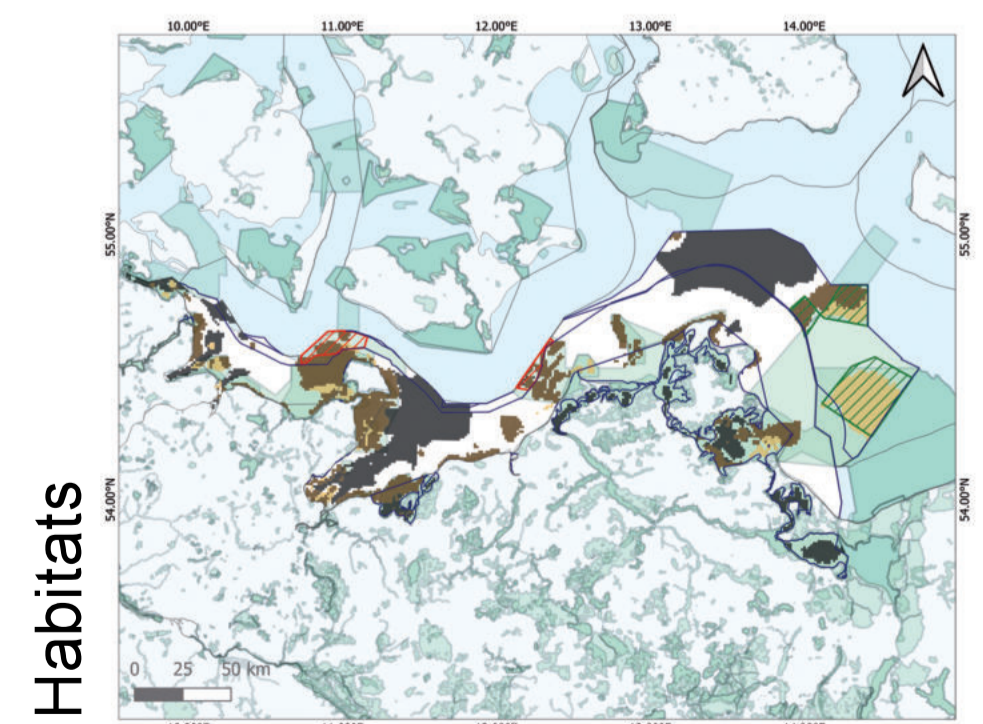
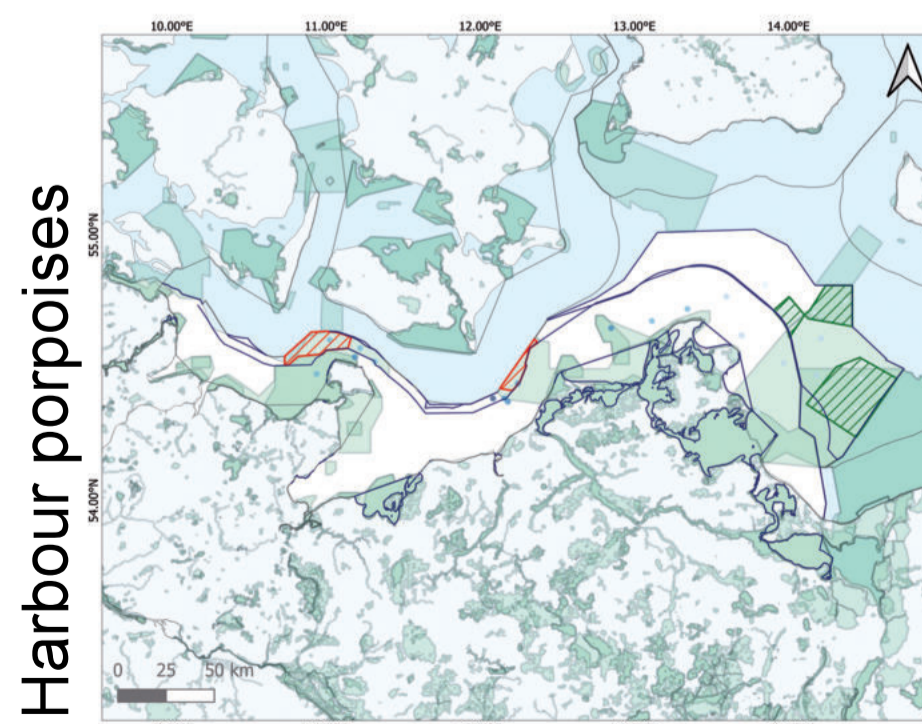
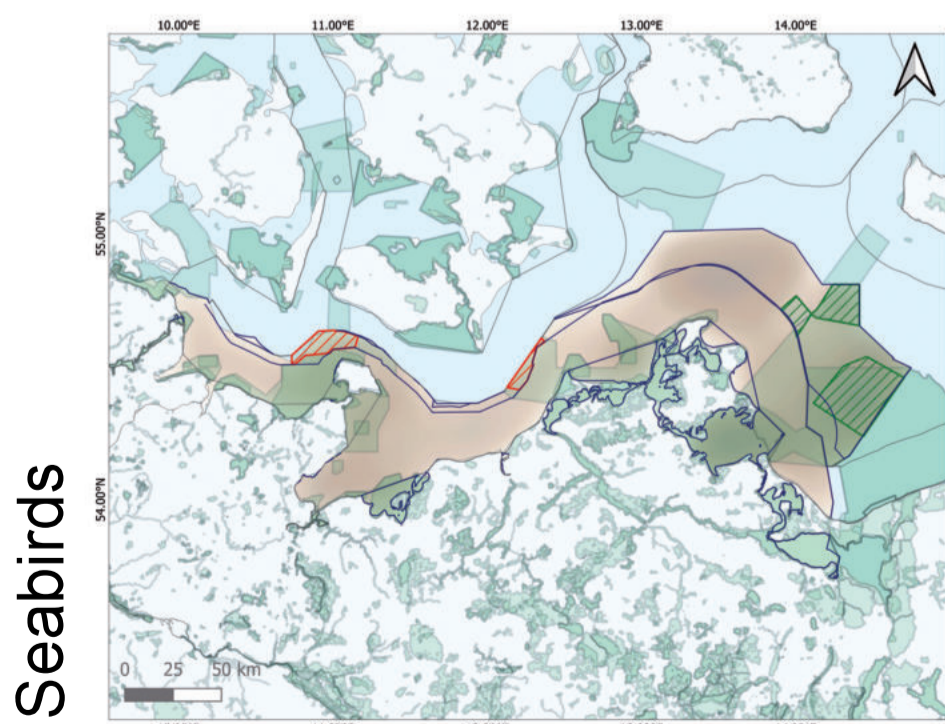
German marine protected areas do by now not protect threatened species and habitats. Fishing, dredging, development of infrastructure projects and shipping is widely taking place - urgent actions are needed to stop biodiversity loss. As scientifically justified NABU calls for 50% strict protection in the designated marine protected areas.



North Sea



Baltic Sea



Founded in 1899, NABU (Nature And Biodiversity Conservation Union) is the oldest and largest environment association in Germany. It encompasses more than 900,000 members and supporters, who commit themselves to the conservation of threatened habitats, flora, and fauna, to climate protection and energy policy.

NABU e.V. - The Nature and Biodiversity Conservation Union | Charitéstraße 3 | 10117 Berlin, Germany