

LIFE Integrated Project
UE LIFE 16 IPE FR001

Improving the implementation of Natura2000 at sea and the conservation status of marine habitats of Community interest

Alain PIBOT

National coordinator of the European LIFE Integrated projet MARHA
Office français de la Biodiversité



1

INITIAL FINDINGS

PROJECT JUSTIFICATION



Starting point, justification and project set-up

The importance of taking action to improve implementation of Natura 2000 at sea

Code	Habitats génériques	Atlantique		Méditerranée	
		2012	2018	2012	2018
1110	Bancs de sable à faible couverture permanente d'eau marine	DM	DM	DM	DI
1120	Herbiers à posidonies (<i>Posidonia oceanica</i>)			DI	DI
1130	Estuaires	DM	DM	DM	DM
1140	Replats boueux ou sableux exondés à marée basse	DI	DI	DM	DM
1150	Lagunes côtières	DI	DI	DM	DI
1160	Grandes criques et baies peu profondes	DM	DM	DM	DM
1170	Récifs	DI	DI	F	F
1180	Structures sous-marines causées par des émissions de gaz	NE	NE		
8330	Grottes marines submergées ou semi-submergées	NE	F	DI	NE



Loss of biodiversity

- Ethical responsibility
- Legal liability



Loss of ecosystem services- Socio-economic responsibility



* Starting point, justification and project set-up

* The importance of taking action to improve implementation of Natura 2000 at sea



FR
MINISTÈRE
DE LA TRANSITION
ÉCOLOGIQUE
ET DE LA COHÉSION
DES TERRITOIRES
*Liberté
égalité
fraternité*



Coordination

Scientific institutes

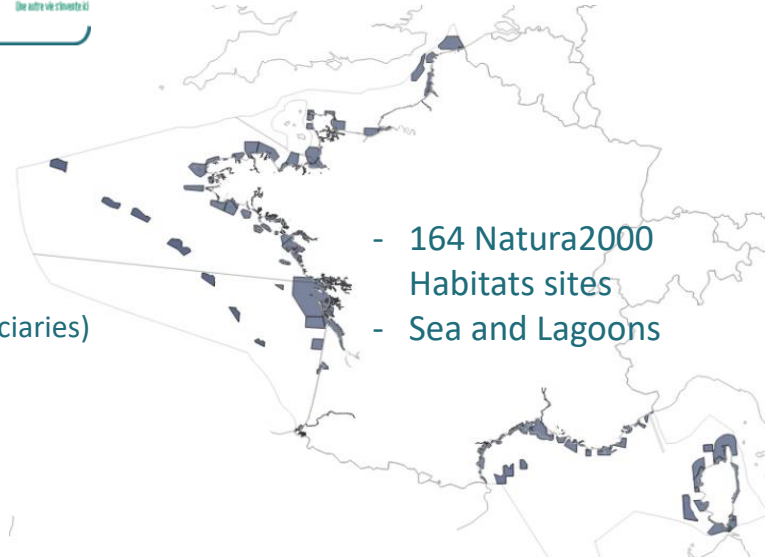
MPA Managers

Objectives

Improve implementation of Natura2000 at sea with a view to restoring a favorable conservation status for benthic habitats of Community interest

Parameters

- 22,3 M€ (UE/Ministry/beneficiaries)
- 8 years – 2018-2025
- 9 benthic habitats
- 6 topics/600 operations



- 164 Natura2000 Habitats sites
- Sea and Lagoons

2

THEMATIC DIAGNOSTICS REVIEW



Thematic diagnostics

Identify dysfunctions and shortcomings

Habitat conservation status assessment



General assessments, drawn up on a biogeographical scale, essentially based on expert opinion (insufficient to detect sources of pressure).



Protocols inherited from WFD (biodiv proxy, no consideration of habitat functionality)



Gaps in knowledge and assessment protocols



Atlantic Maerl



Mediterranean Maerl



Atlantic coastal circa reefs



Deep Reefs

Thematic diagnostics

Identify dysfunctions and shortcomings

Governance



Passive governance

- Steering committees too infrequent to maintain a dynamic of work and reflection
- Top-down information with little participation
- Most impacting decisions taken outside the committees (fishing, shellfish farming, infrastructure, etc.).



Thematic diagnostics

Identify dysfunctions and shortcomings

Site management and administration



Insufficient implementation of the main method for regulating and reducing pressure = Natura 2000 impact assessments

- Lack of training for managers and states services
- Lack of communication between instructors and managers
- Lack of data and tools for management and administrative instruction

Examples of authorized uses not in compliance with Article 6 DHFF/art. L414-4 Fr-CodeEnv



Oyster farm on eelgrass bed



Authorization for traditional anchoring in eelgrass beds



Scallop dredging on maerl

* * * Thematic diagnostics

* * * Identify dysfunctions and shortcomings

Awareness-raising and communication



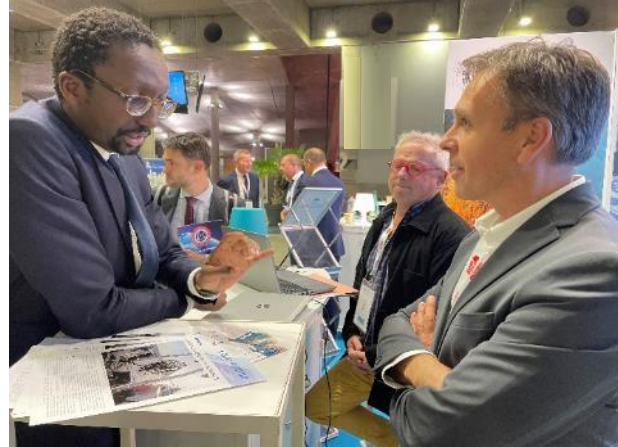
Awareness-raising by untrained managers

- Lack of strategy (objectives, target, message, medium)
- Lack of tools
- Lack of guidelines
- Lack of training for managers



3

CORRECTIVE WORK UNDERTAKEN BY MARHA

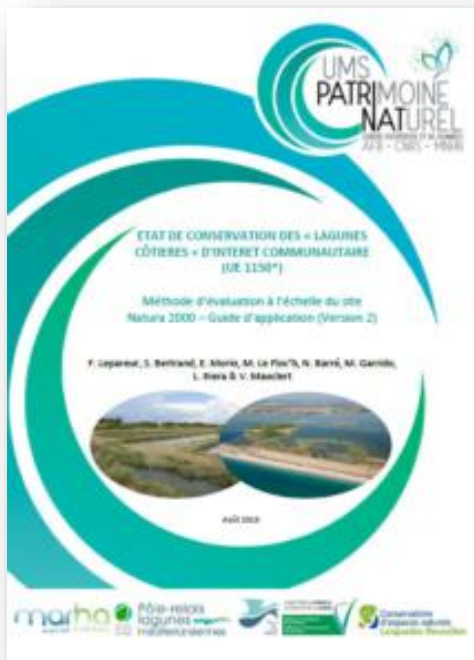


* * * CORRECTIVE WORK UNDERTAKEN

* * * Research, test and deploy solutions

Habitat conservation status assessment

Exploration and development of specific protocols



Training managers in the evaluation method



Implementation of eelgrass monitoring by managers

CORRECTIVE WORK UNDERTAKEN

Research, test and deploy solutions

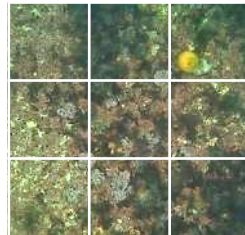
Habitat conservation status assessment

Exploration and development of specific protocols

Deep Reefs



Maerl banks
Circa coastal reefs



Habitat functional health
assessment (EBQI)



Publication of marine habitat
description sheets



* * * CORRECTIVE WORK UNDERTAKEN

* * * Research, test and deploy solutions

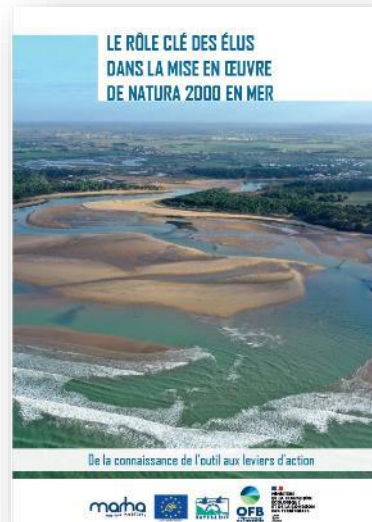
Governance



Leading steering committees and setting up working groups



Note for elected representatives
Note for COPIL members



CORRECTIVE WORK UNDERTAKEN

Research, test and deploy solutions

Site management and administration: tool production

⇒ Drafting of site management documents
= 18 sites management plans drafted

⇒ Production of national thematic guidelines to avoid and reduce impacts



Marine cultures
Professional fishing
Offshore wind farm
Dredging Immersion
Coastline management

CORRECTIVE WORK UNDERTAKEN

Research, test and deploy solutions

Site management and administration: tool production



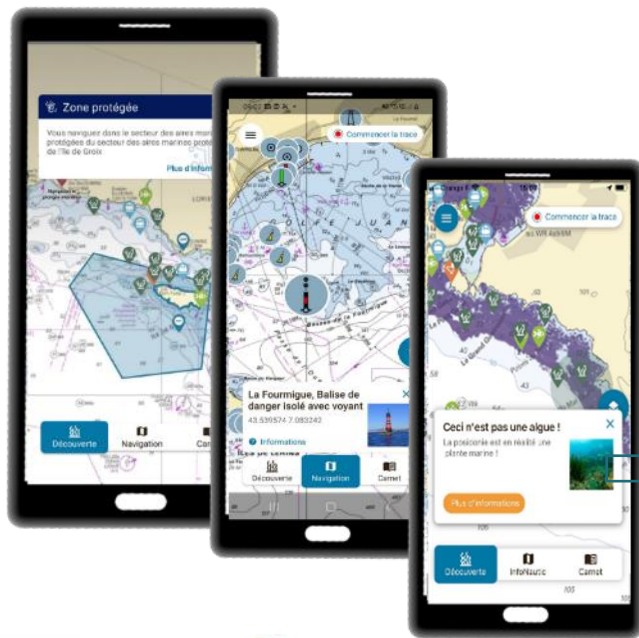
Demonstrative management actions, pressure reduction, habitat restoration and publication of thematic guides (ecological mooring, removal of wrecks, removal of ghost nets, removal of macro-waste, restoration of habitats, etc).



* * * CORRECTIVE WORK UNDERTAKEN

* * * Research, test and deploy solutions

Awareness-raising and communication



Nav&Co

National mobile application for the dissemination of official nautical information



★ CORRECTIVE WORK UNDERTAKEN

★ Research, test and deploy solutions

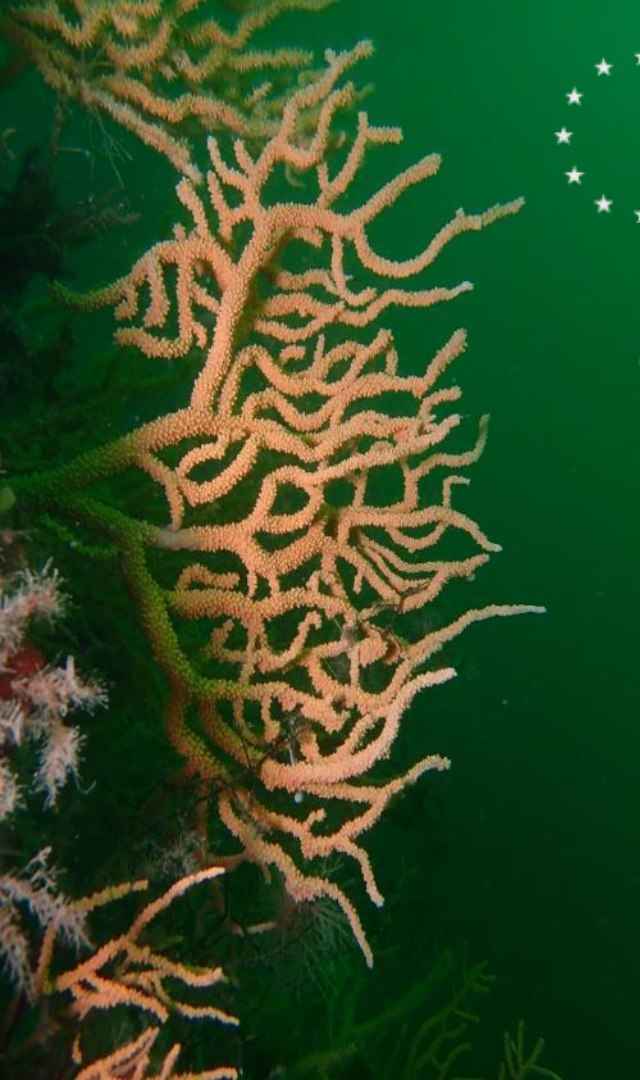


Conclusion

From the ecological impulse to the real politics

1. A trajectory of deterioration difficult to reverse in an unfavorable context (European elections, economic and geopolitical crisis, decline in political ecology)
2. But a favorable social trend (commitment of State services, rise in power of civil society, increase in environmental competence of magistrates, professionalization of managers ...)
3. Very encouraging results





marha
marine habitats

LIFE Integrated Project
UE LIFE 16 IPE FR001

Contact us

alain.pibot@ofb.gouv.fr

<https://www.life-marha.fr/>

<https://www.linkedin.com/groups/13618978/>