



EU Biodiversity Strategy for 2030 - Bringing nature back into our lives

Protected areas target in Bulgaria

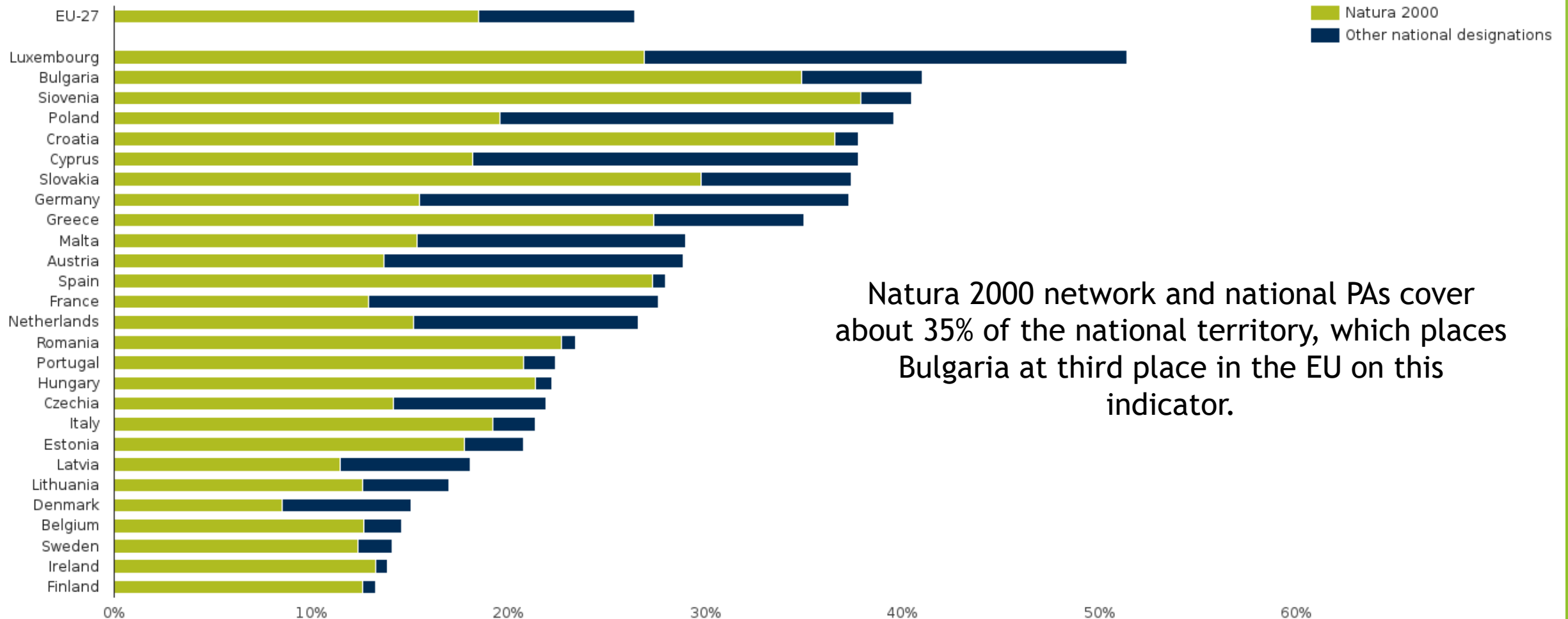
3rd biogeographical seminar for the Mediterranean and Black Sea marine
biogeographical regions

12-14 March 2024, Marseille, France

Lora Dimitrova, Ministry of environment and water

„Natura 2000“ in Europe

Chart — Share of country designated as terrestrial protected area between Natura 2000 and national designations in 2021



Natura 2000 network and national PAs cover about 35% of the national territory, which places Bulgaria at third place in the EU on this indicator.

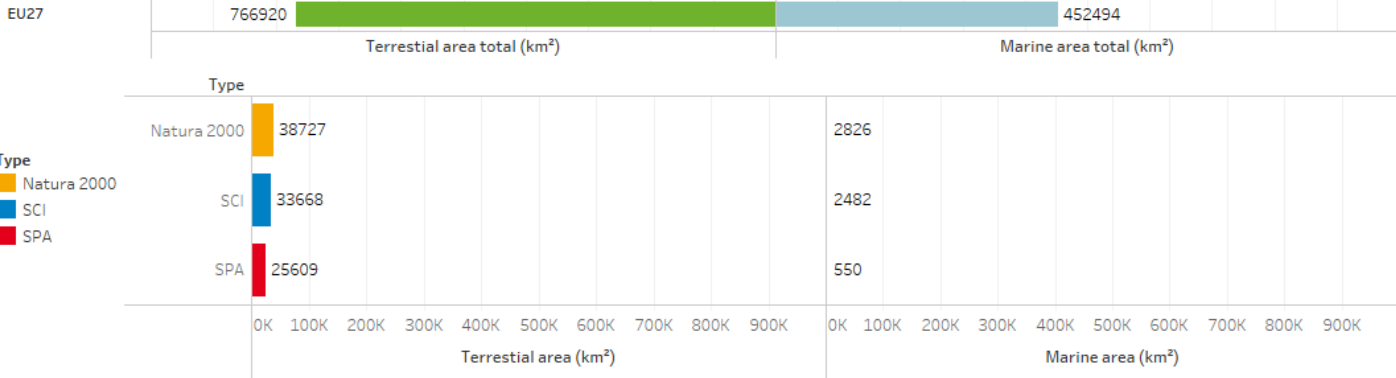
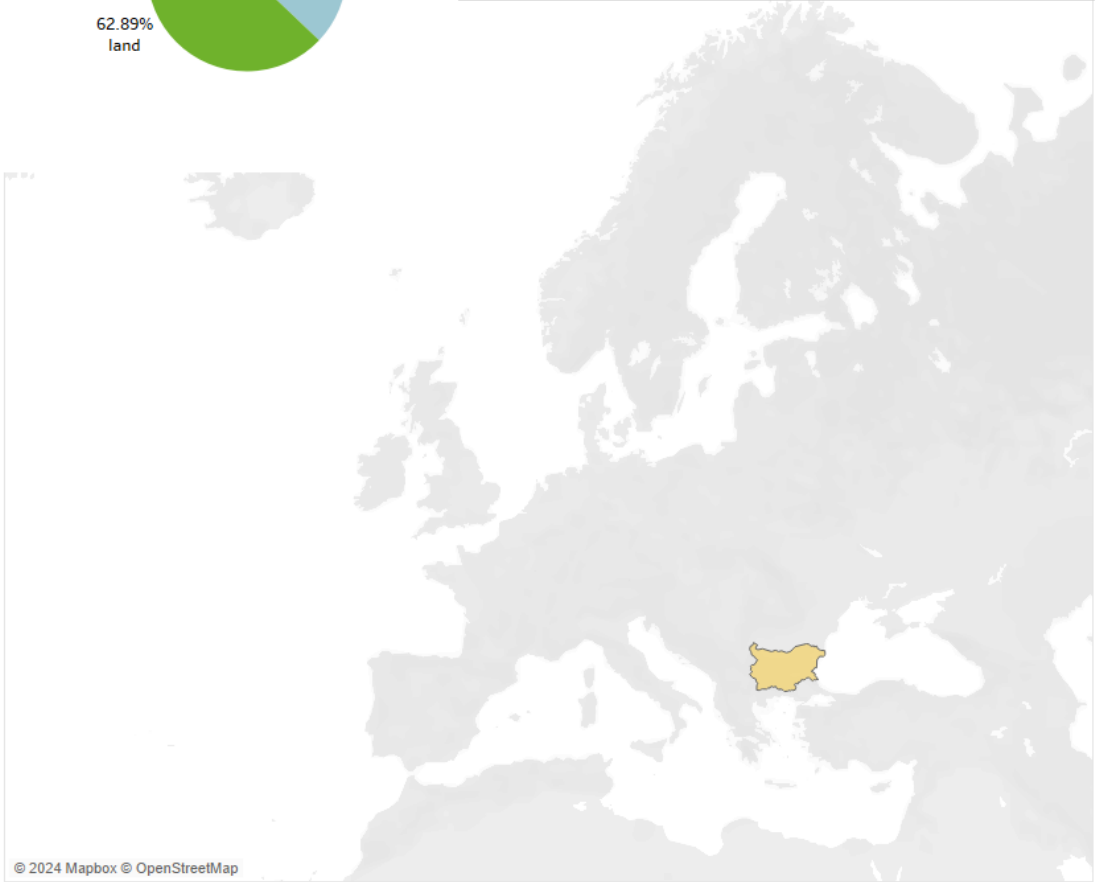
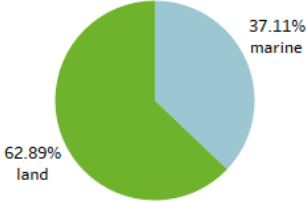
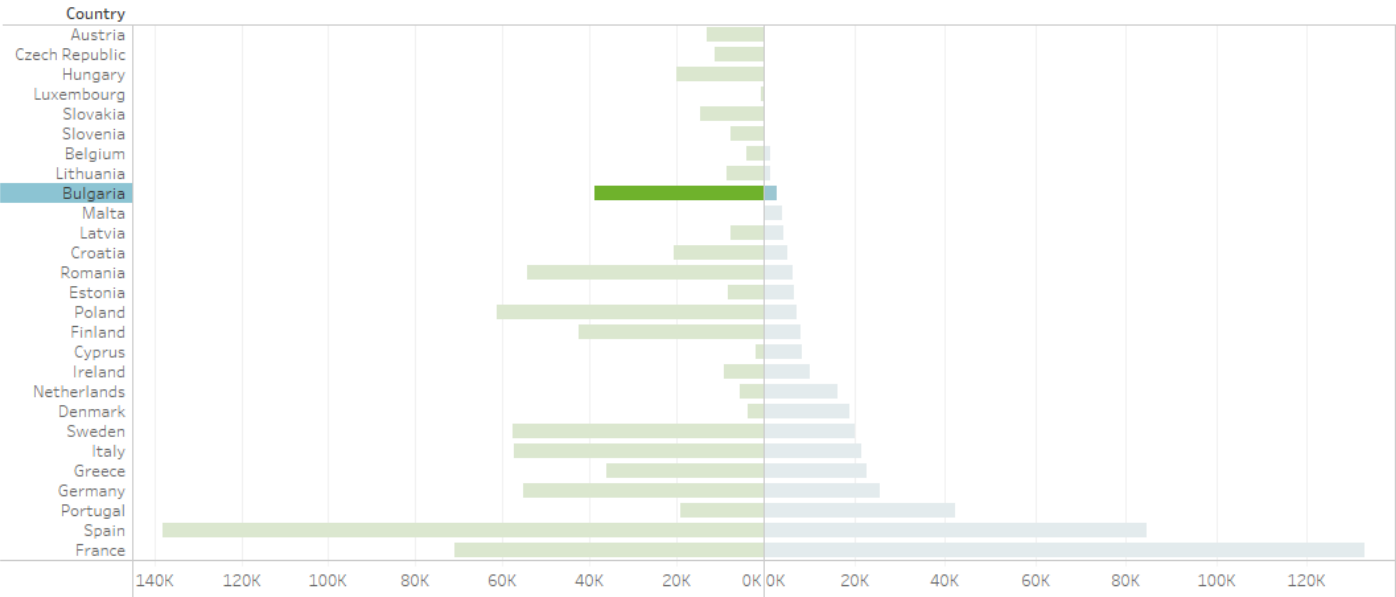
Barometer statistics

Release version
End2021 --- 2022-10-06

Natura 2000 area - All

Natura 2000 marine area (km ²)	2826
Natura 2000 land area (km ²)	38727
EU land area (km ²)	110994
Natura 2000 land area (%)	34.9

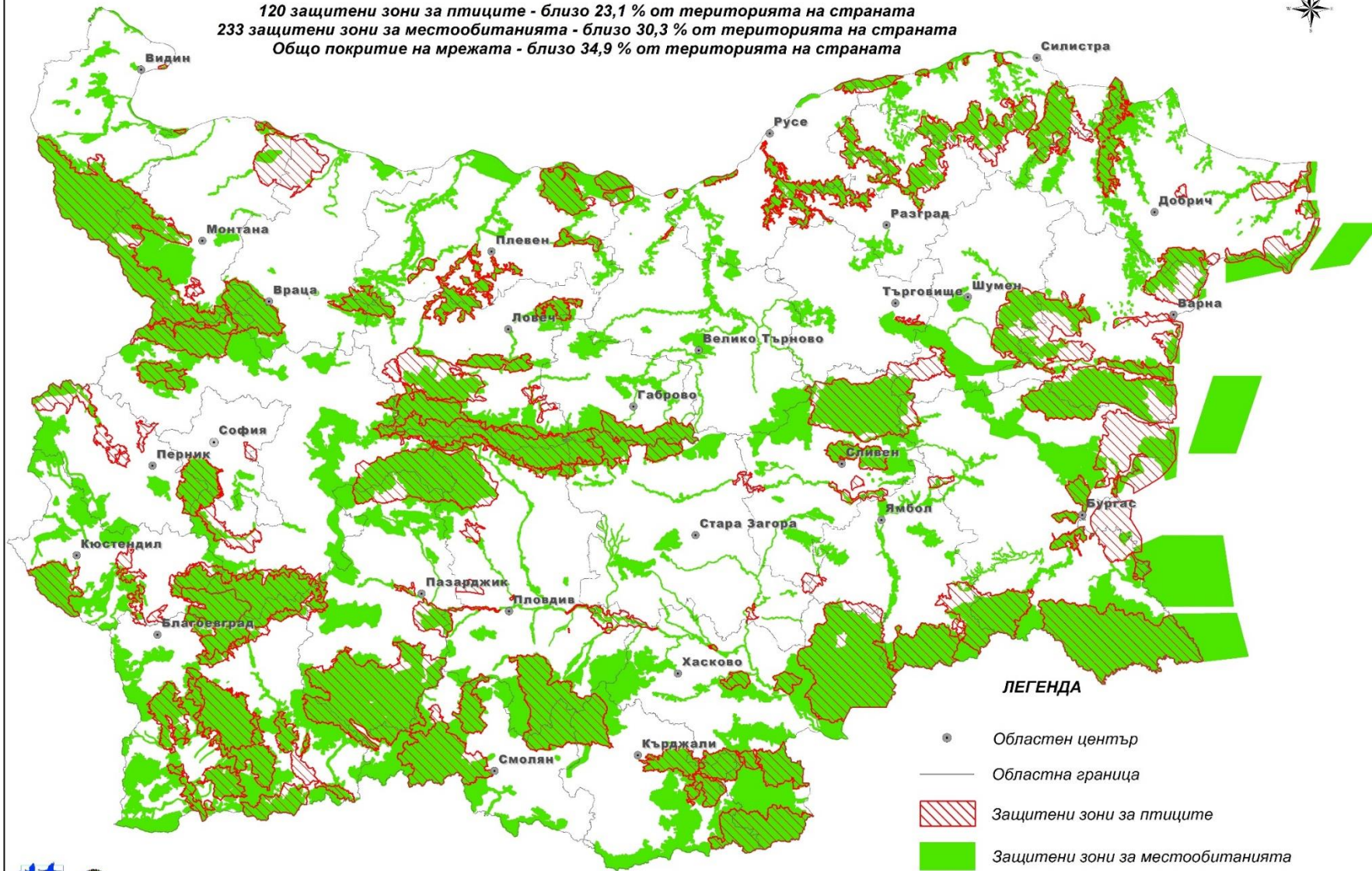
Natura 2000 land and marine area



„Natura 2000“ in Bulgaria

ЗАЩИТЕНИ ЗОНИ (НАТУРА 2000 МЕСТА), ОДОБРЕНИ ОТ МИНИСТЕРСКИ СЪВЕТ Август 2021 г.

120 защитени зони за птиците - близо 23,1 % от територията на страната
233 защитени зони за местообитанията - близо 30,3 % от територията на страната
Общо покритие на мрежата - близо 34,9 % от територията на страната



Our approach

Working group

It includes scientist from the Bulgarian Academy of Sciences and representatives from administrative institutions.

??? Why scientists?

The pledges have to be supported by serious scientific justification.

??? Why different administrative institutions?

The support of the different institutions is needed in order to achieve a correct correspondence of the pledges with the departmental policies.

First step: we are in the process of collecting and analyzing data from all participants.

Next step: determination of the national pledges.

Our approach

- ▶ **Working group** - includes scientist from the Bulgarian Academy of Sciences and representatives from administrative institutions
- ▶ **Public hearing** of the draft of the national pledges.
- ▶ **Council of Ministers approval.**
- ▶ **Submission** of the pledges to the EC.



Protected area target:

Bulgaria has achieved the target of 30% protection of the land, including inland waters thanks to the almost 35% of the Natura 2000 and national protected areas network coverage.

Protected area target

It is a great challenge for Bulgaria to define where are we in the light of the target: 30% protection of the sea of which at least one third (10% of sea) to be under strict protection.

Why this is a challenge for us:

Question: 30% and 10% out of what part of the sea?

1. The Bulgarian Territorial sea (includes the Internal sea waters and then stretches up to 12 nautical miles from the baselines) - about 6 254 km²
2. The Contiguous zone (up to 24 nautical miles from the baselines) - about 4 960 km²
3. The Continental shelf - about 9 933 km²
4. The Exclusive Economic Zone (EEZ) - about 23 819 km², beyond the Contiguous zone. Not enough space to reach up to 200 nm!

If we take into account only 1 + 2 = than Bulgaria already has achieved 25 % cover by Natura 2000 sites (incl. national PAs)

But If we take into account 1 + 2 + 3 = 22 %

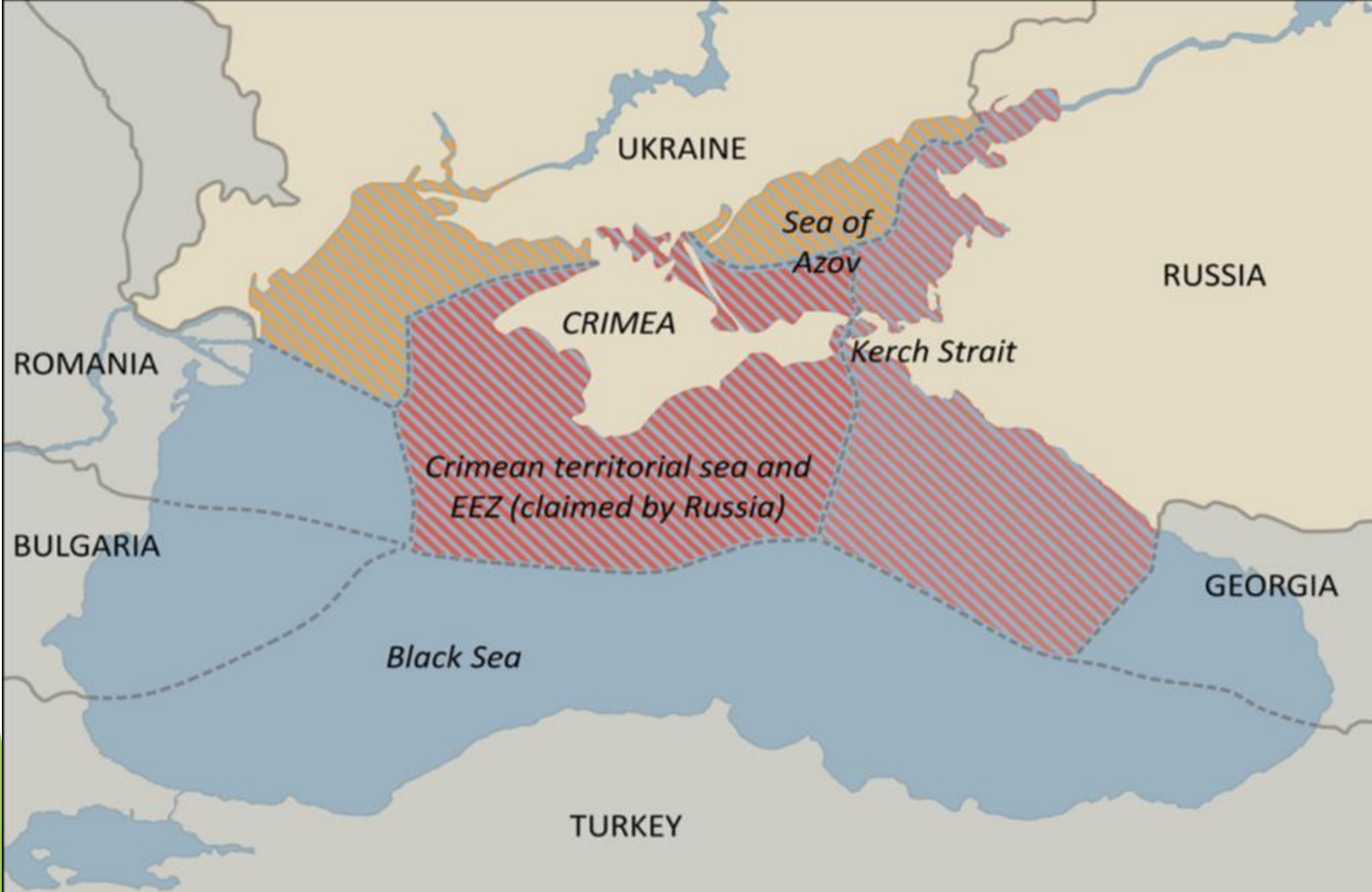
And if we take into account 1 + 2 + 3 + 4 = 8 %

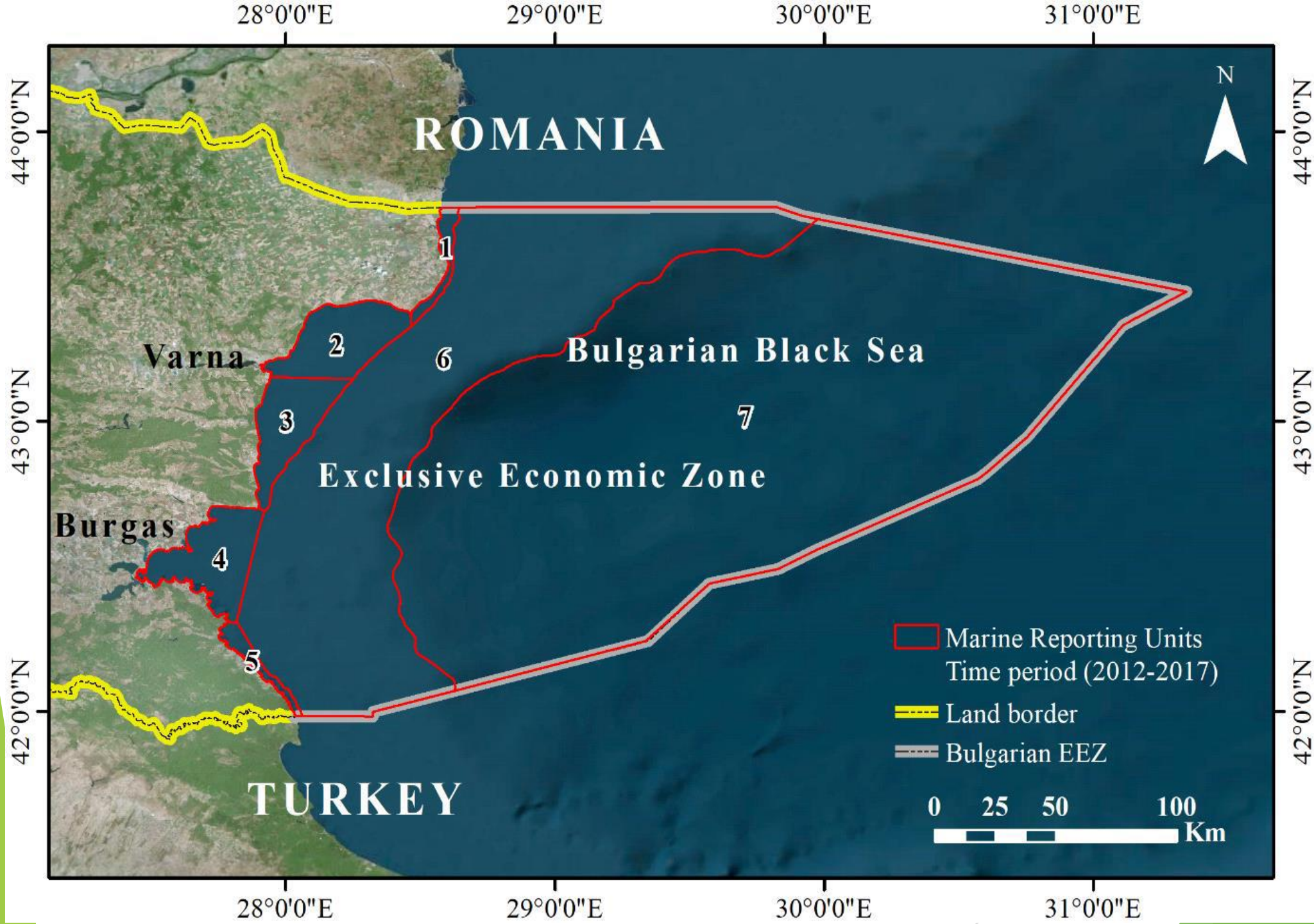
Question: Are the definition for strict protection applicable for the EEZ?

If “YES”, how can we achieve the requirements of art.58 of the United Nations Convention on the Law of the Sea (UNCLOS) that all States shall enjoy the freedom of navigation, the laying of cables and pipelines?

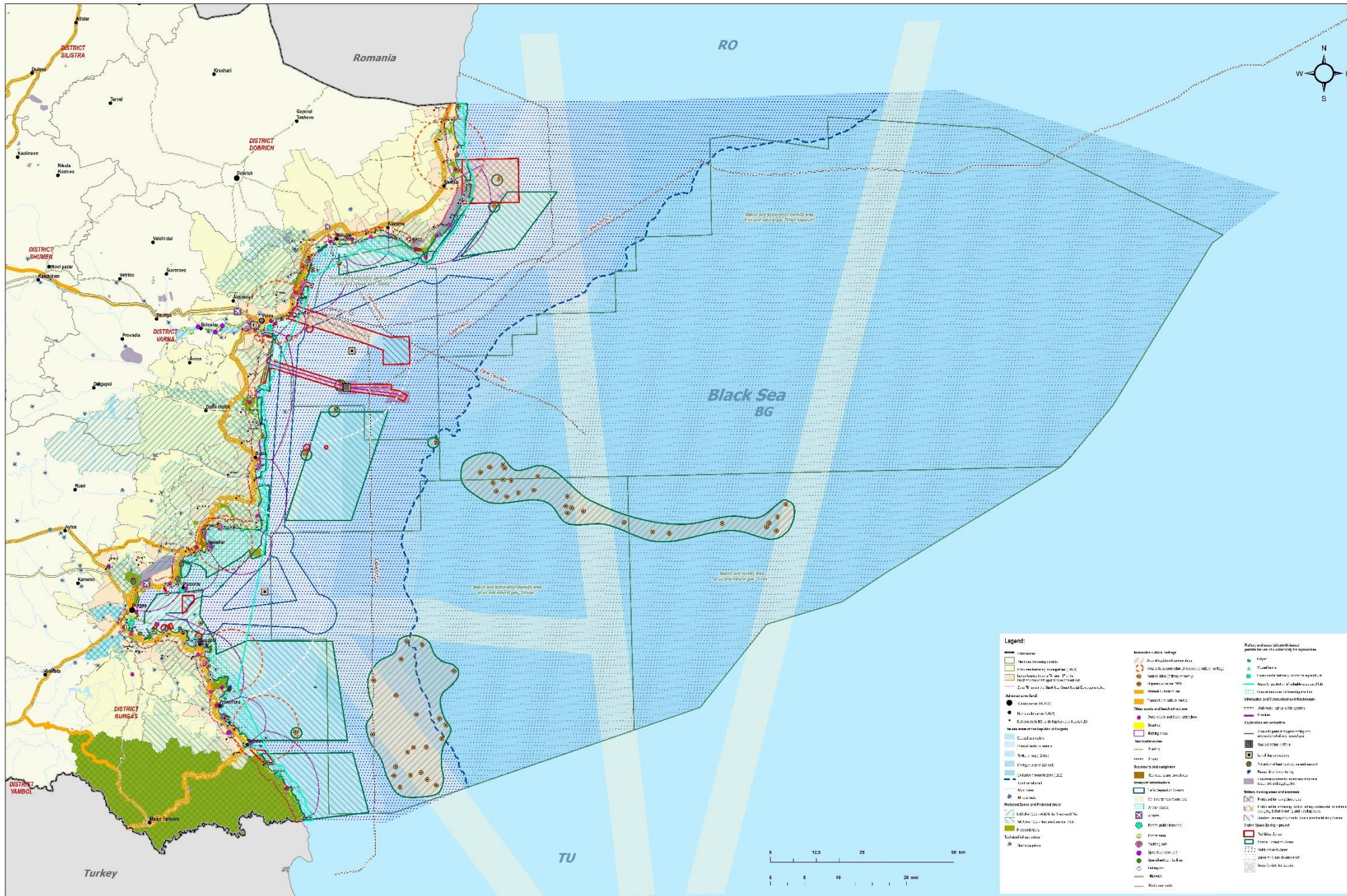
Question: Is it relevant to protect only the first 150m depth and only for cetacean and fishes?

All Member States are expected to contribute towards reaching the strategy targets, to an extent that is proportionate to the natural values they host. There is no oxygen below 150 m depth in the Black sea, only hydrogen sulphide (H₂S).






MARITIME SPATIAL PLAN OF THE REPUBLIC OF BULGARIA 2021 - 2035



Legend:

<ul style="list-style-type: none"> Coastal waters EEZ Continental shelf 12 nm territorial sea 200 nm EEZ Continental shelf Coastal waters Ports Shipping lanes Offshore energy installations Protected areas Maritime infrastructure Ports Shipping lanes Offshore energy installations Protected areas Maritime infrastructure 	<ul style="list-style-type: none"> Ports Shipping lanes Offshore energy installations Protected areas Maritime infrastructure Ports Shipping lanes Offshore energy installations Protected areas Maritime infrastructure 	<ul style="list-style-type: none"> Ports Shipping lanes Offshore energy installations Protected areas Maritime infrastructure Ports Shipping lanes Offshore energy installations Protected areas Maritime infrastructure
--	--	--

A satellite view of the Earth showing the Mediterranean Sea region. The sea is highlighted with a semi-transparent blue overlay. The surrounding landmasses, including Europe, North Africa, and the Middle East, are visible in shades of green and brown, with white clouds scattered across the scene.

Thank you for your attention!

Lora Dimitrova, Ministry of environment and water