



**MINISTÈRE
DE LA TRANSITION
ÉCOLOGIQUE
ET DE LA COHÉSION
DES TERRITOIRES**

*Liberté
Égalité
Fraternité*

DIRECTION DE L'EAU ET DE LA BIODIVERSITÉ
SOUS-DIRECTION ECOSYSTÈMES TERRESTRES

Constantin DE PONTBRIAND **Head of protected areas unit**



PLEDGES REPORTING FOR PROTECTED AREAS

PRESENTATION OUTLINE

GENERAL FRAMEWORK

- France's national strategies
- The concept of "high protection" in the France's strategy for protected areas

THE CURRENT NETWORK OF PROTECTED AREAS IN FRANCE

THE PLEDGE REPORTING FOR PROTECTED AREAS

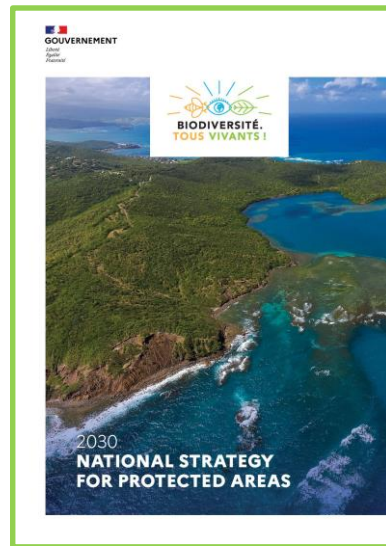
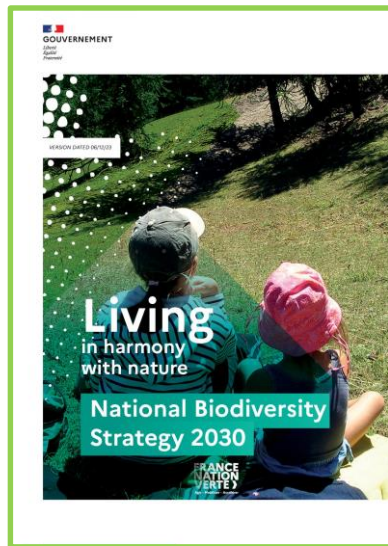
- How did France manage to report?



PLEDGES REPORTING FOR PROTECTED AREAS AND 30% CONSERVATION STATUS IMPROVEMENT TARGETS

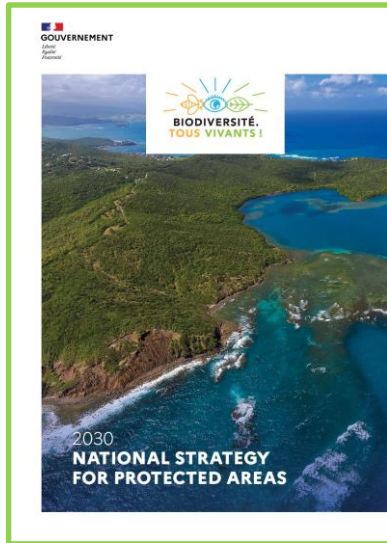
GENERAL FRAMEWORK

FRANCE'S NATIONAL STRATEGIES



GENERAL FRAMEWORK

FRANCE'S NATIONAL STRATEGIE FOR PROTECTED AREAS

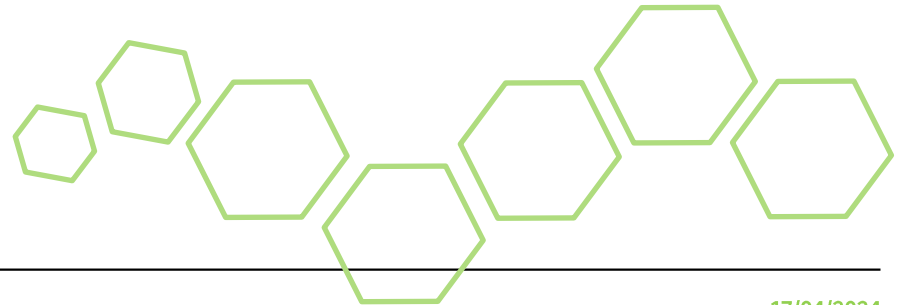


- 01** Develop a network of protected areas resilient to global changes
- 02** Support the implementation of an effective and custom-made management of the protected areas network
- 03** Support sustainable activities in the protected areas network
- 04** Consolidate the integration of the protected areas network into the local setting
- 05** A durable strengthen international cooperation to stem the erosion of biodiversity
- 06** A durable network of protected areas
- 07** Consolidate the role of protected areas in furthering knowledge concerning biodiversity

GENERAL FRAMEWORK

THE "HIGH PROTECTION" IN THE FRANCE'S STRATEGY FOR PROTECTED AREAS

- The environmental law establishes the objective set out in the NSPA of covering 10% of the entire territory (land and sea) as a **highly protected zone**.
- An area under high protection is "*a geographical zone in which the pressures generated by human activities likely to compromise the conservation of ecological issues are absent, avoided, eliminated or mostly limited, and this, in a perennial way, thanks to the implementation of a land protection or an adapted regulation, associated with an effective control of the activities concerned*".



THE CURRENT NETWORK OF PROTECTED AREAS IN FRANCE

	TOTAL AREA	PROTECTED AREAS (target 30%)		HIGH PROTECTION (target 10%)	
		SURFACE (ha)	RATIO (%)	SURFACE (ha)	RATIO (%)
NATIONAL TERRITORY	1 084 952 886 ha	363 291 156 ha	33,5 %	45 972 706 ha	4,2 %
NATIONAL MARINE TERRITORY	1 018 163 492 ha	342 435 865 ha	33,6 %	41 816 884 ha	4,1 %
Mainland	37 589 481 ha	17 146 587 ha	45,6 %	28 349 ha	0,1 %
Overseas	980 574 011 ha	325 289 278 ha	33,2 %	41 788 535 ha	4,3 %
NATIONAL LAND TERRITORY	66 789 394 ha	20 855 291 ha	31,2 %	4 155 822 ha	6,2 %
Mainland	54 886 077 ha	15 415 841 ha	28,1 %	847 300 ha	1,5 %
Overseas	11 903 317 ha	5 439 450 ha	45,7 %	3 308 522 ha	27,8 %

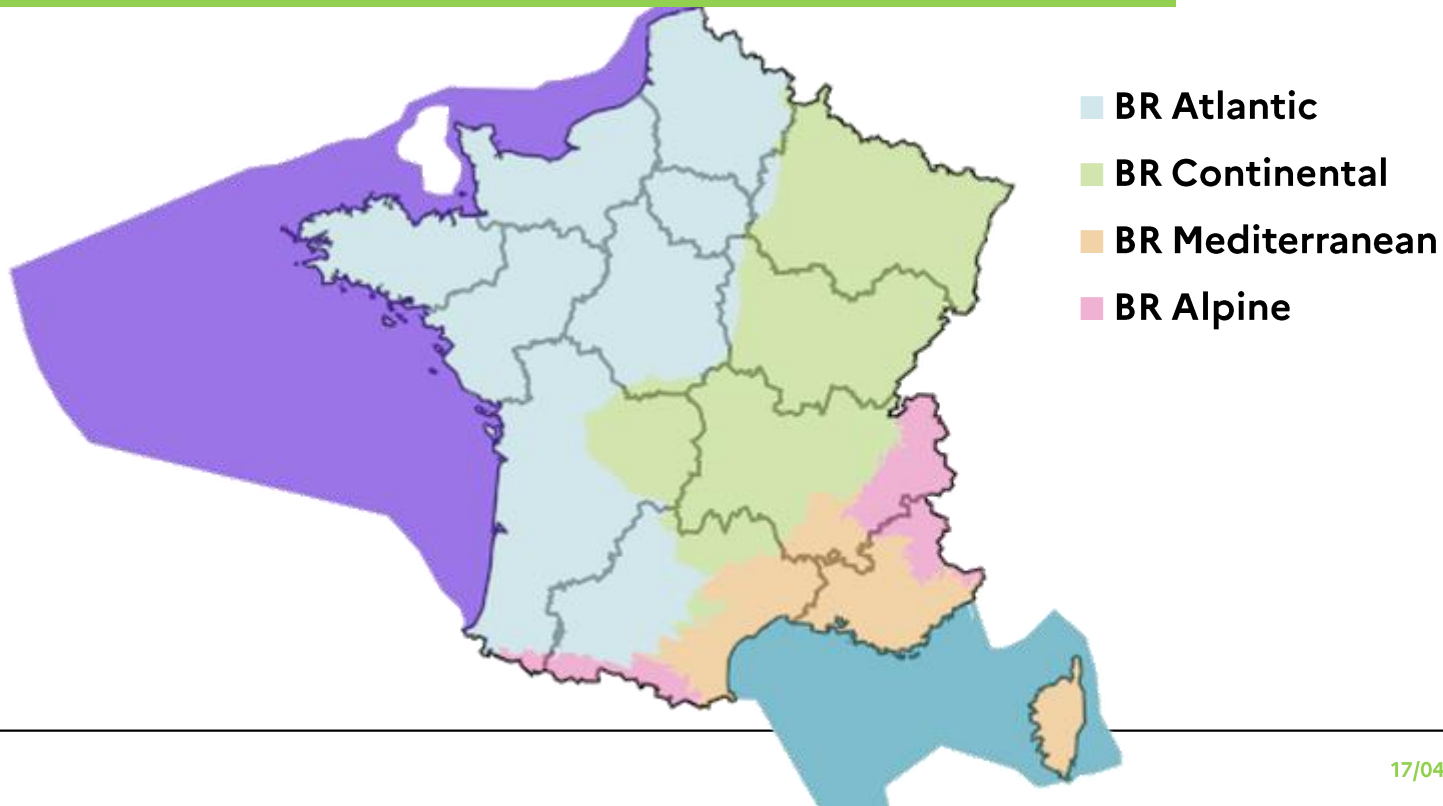
Source : PatriNat et OFB, base Espaces protégés, base Natura 2000, données ZPF marines septembre 2023. Indicateurs de référence 30, 31 et 32 relatifs aux protections contribuant à la SNAP

THE CURRENT NETWORK OF PROTECTED AREAS IN FRANCE

	TOTAL AREA	PROTECTED AREAS (target 30%)		HIGH PROTECTION (target 10%)	
		SURFACE (ha)	RATIO (%)	SURFACE (ha)	RATIO (%)
NATIONAL TERRITORY	1 084 952 886 ha	363 291 156 ha	33,5 %	45 972 706 ha	4,2 %
NATIONAL MARINE TERRITORY	1 018 163 492 ha	342 435 865 ha	33,6 %	41 816 884 ha	4,1 %
Mainland	37 589 481 ha	17 146 587 ha	45,6 %	28 349 ha	0,1 %
Overseas	980 574 011 ha	325 289 278 ha	33,2 %	41 788 535 ha	4,3 %
NATIONAL LAND TERRITORY	66 789 394 ha	20 855 291 ha	31,2 %	4 155 822 ha	6,2 %
Mainland	54 886 077 ha	15 415 841 ha	28,1 %	847 300 ha	1,5 %
Overseas	11 903 317 ha	5 439 450 ha	45,7 %	3 308 522 ha	27,8 %

Source : PatriNat et OFB, base Espaces protégés, base Natura 2000, données ZPF marines septembre 2023. Indicateurs de référence 30, 31 et 32 relatifs aux protections contribuant à la SNAP

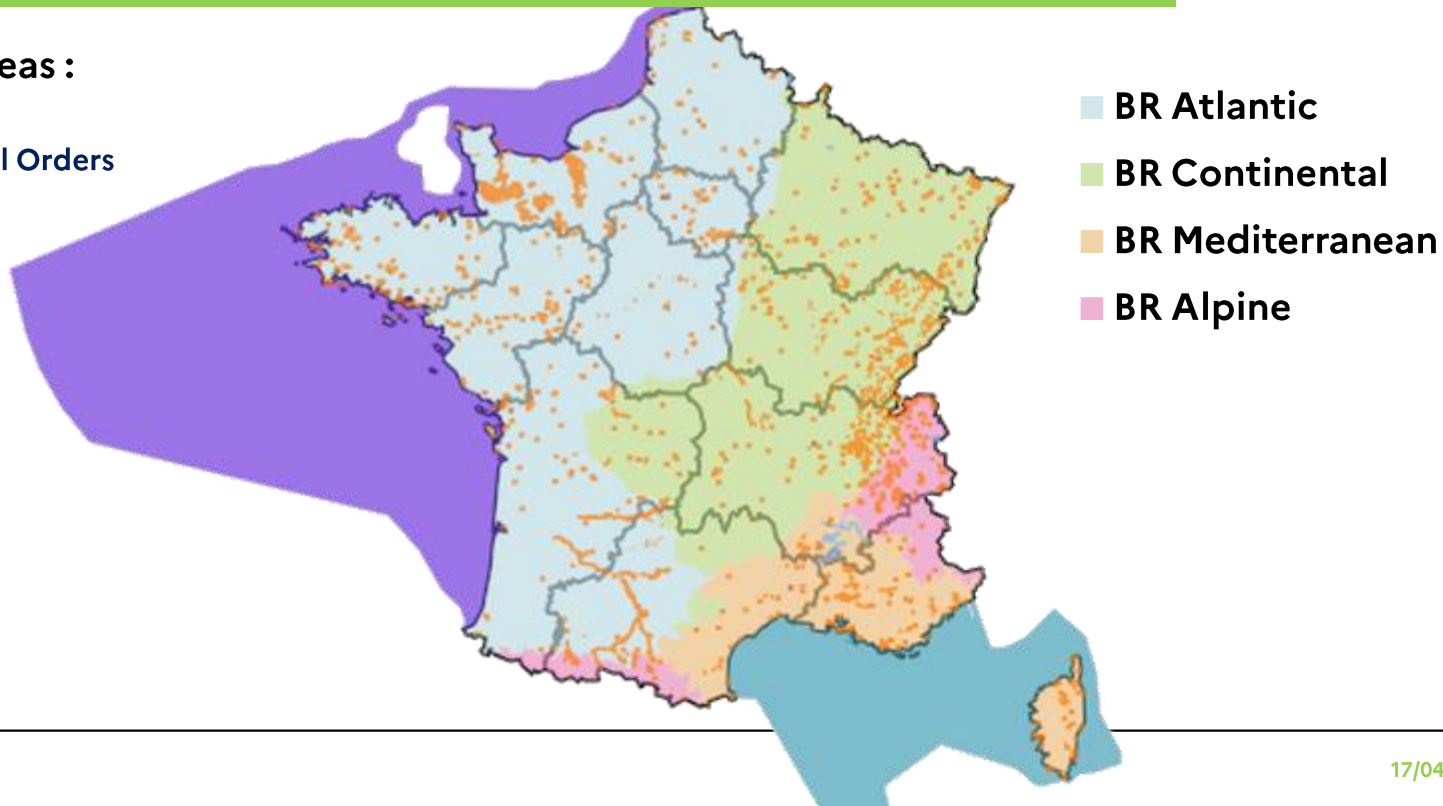
THE CURRENT NETWORK OF PROTECTED AREAS IN FRANCE



THE CURRENT NETWORK OF PROTECTED AREAS IN FRANCE

Protected areas :

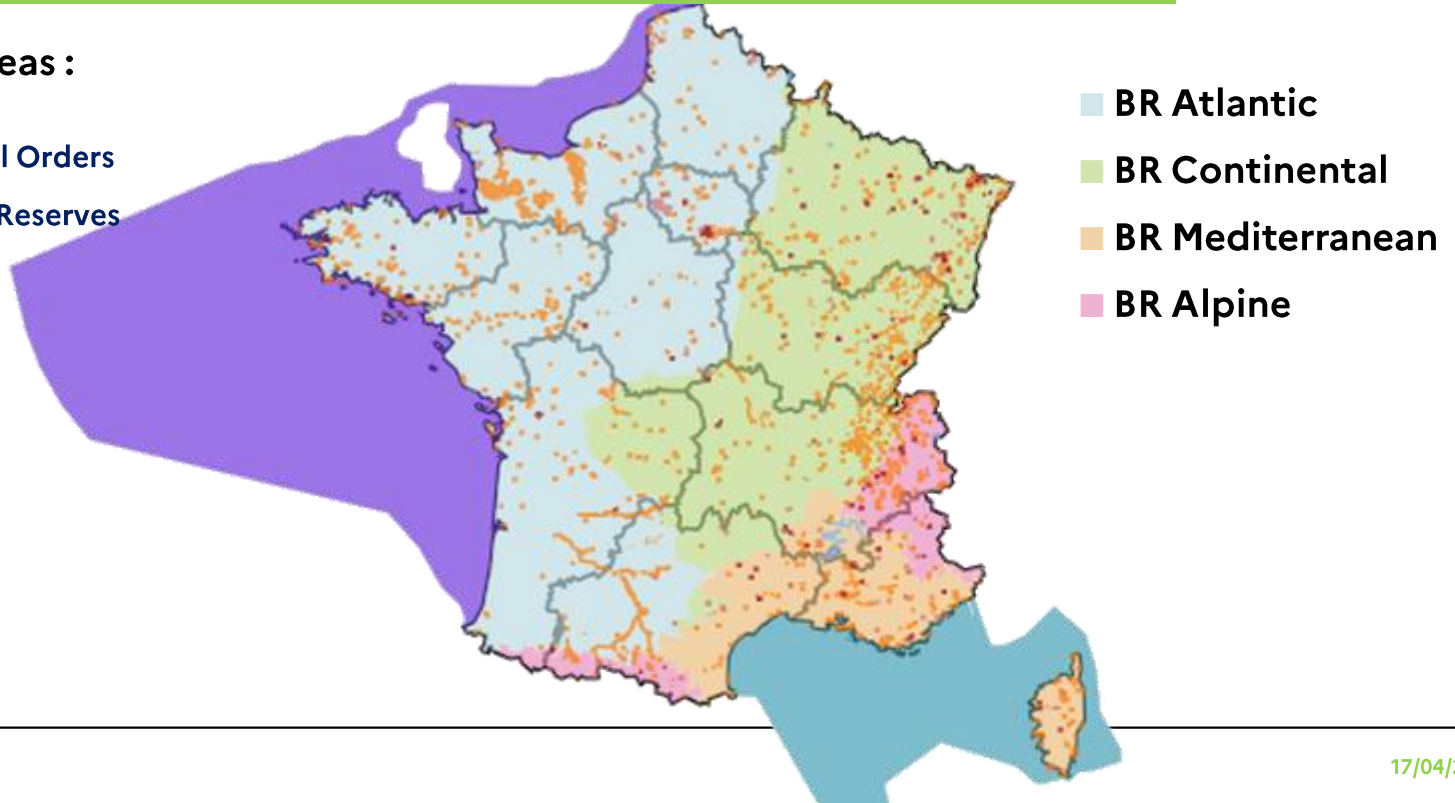
- Prefectoral Orders



THE CURRENT NETWORK OF PROTECTED AREAS IN FRANCE

Protected areas :

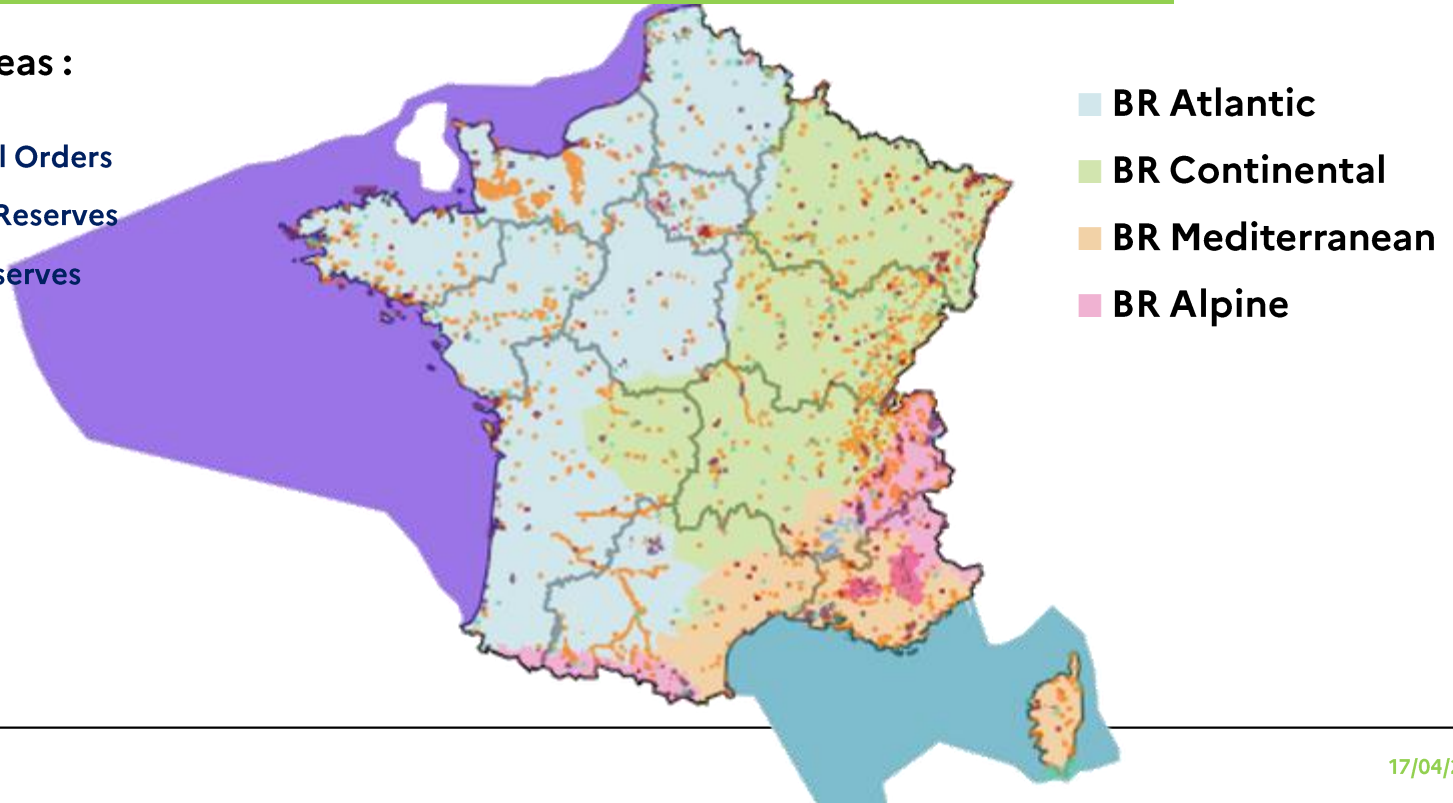
- Prefectoral Orders
- Biological Reserves



THE CURRENT NETWORK OF PROTECTED AREAS IN FRANCE

Protected areas :

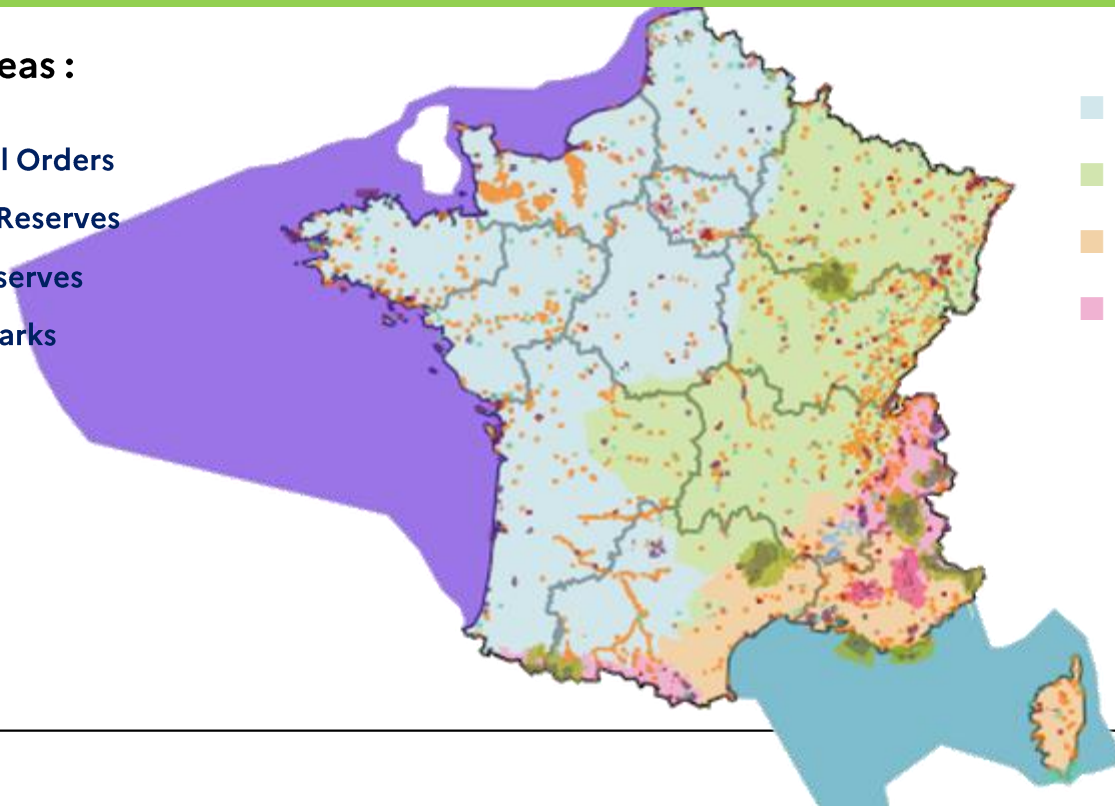
- Prefectoral Orders
- Biological Reserves
- Nature Reserves



THE CURRENT NETWORK OF PROTECTED AREAS IN FRANCE

Protected areas :

- Prefectoral Orders
- Biological Reserves
- Nature Reserves
- National Parks



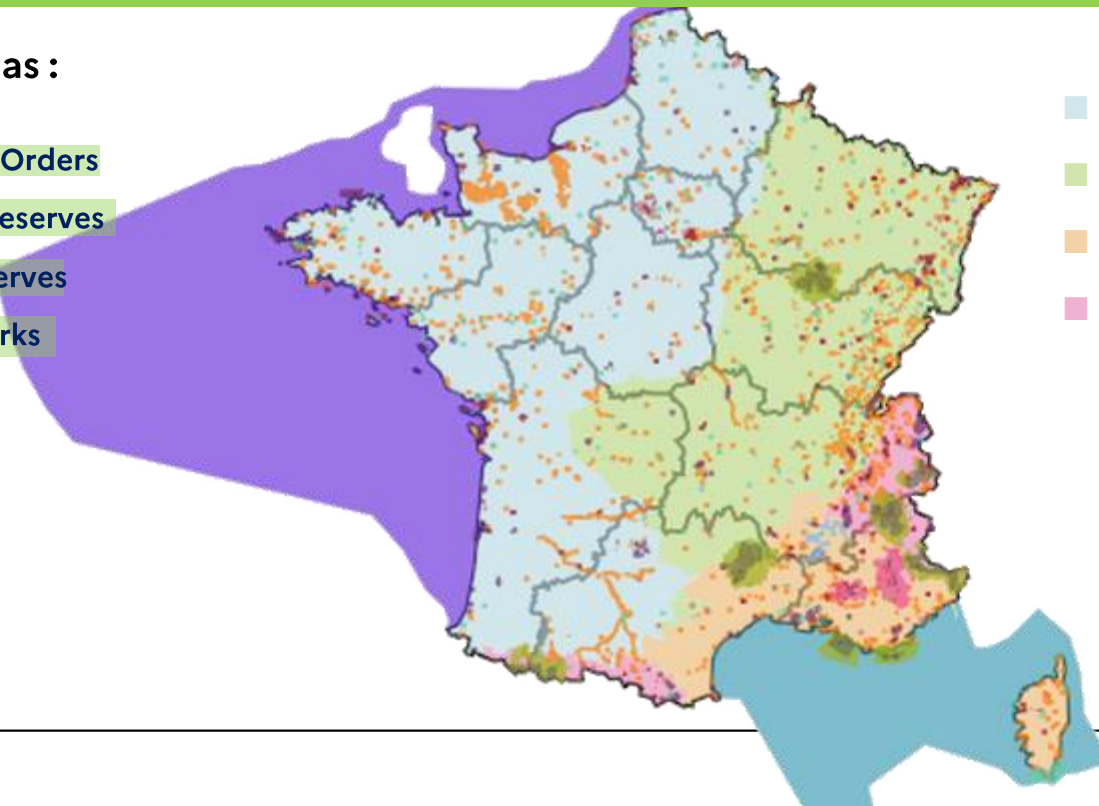
- BR Atlantic
- BR Continental
- BR Mediterranean
- BR Alpine

THE CURRENT NETWORK OF PROTECTED AREAS IN FRANCE

Protected areas :

HP areas

- Prefectoral Orders
- Biological Reserves
- Nature Reserves
- National Parks



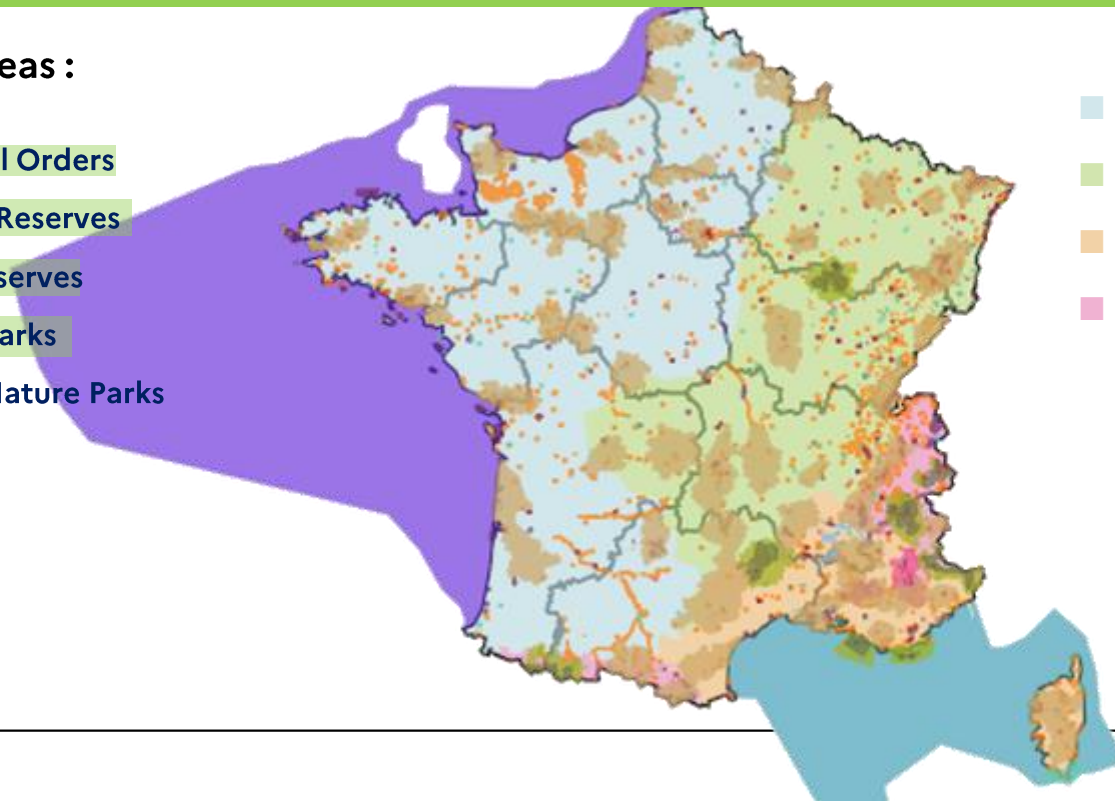
- BR Atlantic
- BR Continental
- BR Mediterranean
- BR Alpine

THE CURRENT NETWORK OF PROTECTED AREAS IN FRANCE

Protected areas :

HP areas

- Prefectoral Orders
- Biological Reserves
- Nature Reserves
- National Parks
- Regional Nature Parks



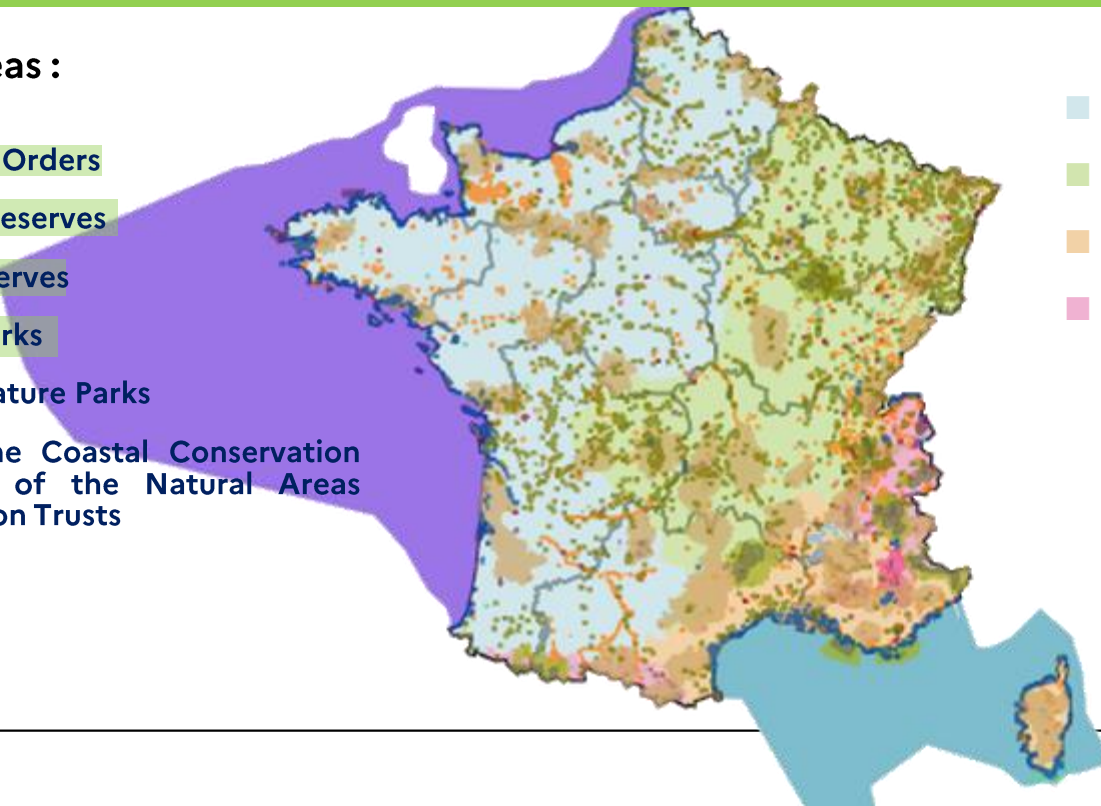
- BR Atlantic
- BR Continental
- BR Mediterranean
- BR Alpine

THE CURRENT NETWORK OF PROTECTED AREAS IN FRANCE

Protected areas :

HP areas

- Prefectoral Orders
- Biological Reserves
- Nature Reserves
- National Parks
- Regional Nature Parks
- Sites of the Coastal Conservation Trust and of the Natural Areas Conservation Trusts



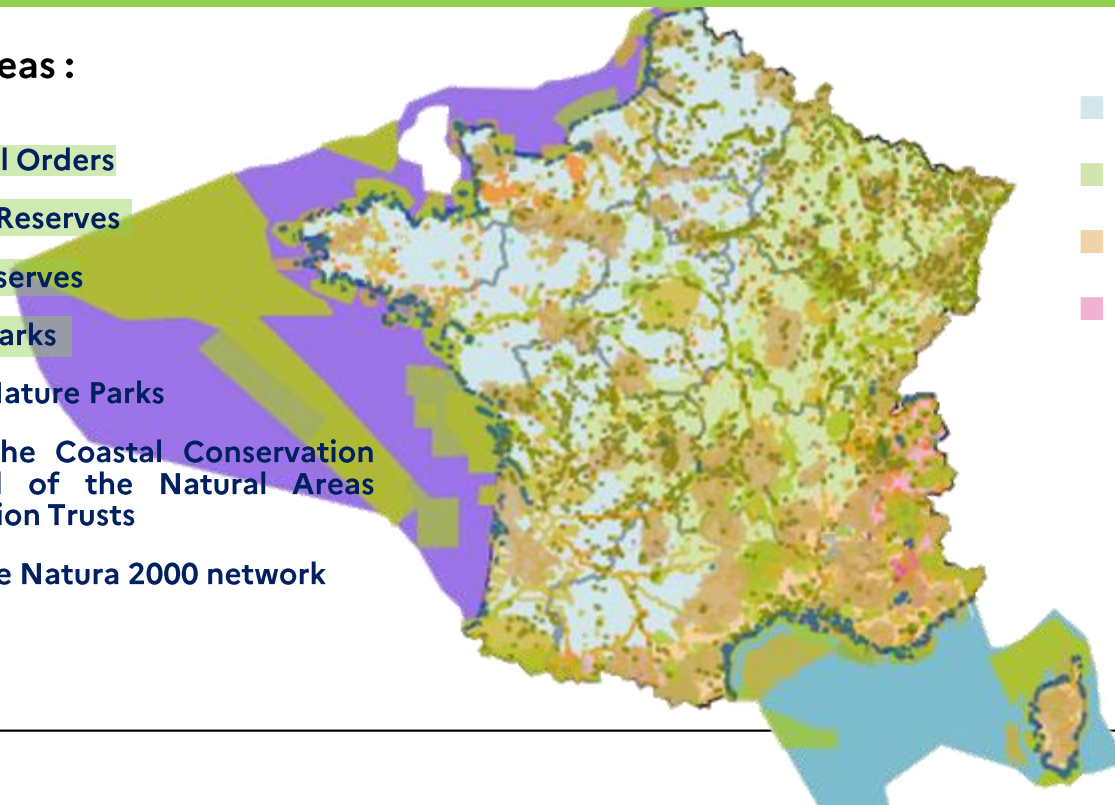
- BR Atlantic
- BR Continental
- BR Mediterranean
- BR Alpine

THE CURRENT NETWORK OF PROTECTED AREAS IN FRANCE

Protected areas :

HP areas

- Prefectoral Orders
- Biological Reserves
- Nature Reserves
- National Parks
- Regional Nature Parks
- Sites of the Coastal Conservation Trust and of the Natural Areas Conservation Trusts
- Sites of the Natura 2000 network



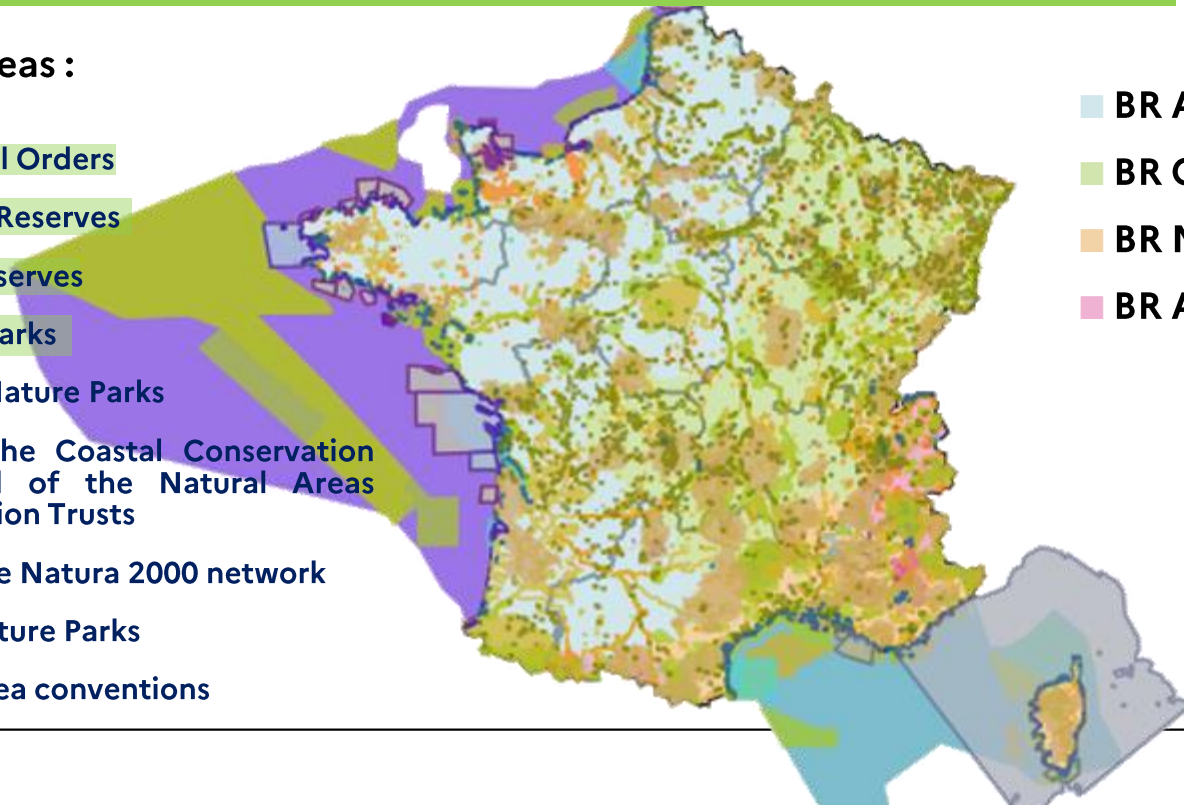
- BR Atlantic
- BR Continental
- BR Mediterranean
- BR Alpine

THE CURRENT NETWORK OF PROTECTED AREAS IN FRANCE

Protected areas :

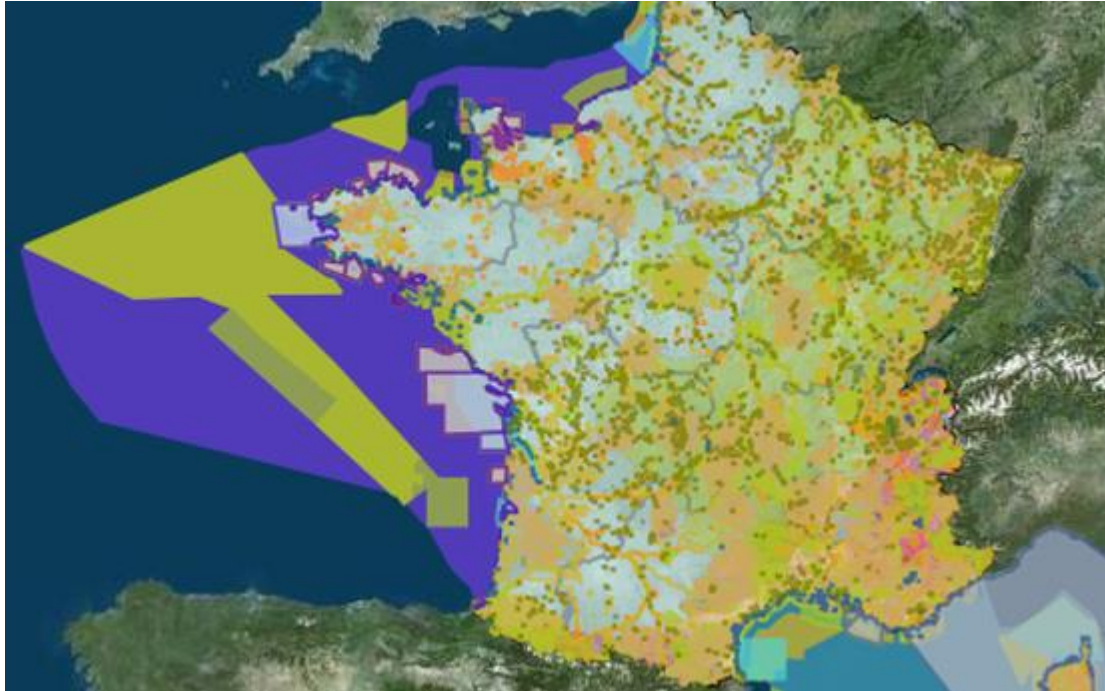
HP areas

- Prefectoral Orders
- Biological Reserves
- Nature Reserves
- National Parks
- Regional Nature Parks
- Sites of the Coastal Conservation Trust and of the Natural Areas Conservation Trusts
- Sites of the Natura 2000 network
- Marine Nature Parks
- Regional sea conventions



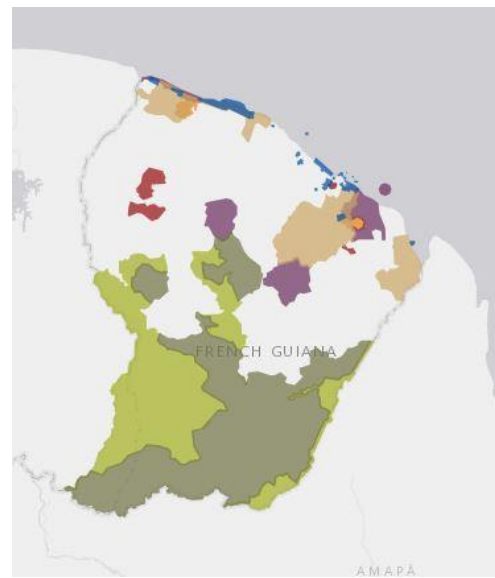
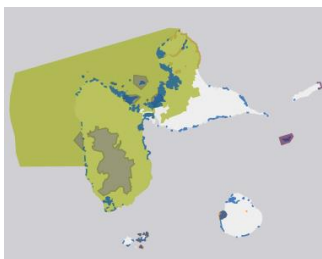
- BR Atlantic
- BR Continental
- BR Mediterranean
- BR Alpine

THE CURRENT NETWORK OF PROTECTED AREAS IN FRANCE



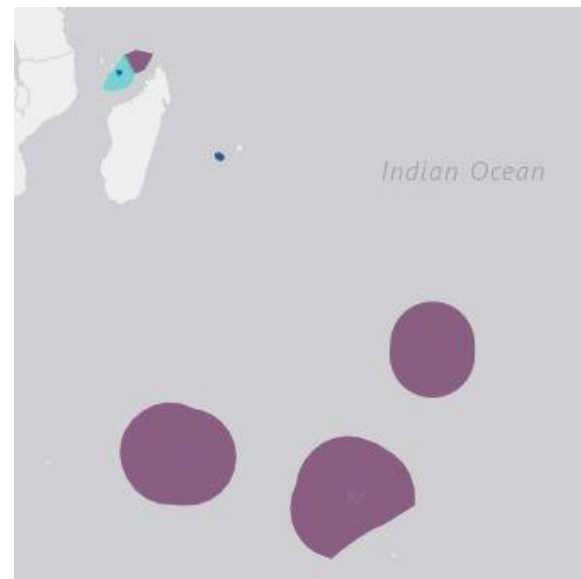
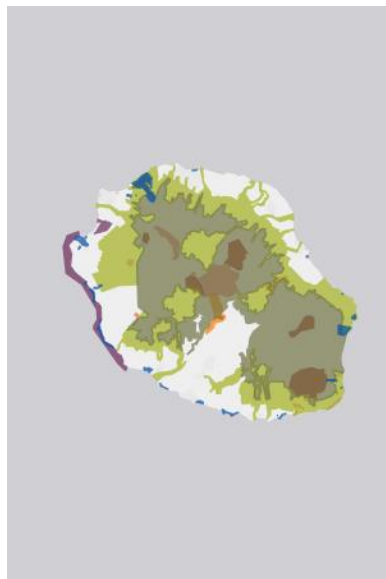
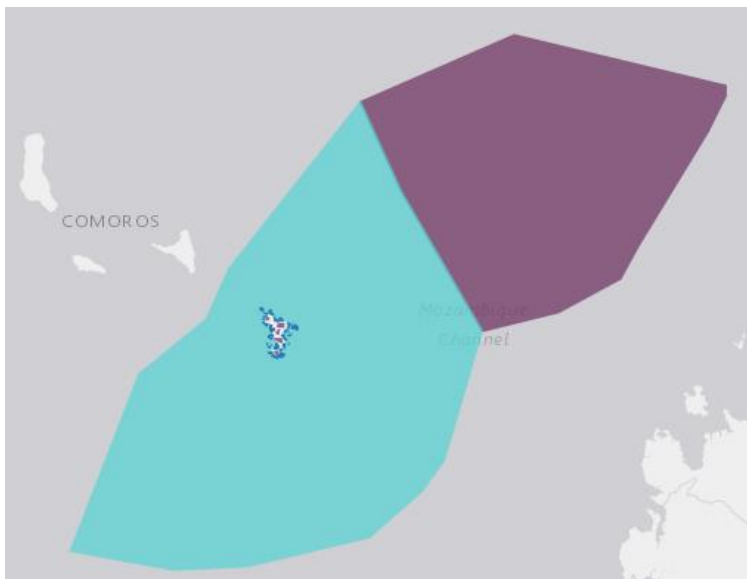
THE CURRENT NETWORK OF PROTECTED AREAS IN FRANCE

FRENCH WEST INDIES AND FRENCH GUIANA



THE CURRENT NETWORK OF PROTECTED AREAS IN FRANCE

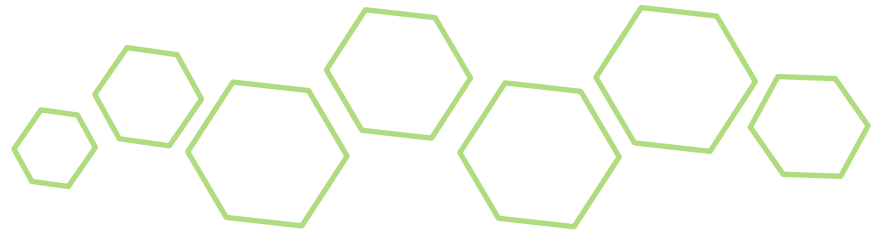
MAYOTTE, REUNION AND THE SOUTHERN INDIAN OCEAN



THE PLEDGE REPORTING FOR PROTECTED AREAS

HOW DID FRANCE MANAGE TO SUBMIT PLEDGES?

- non-exhaustive reporting based on available information only
- reporting of areas under high protection (no identification of "strict" protection)
- no reporting has been carried out on the protected areas and high protection projects to which France is committed by 2030, as the data is not yet sufficiently stable
- difficulty with certain protected areas that are recognized as high protection tools but are not systematically effectively managed
- overseas : outermost regions of the EU



THE PLEDGE REPORTING FOR PROTECTED AREAS

HOW DID FRANCE MANAGE TO SUBMIT PLEDGES?



THE PLEDGE REPORTING FOR PROTECTED AREAS

HOW DID FRANCE MANAGE TO SUBMIT PLEDGES?

- Table 1.1 Protected area per biogeographical region
- Table 1.3 Area under strict protection per biogeographical region
- Table 1.4 Explanation on coherence of the network
- Table 2.1 Existing PA reported in CDDA, which should be counted for the 30% PA target (per designation type)
- Table 4.1 Strict protection - Areas reported in the CDDA that should be counted towards the 10% target (per designation type)

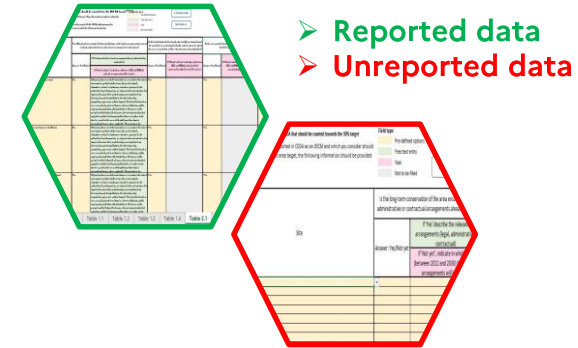


PLEDGES REPORTING FOR PROTECTED AREAS AND 30% CONSERVATION STATUS IMPROVEMENT TARGETS

THE PLEDGE REPORTING FOR PROTECTED AREAS

HOW DID FRANCE MANAGE TO SUBMIT PLEDGES?

- Table 1.1 Protected area per biogeographical region
- Table 1.2 OECM area per biogeographical region
- Table 1.3 Area under strict protection per biogeographical region
- Table 1.4 Explanation on coherence of the network
- Table 2.1 Existing PA reported in CDDA, which should be counted for the 30% PA target (per designation type)
- Table 2.2 Existing PA reported in CDDA, which should be counting for the 30% PA target – individual sites
- Table 3 OECMs already reported in the CDDA that should be counted towards the 30% target
- Table 4.1 Strict protection - Areas reported in the CDDA that should be counted towards the 10% target (per designation type)
- Table 4.2 Strict protection – Natura2000 sites or areas reported in the CDDA that should be counted towards the 10% target – individual sites
- Table 5 Pledges for future protected areas or OECMs

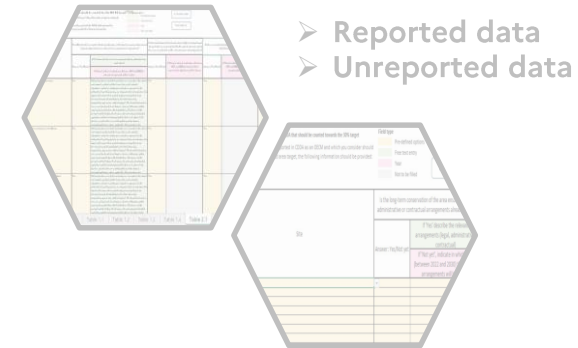


PLEDGES REPORTING FOR PROTECTED AREAS AND 30% CONSERVATION STATUS IMPROVEMENT TARGETS

THE PLEDGE REPORTING FOR PROTECTED AREAS

HOW DID FRANCE MANAGE TO SUBMIT PLEDGES?

- Table 1.1 Protected area per biogeographical region
- Table 1.2 OECM area per biogeographical region
- Table 1.3 Area under strict protection per biogeographical region
- **Table 1.4 Explanation on coherence of the network**
- Table 2.1 Existing PA reported in CDDA, which should be counted for the 30% PA target (per designation type)
- Table 2.2 Existing PA reported in CDDA, which should be counting for the 30% PA target – individual sites
- Table 3 OECMs already reported in the CDDA that should be counted towards the 30% target
- Table 4.1 Strict protection - Areas reported in the CDDA that should be counted towards the 10% target (per designation type)
- Table 4.2 Strict protection – Natura2000 sites or areas reported in the CDDA that should be counted towards the 10% target – individual sites
- Table 5 Pledges for future protected areas or OECMs



THE PLEDGE REPORTING FOR PROTECTED AREAS

HOW DID FRANCE MANAGE TO SUBMIT PLEDGES?

➤ Table 1.4 Explanation on coherence of the network

The National Strategy for Protected Areas 2030 (NSPA) is France's roadmap for protected areas, including those under high protection. NSPA defines a protected area as *"a clearly defined geographical space, recognised, dedicated and managed, by any effective means, legal or otherwise, to ensure the long-term conservation of nature and its associated ecosystem services and cultural values"* (IUCN definition).

A national decree defines the high protection zone as *"a geographical area in which the pressures generated by human activities likely to compromise the conservation of ecological issues are absent, avoided, eliminated or significantly limited, in a permanent manner, through the implementation of land protection or appropriate regulations, combined with effective control of the activities concerned"*. For its operational implementation, the NSPA relies on three-year action plans at national level and at regional level. Based on a diagnosis of the ecological challenges, pressures and gaps in the existing network of protected areas, these plans identify protected area projects, including those under high protection, to which France is committed by 2030. To date, France has not officially recognised the OECMs. However, work has been initiated to define criteria for the recognition of these tools.

ONLINE RESOURCES

PROTECTED AREAS DATABASE

- What is a protected area? <https://inpn.mnhn.fr/programme/espaces-proteges/presentation>
- Protected Areas viewer : <https://inpn.mnhn.fr/viewer-carto/espaces/>
- Protected areas indicators : <https://inpn.mnhn.fr/snap>

FRANCE'S NATIONAL STRATEGIES

- National strategy for biodiversity (NSB)
<https://www.ecologie.gouv.fr/sites/default/files/National-Biodiversity-Strategy-2030.pdf>
- National strategy for protected areas (NSPA)
<https://www.ecologie.gouv.fr/sites/default/files/2030%20NATIONAL%20STRATEGY%20FOR%20PROTECTED%20AREAS.pdf>
- NSPA national action plan
<https://www.ecologie.gouv.fr/sites/default/files/ACTION%20PLAN%202021-2023%202030%20NATIONAL%20STRATEGY%20FOR%20PROTECTED%20AREAS.pdf>

