

Implementing the EU Biodiversity Strategy Pledges and approach in Italy to protected areas targets

4th Natura 2000 Biogeographical Seminar for the Mediterranean region
17 – 19 April 2024
Larnaca, Cyprus

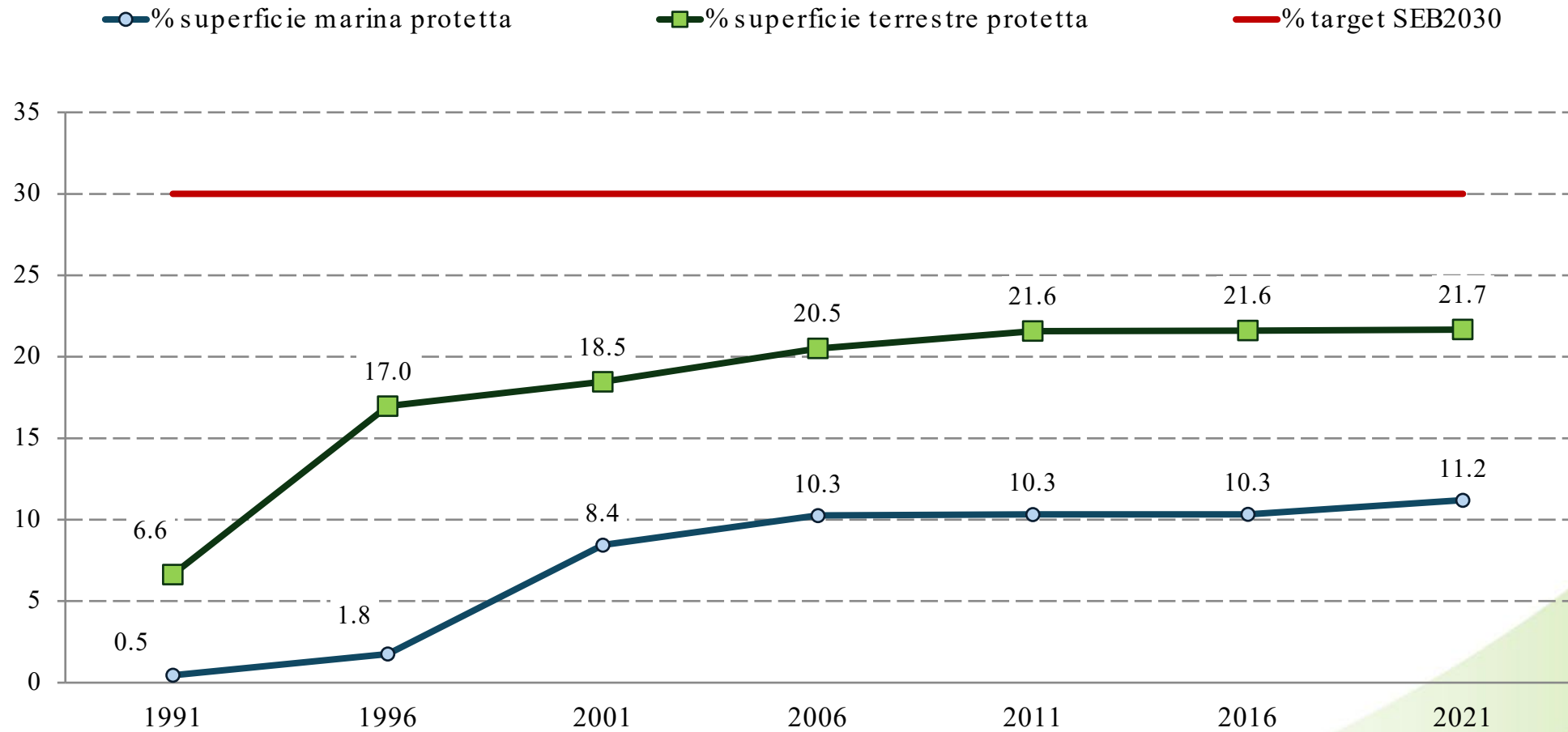


Protected areas targets of the EU Biodiversity Strategy to 2030: at least 30% of protected national territory of which 10% are strictly protected

No official pledges submitted by Italy on this target but an evaluation process is underway with the regional administrations on the areas to be included in the protected and strictly protected territory for the SEB 2030 targets:

- **Target 30%:** new areas have been identified to be included in the national list of protected areas, that will be included in the CDDA
- **Target 10%:** an assessment is underway on the compatibility of the level of protection provided for by national legislation for protected areas with the criteria that will be defined at European level for this type of area
- **OECMs:** they are still under evaluation

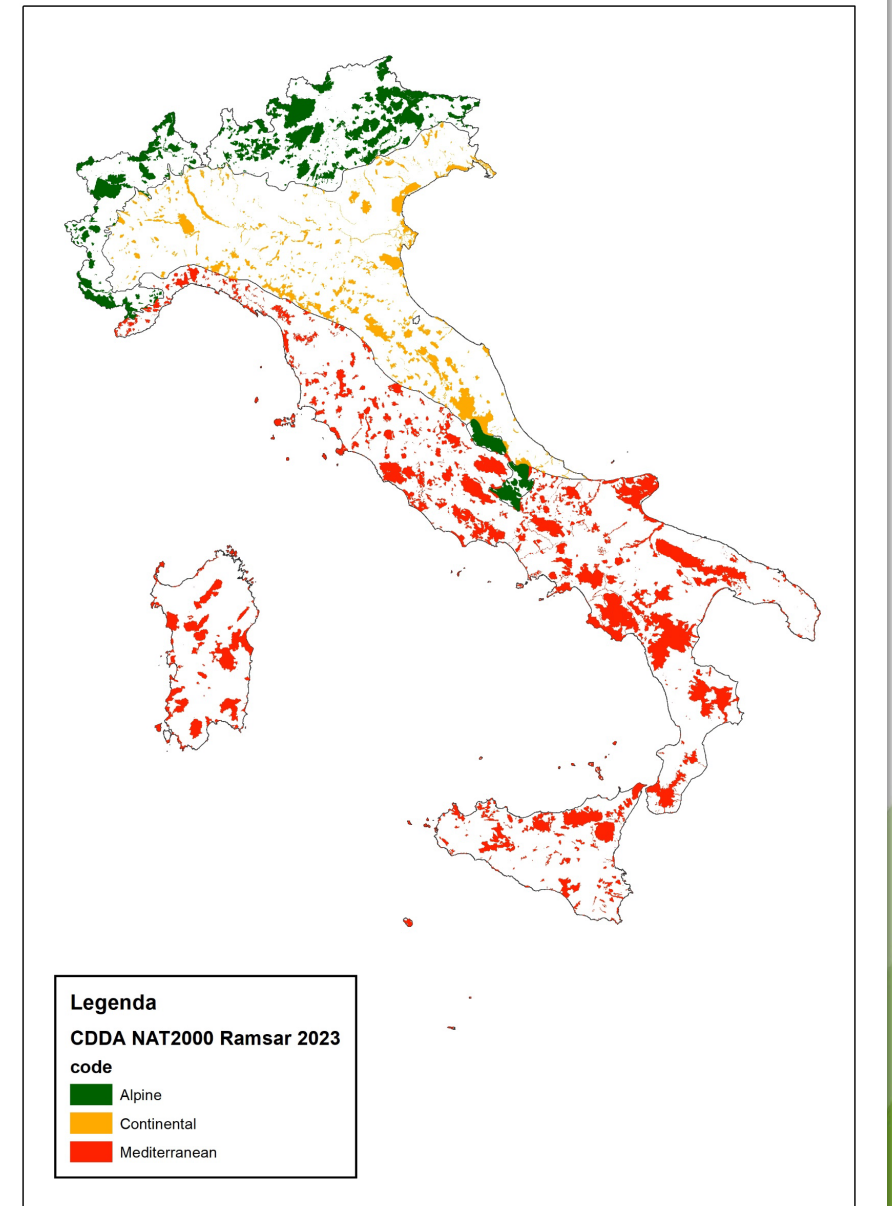
Current distance from pledges 30%



Current protected territory CDDA + Nat2000+Ramsar Sites

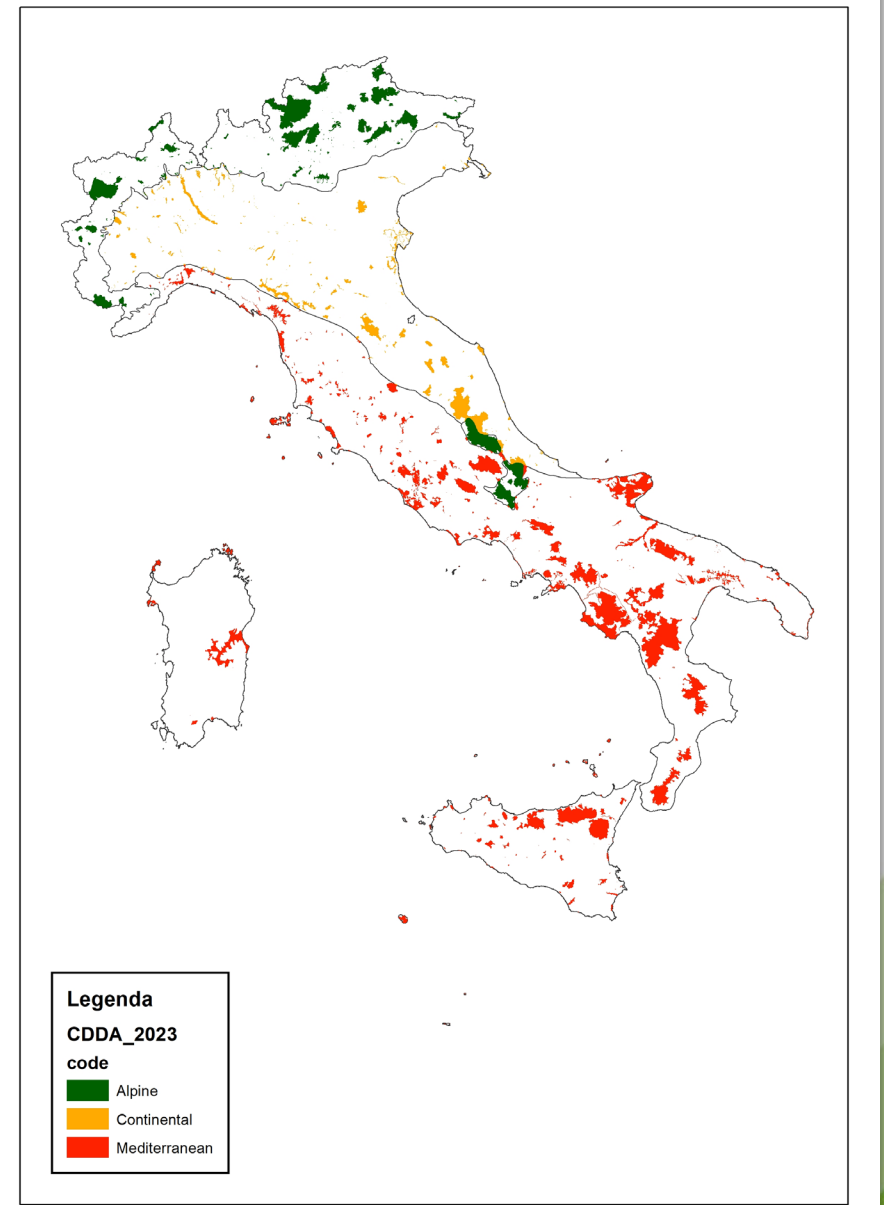
CDDA2023 - N2K2023 - Ramsar	Area (ha)	Biogeogr_reg (ha)	%NAT. Protected TERRITORY
ALP	1.684.843	5.095.016	33,07
CON	1.059.158	8.824.757	12,00
MED	3.795.977	16.275.143	23,32
Tot (terrestrial)	6.539.978	30.194.917	21,66

the surfaces calculation was done on WGS84_32N



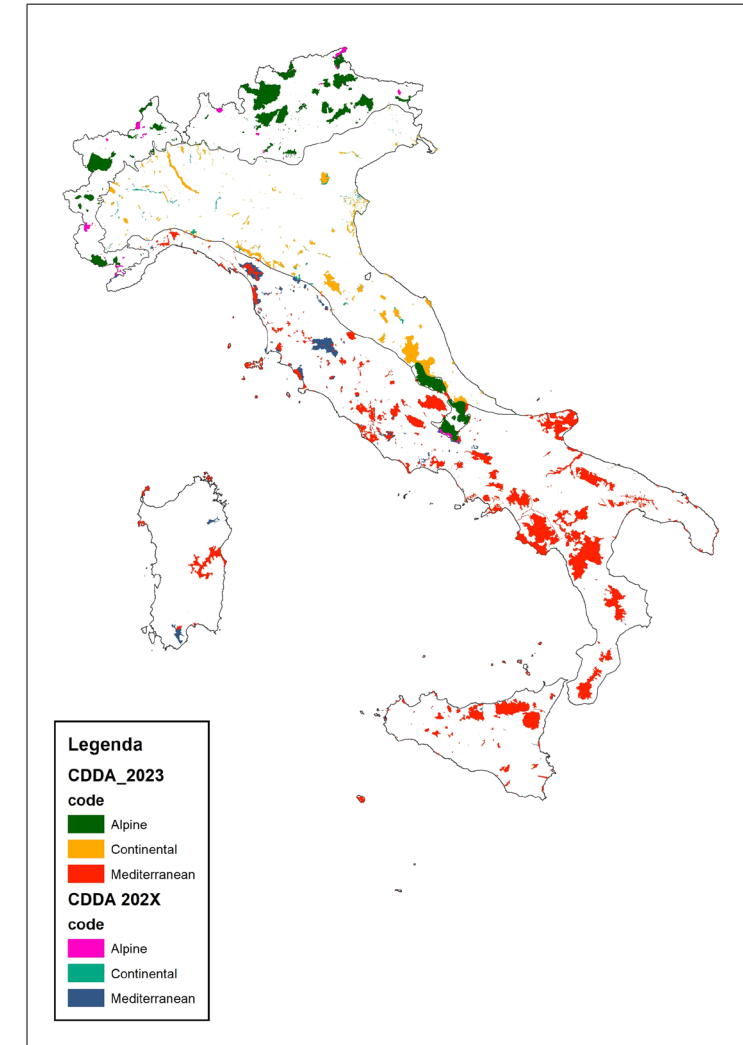
CDDA 2023

CDDA2023	Area (ha)	Biogeogr_reg (ha)	%NAT. Protected TERRITORY
ALP	834.094	5.095.016	16,37
CON	416.450	8.824.757	4,72
MED	1.896.336	16.275.143	11,65
Tot (terrestrial)	3.146.880	30.194.917	10,42



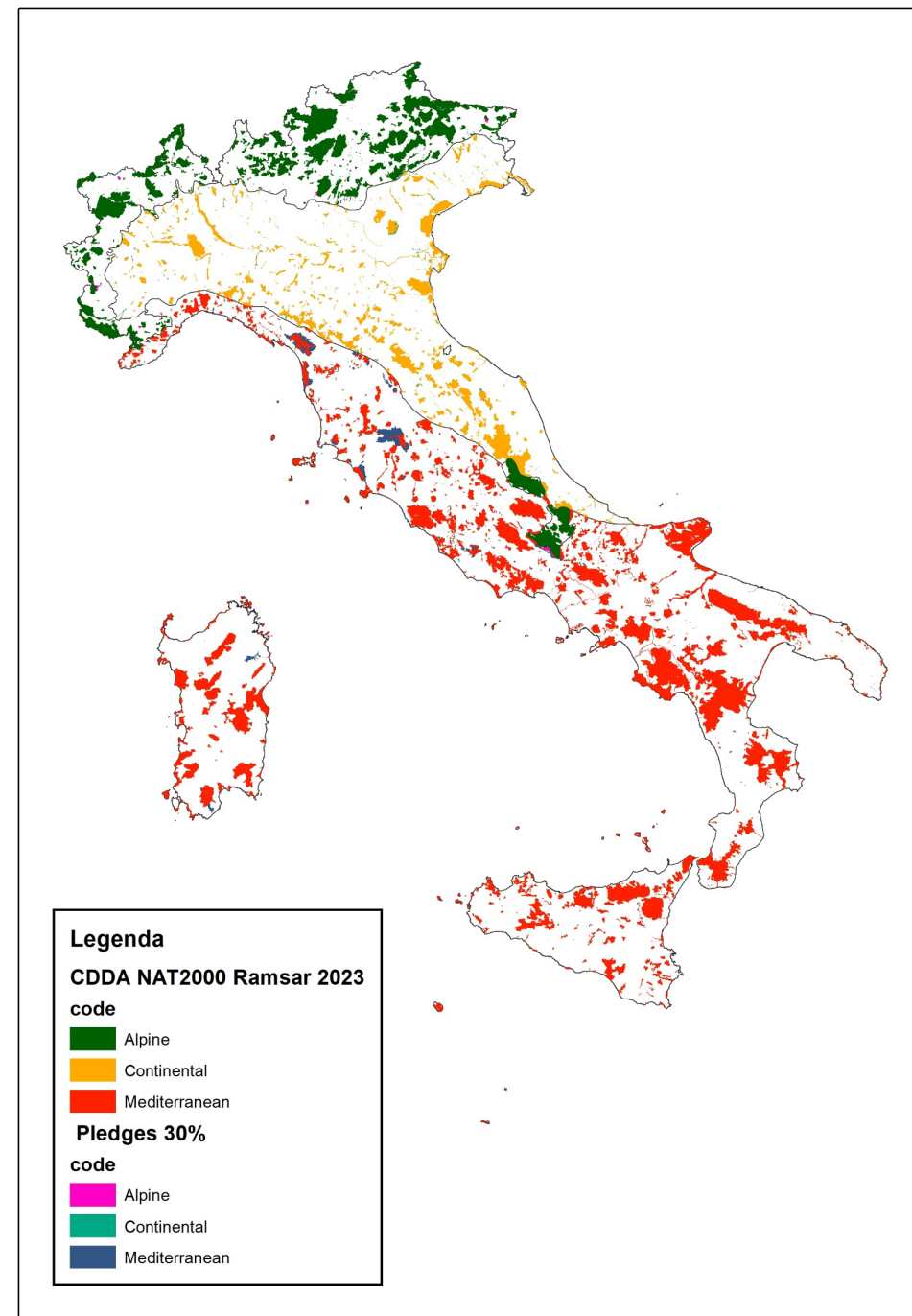
CDDA 202X

Protected areas type	N.	change respect CDDA 2023 N.	<i>Terrestrial protected area (ha)</i>	change respect CDDA 2023 (ha)
Nat. Parks	26	+1	1.478.349	+6.028
Marine Prot. Areas	29	=	-	
Nat. Natural Reserves	149	+1	126.830	+981
Others Nat. Prot. Areas	3	=		
Regional Parks	149	+15	1.386.614	+91.958
Reg. Natural Reserves	478	+113	254.596	+24.356
Others Reg. Prot. Areas	190	+19	46.639	-3.599
TOT.	1.024	149	3.293.028	+119.724

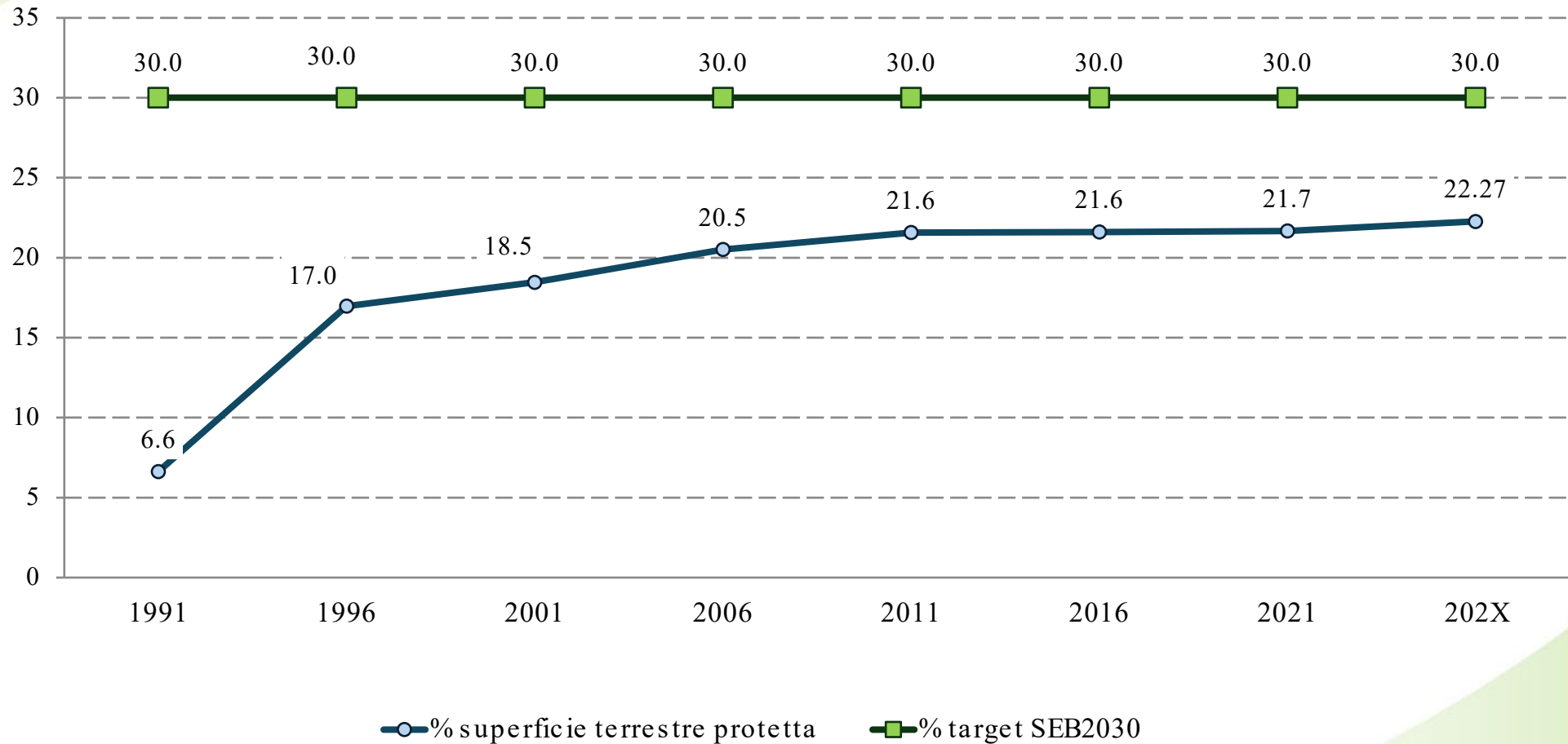


30% Pledge

CDDA202X- N2K2023 - Ramsar	Protected area (ha)	Biog reg (ha)	%NAT. Protected TERRITORY	change respect CDDA 2023 (%)
ALP	1.698.973	5.095.016	33,35	+0,28
CON	1.076.772	8.824.757	12,20	+0,20
MED	3.948.074	16.275.143	24,26	+0,94
Tot. (terrestrial)	6.723.819	30.194.917	22,27	+0,61



Pledge 30% = CDDA 202X + N2K + Ramsar



10% strictly protected evaluation criteria

- What the Commission guidance (SWD (2022) 23 final) provides:

“Strictly protected areas are fully and legally protected areas designated to conserve and/or restore the integrity of biodiversity-rich natural areas with their underlying ecological structure and supporting natural environmental processes. Natural processes are therefore left essentially undisturbed from human pressures and threats to the area’s overall ecological structure and functioning, independently of whether those pressures and threats are located inside or outside the strictly protected area”.

- What the national law on protected areas (L. n. 394/1991) provides:

In the protected areas activities that may compromise the protection of the landscape and protected natural environments, flora, Fauna & habitat, are prohibited, except as provided for civic uses for the local population

In particular, are prohibited:

- a) the capture, killing, damage, disturbance of animal species; the collection and damage of plant species, except in territories where agro-forestry-pastoral activities are permitted, as well as the introduction of foreign plant or animal species that may alter the natural balance;
- b) the opening and operation of quarries, mines and landfills, as well as the removal of minerals;
- c) the modification of the water regime;
- d) carrying out advertising activities outside urban centers, not authorized by the Park Authority;
- e) the introduction and use of any means of destruction or alteration of biogeochemical cycles;
- f) the introduction, by private individuals, of weapons, explosives and any means of destruction or capture, if unauthorized;
- g) the use of open fires;
- h) unauthorized overflight of aircraft, except as defined by flight regulation laws.

The Park management plan Law 394/1991 art.12

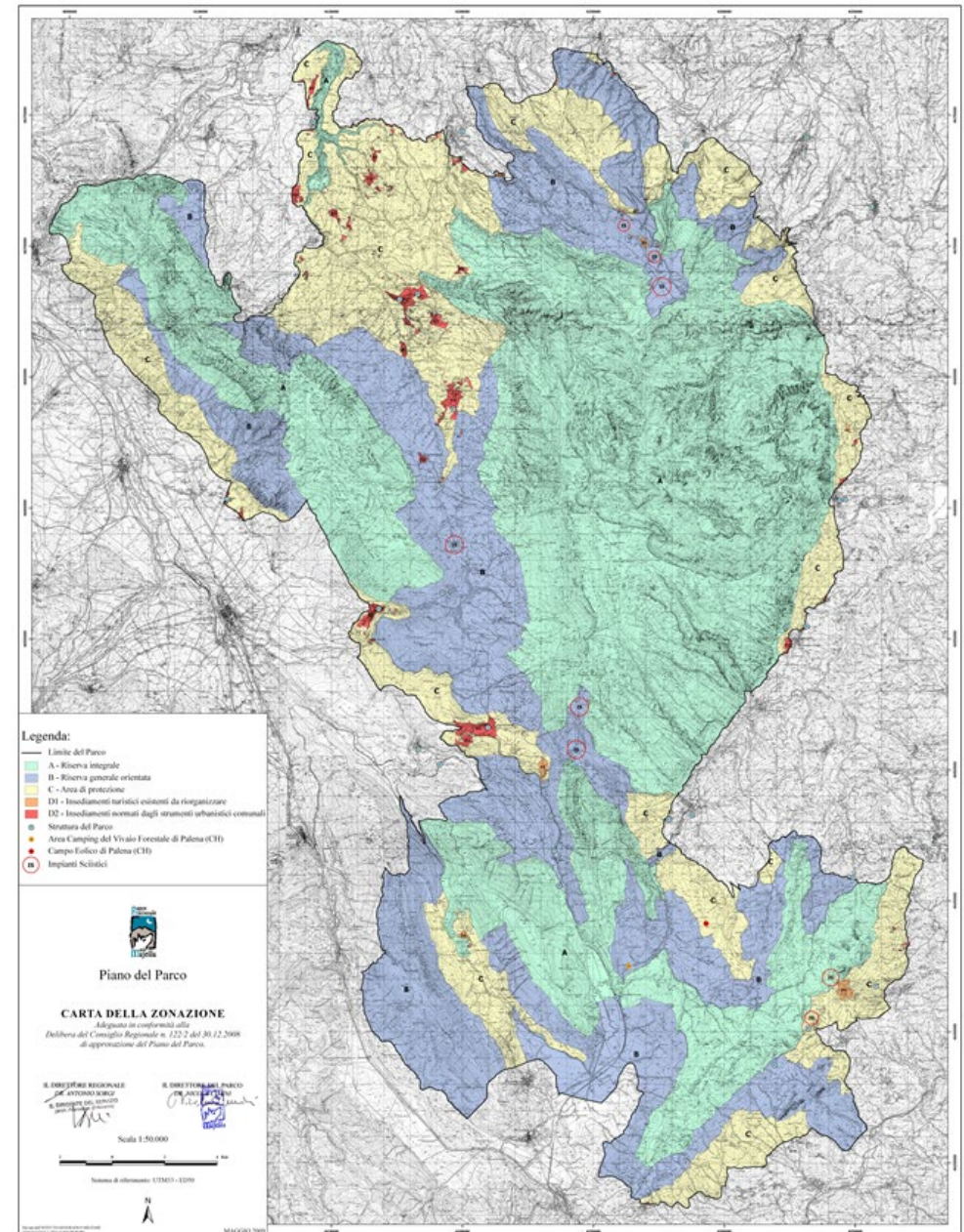
The protection of natural, environmental, historical, cultural and anthropological values is defined by the Park plan in the different zones:

A- full reserves

B- integral oriented reserves

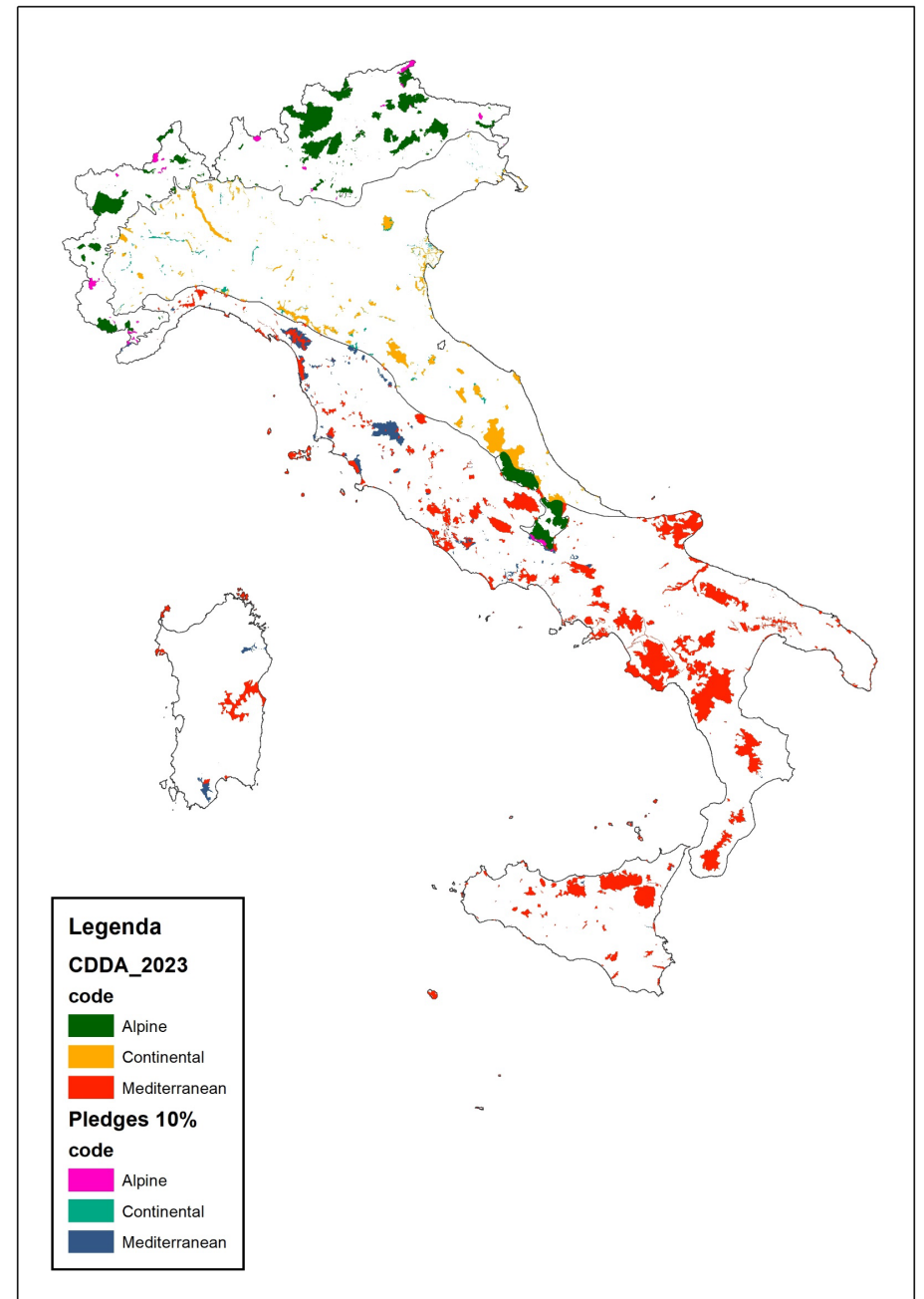
C - protection areas in accordance with the park's conservation objectives

D- areas of economic and social promotion allow activities compatible with the Park's conservation objectives, in line with urban planning



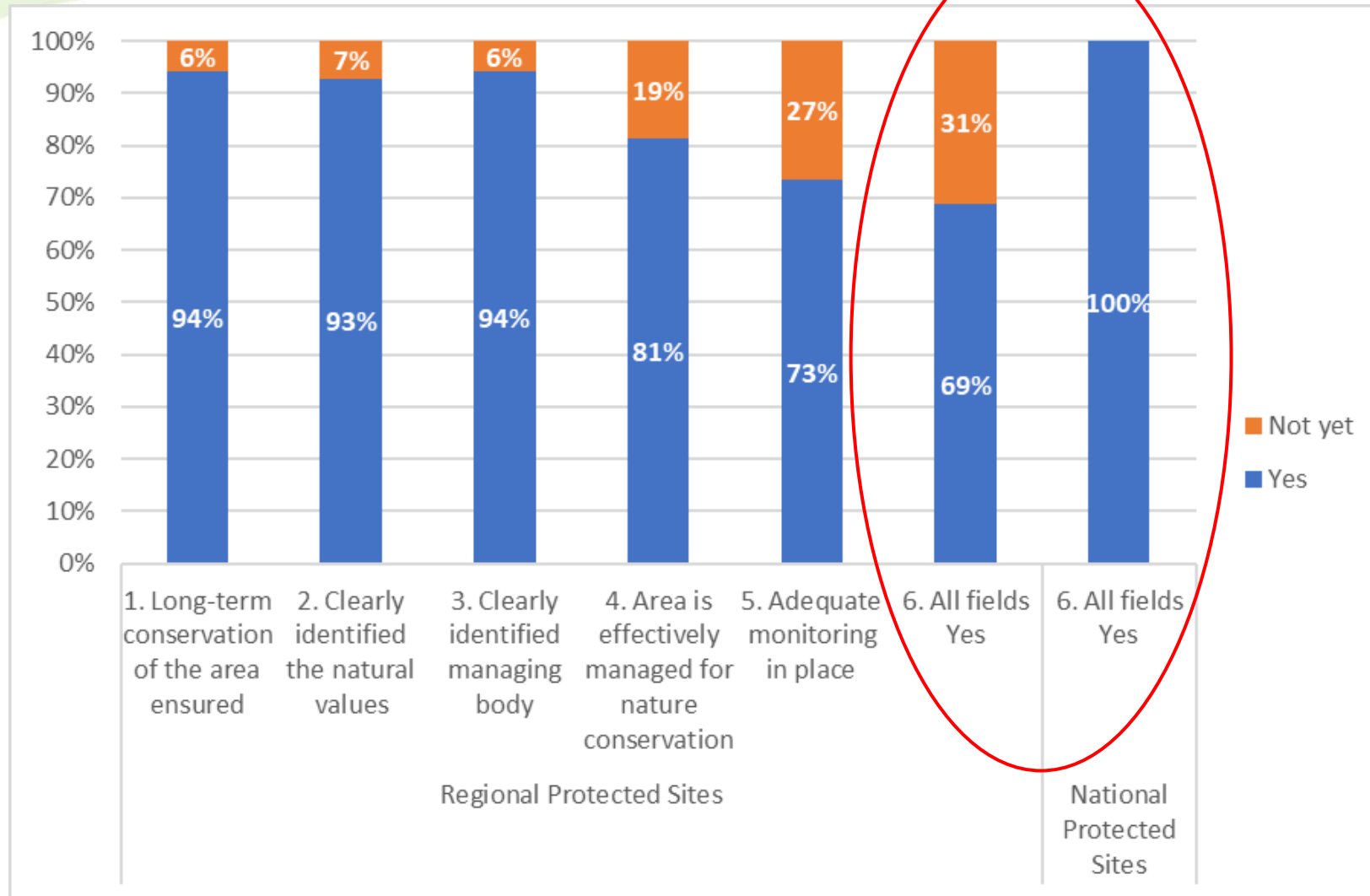
Proposal for 10% pledges

CDDA202X	Surface (ha)	Biog_Reg (ha)	% Prot. territory	Change % Prot. territory
ALP	896.983	5.095.016	17,61	+1,24
CON	468.181	8.824.757	5,31	+0,59
MED	2.113.122	16.275.143	12,98	+1,33
Tot CDDA terrestrial sites	3.478.285	30.194.917	11,52	+1,10



Management of CDDA protected areas

Answers to the questions in Tab. 2.2 on pledges in CDDAPA from regional and central administrations



Conclusions

- 30% pledge: the forecast is to reach 22.27% of the protected national territory, with 149 new protected areas which add a surface area of approximately 120,000 ha
 - the contribution of the OECMs is being evaluated
- 10% pledge: it should coincide with the protected areas established under national law n. 394/91 – (CDDA 202X)
- Management of CDDA protected areas: 69% of the regional CDDA protected areas and 100% of the national ones are managed in line with the pledges