



GOBIERNO
DE ESPAÑA

MINISTERIO
PARA LA TRANSICIÓN ECOLÓGICA
Y EL RETO DEMOGRÁFICO

ORGANISMO
AUTÓNOMO
PARQUES
NACIONALES



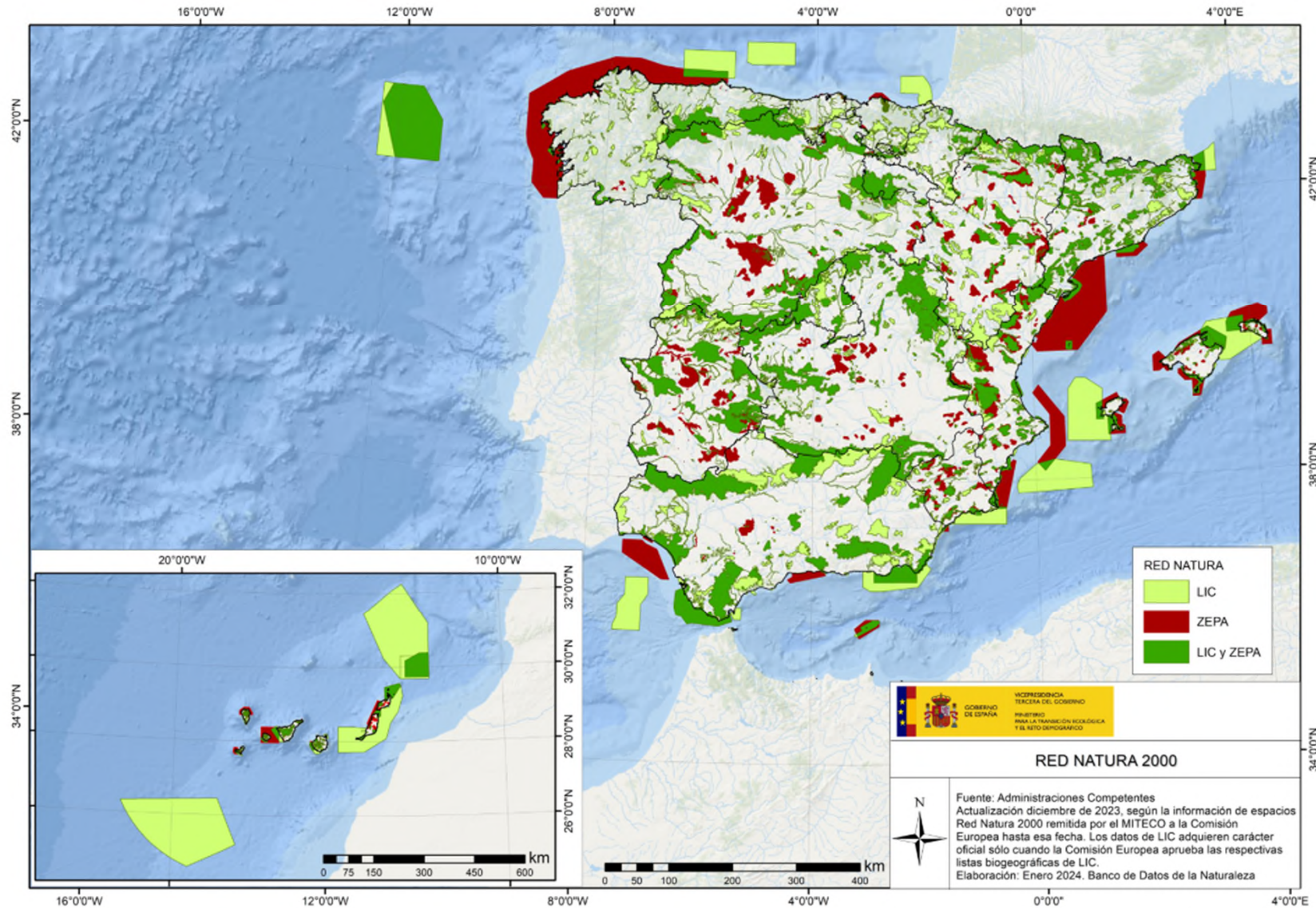
RED DE
PARQUES NACIONALES

SPANISH NATIONAL PARKS NETWORK

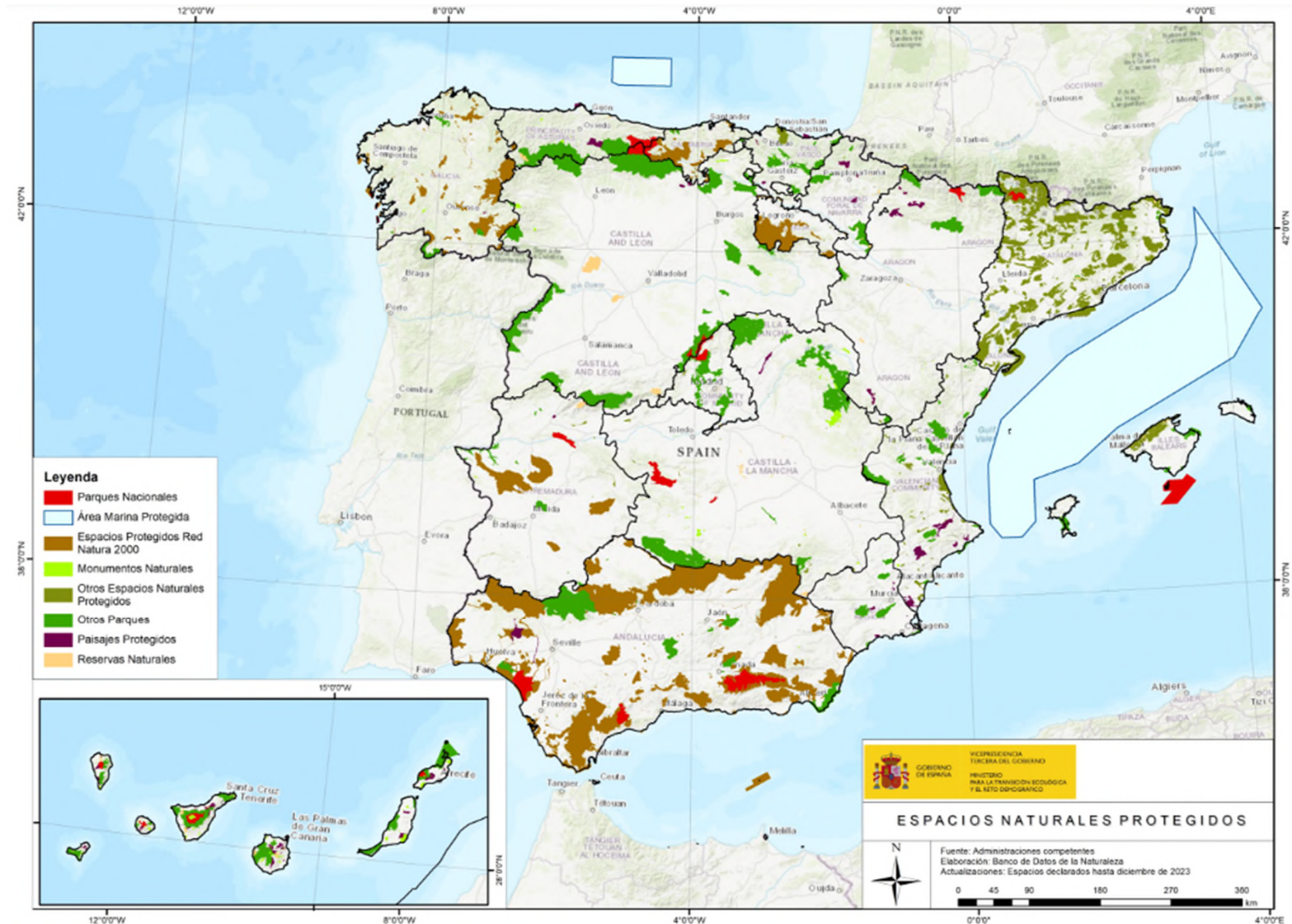
Experiences in Spain with strictly protected
areas and National Parks

Jorge Bonache López
Organismo Autónomo Parques Nacionales
Ministerio para la Transición Ecológica y el Reto Demográfico
España (Spain)
jbbonache@oapn.es

Spain is working to contribute to EU Biodiversity Strategy for 2030



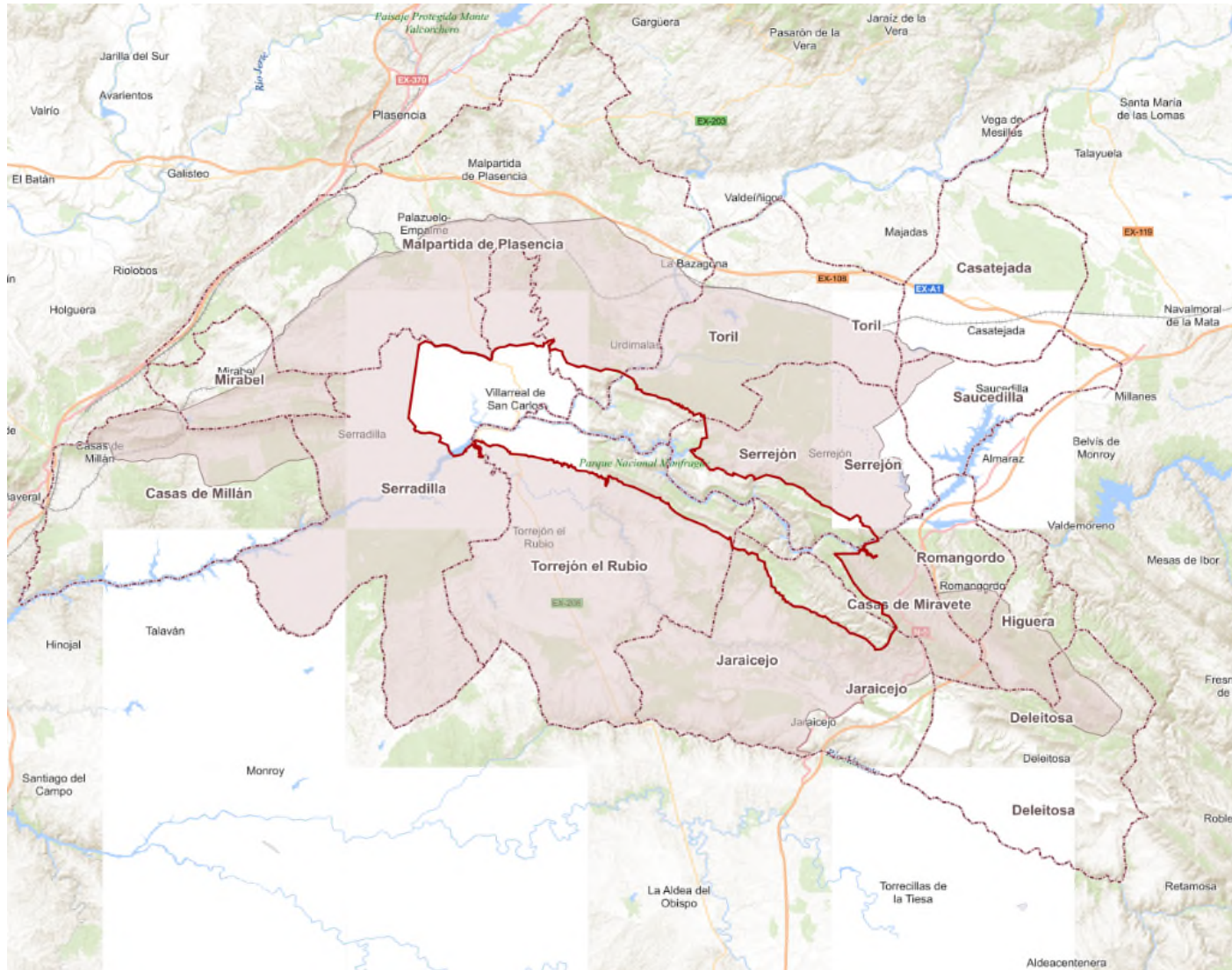
Nature Reserves and National Parks: an approach to strict protection



The example of Spanish National Parks Network



National Park: boundary, buffer zone and socioeconomic influence area



Picos de Europa: declared in 1918



Ordesa y Monte Perdido: declared in 1918



Sierra Nevada: biodiversity hotspot



Sierra de Guadarrama: near the city of Madrid



Sierra de las Nieves (2021): *Abies pinsapo*



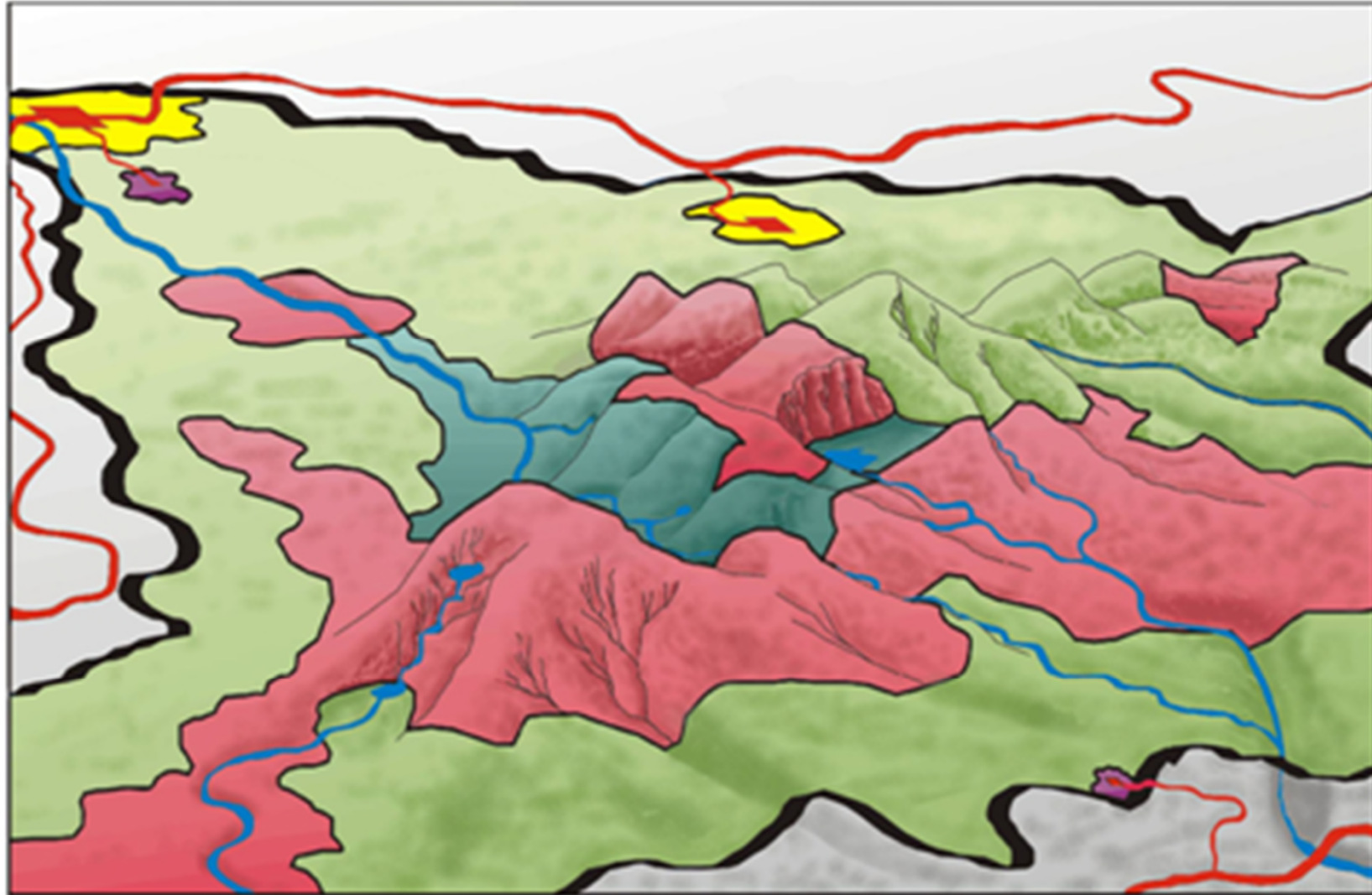
Management scheme

- **National Parks management (regions):** conservation, monitoring, research, public use, social and economic development, etc.
- **Network management and coordination (Ministry):** adapt activities to the common framework with the help of different forums, promote and develop common actions and manage information that facilitates monitoring and evaluation.

Protection regime: incompatible activities

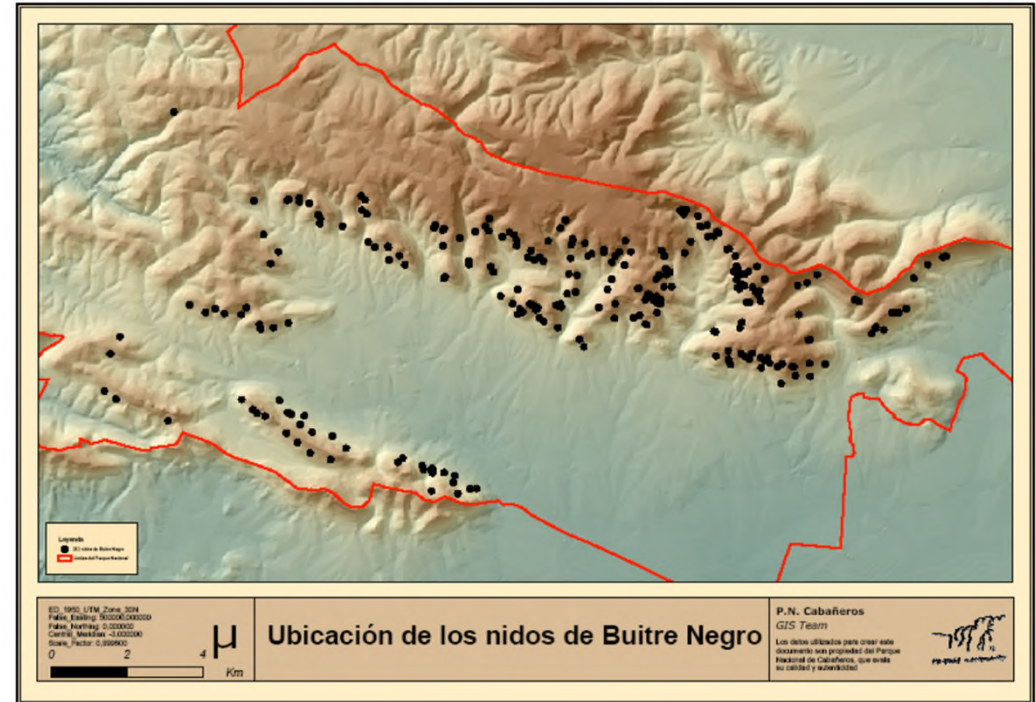
- Sport and commercial hunting.
- Recreational fishing.
- Logging for commercial purposes.
- Hydroelectric uses and other infrastructures.
- Mining exploitation.
- Urbanization.
- Overflight at a certain altitude (with exceptions).

Regulation by zoning: reserve, restricted use, moderate use...



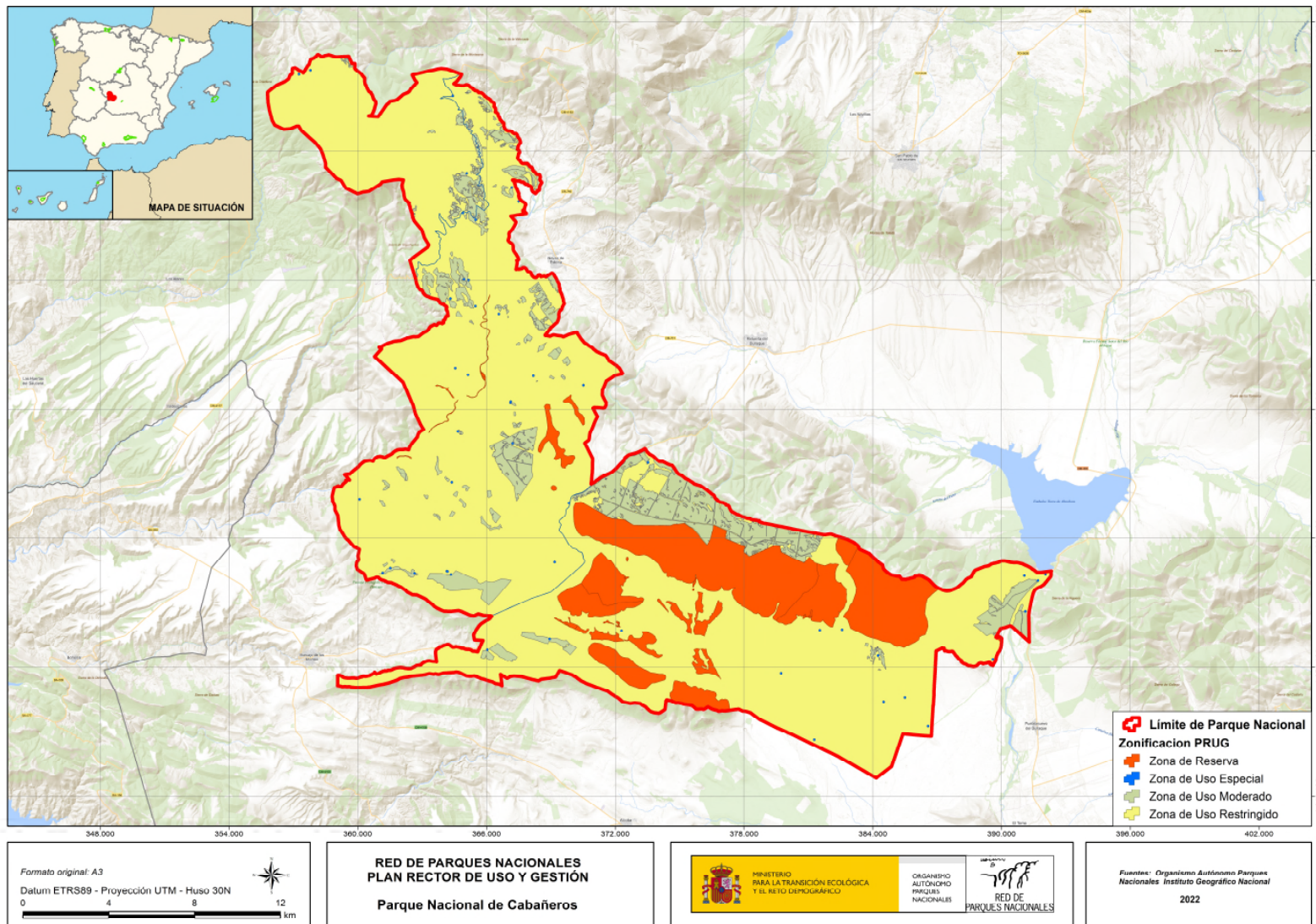
- Zona de Asentamientos Tradicionales
- Zona de Uso Moderado
- Zona de Reserva
- Zona de Uso Especial
- Zona de Uso Restringido
- Límite del Parque

Example of reserve area: nesting areas of the black vulture

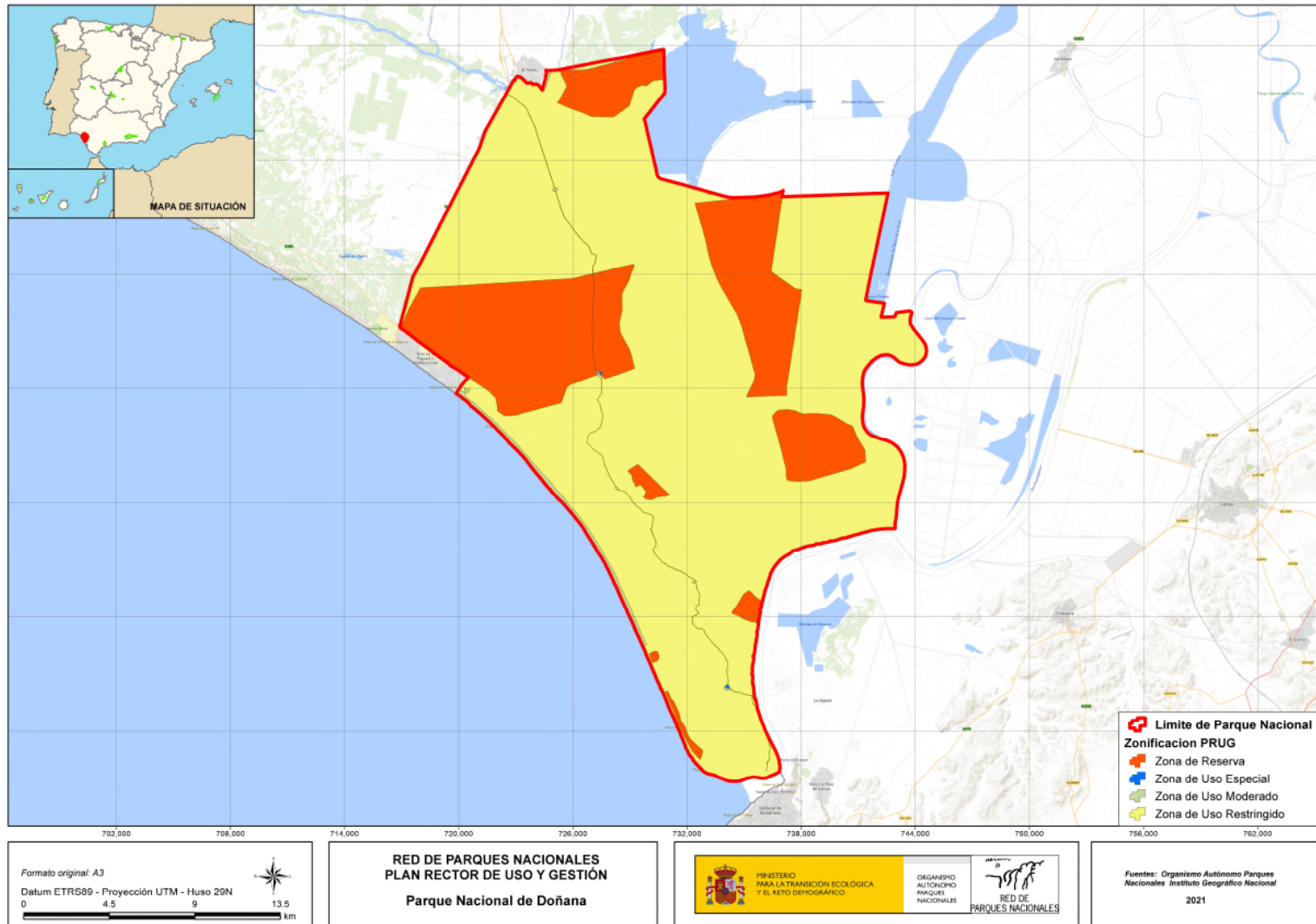


Fle:

Cabañeros: restricted use as the most abundant area



Doñana: restricted use as the most abundant area



Extensive livestock grazing: permitted in several national parks



Extensive livestock grazing: process of abandonment



Extensive livestock grazing: naturalness and loss




XXXIII Certamen del Queso y la Artesanía de los Picos de Europa
Panés, sábado 30 de julio de 2023

Mercado Artesano durante todo el día en las calles de Panés.
Participan artesanos del queso, pan, sidra, carne, miel, maderes, hierros, hucheyos, ferros, etc.

Jornadas Gastronómicas viernes 29, sábado 30 y domingo 31

Desfile de grupo de gaitas con la Banda "Picos de Europa DOP Cabrales" Tren Turístico

20h. **V Festival de Tonada Homenaje a María Sánchez "La Pastorina del Cares"** con las actuaciones de:
Güeyos de la Montaña
Cristina Sánchez (Cuñaba)
Jose Manuel Collado (La Borbolla)
Jose Antonio González (El cantu la vara)
Celestino Rozada (Porrua)
Gaitero: Ramón García (Avilés)

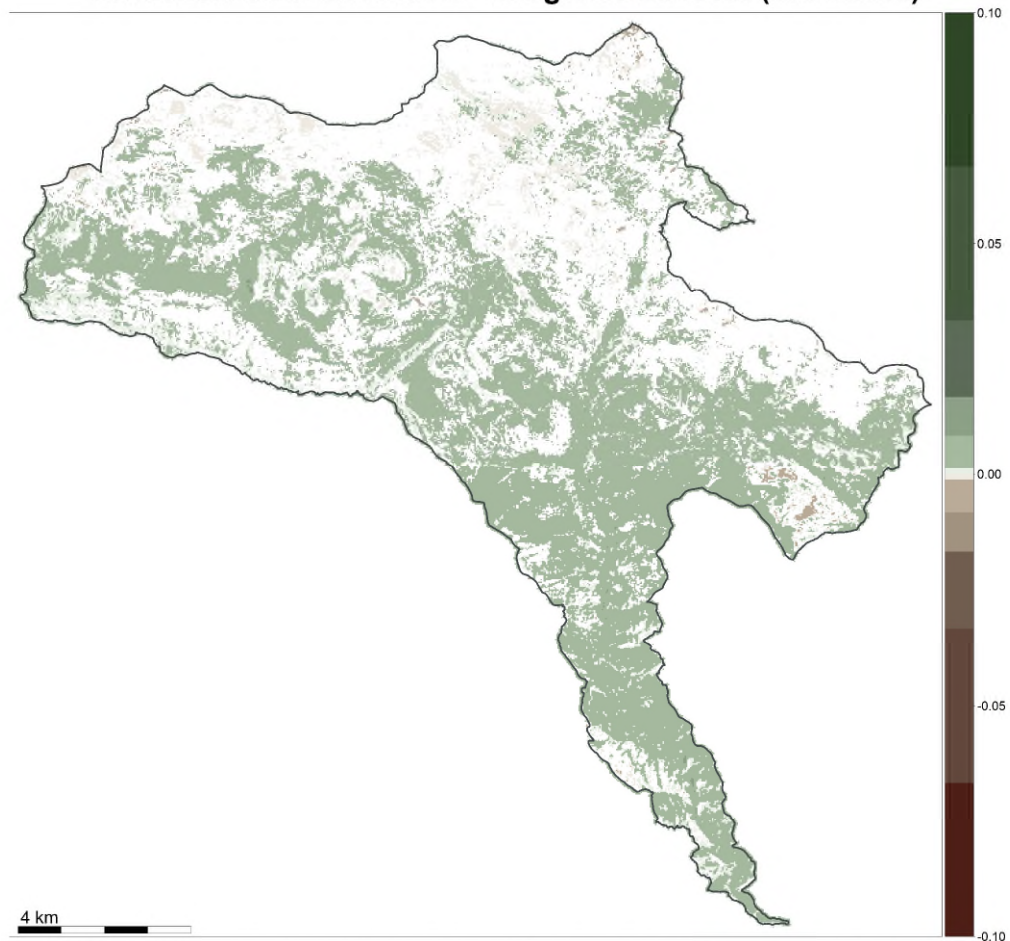
Mapa de la Zona Certamen



nelmelero.com

REMOTE system: primary productivity and scrub

PARQUE NACIONAL DE ORDESA Y MONTE PERDIDO
Tendencia en el EVI medio - Imágenes Landsat (1984/2022)



Tendencia observada en la producción primaria, estimada a partir de la pendiente que describen los valores del EVI medio anual a lo largo de toda la serie temporal. El p-valor seleccionado es 0.10. (1984/2022)

Use of water for agriculture: conservation problems in wetlands



Artisanal fishing plan in Cabrera Archipelago



Ecological importance of the seabeds





Other uses: cork harvesting and agriculture



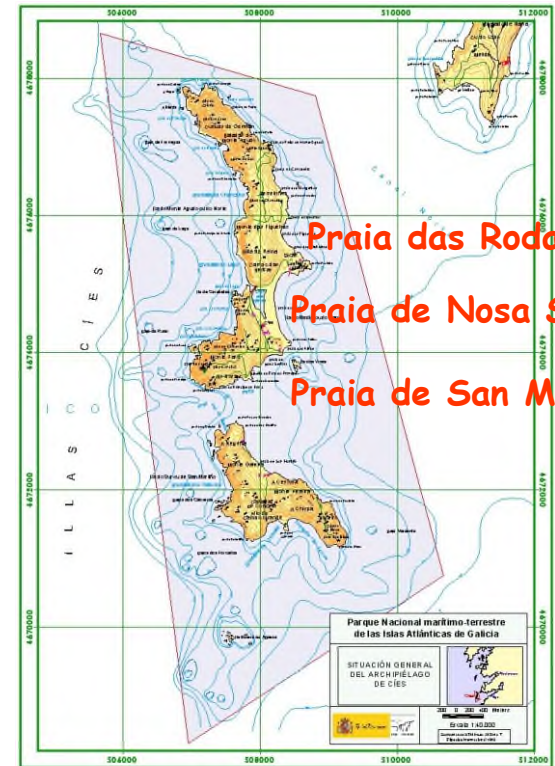
Infraestructure: only if necessary to achieve management objectives



Tourism is growing in national parks



Regulation with authorizations

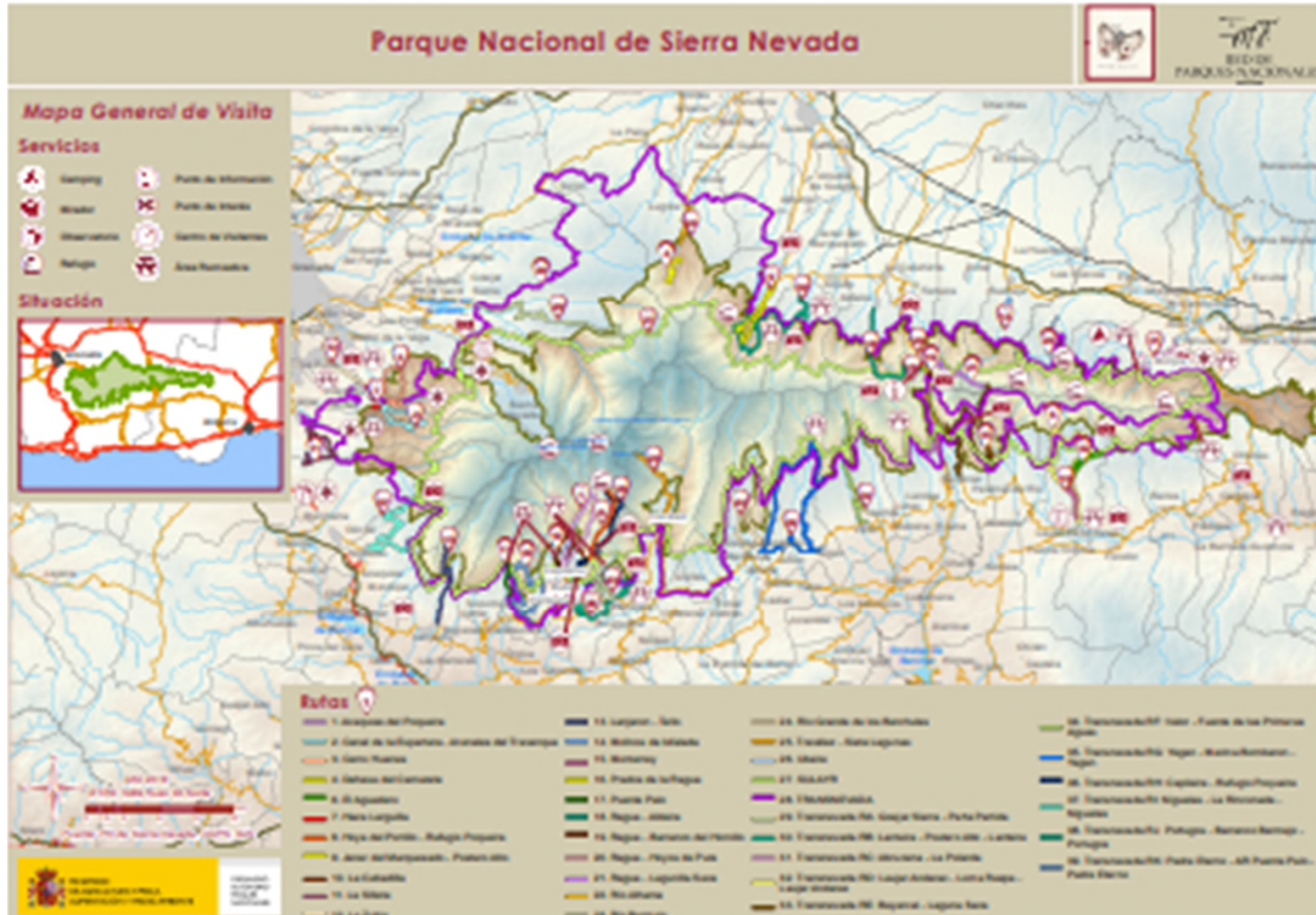


Agreements with the tourism sector

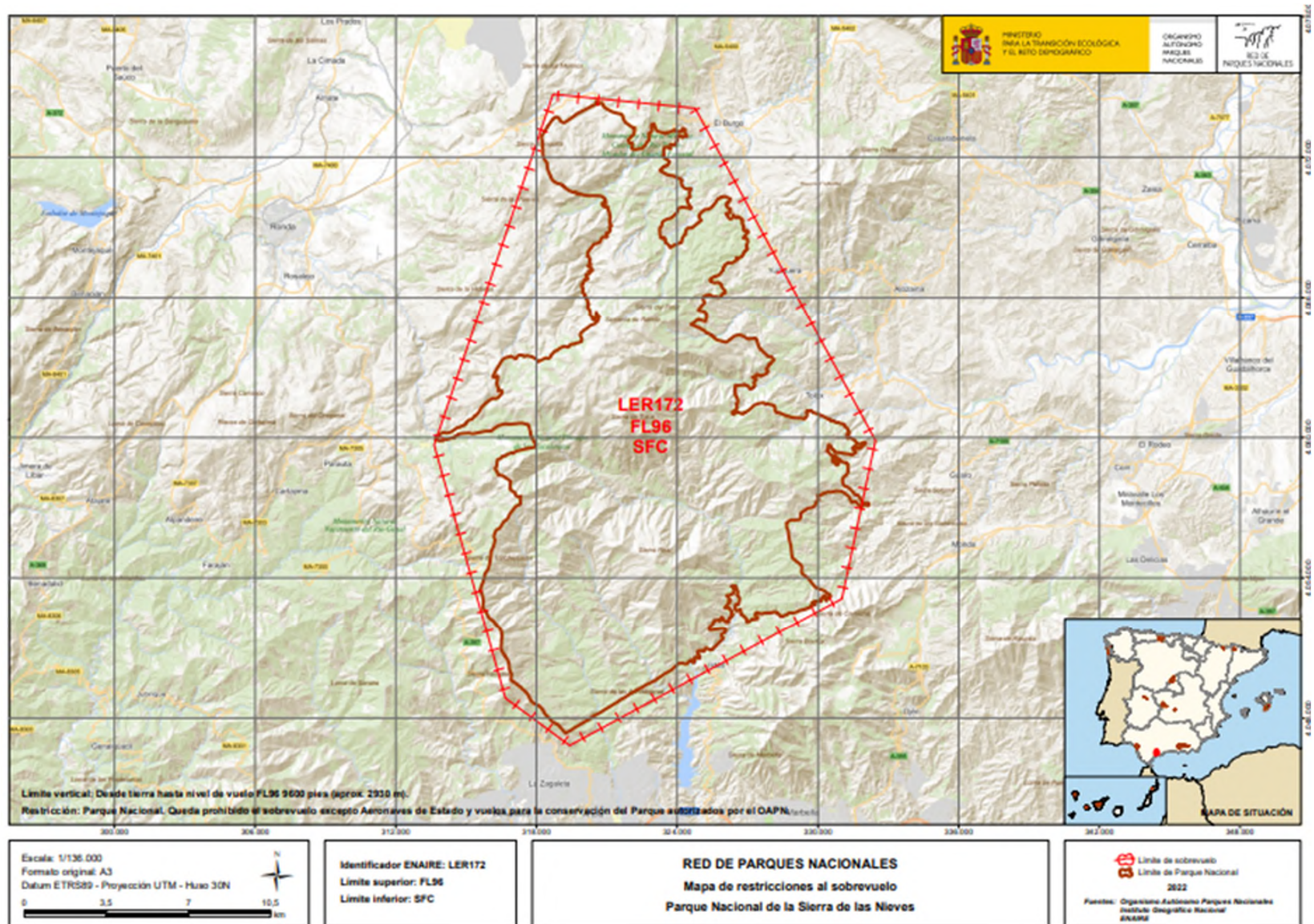


EUROPARC
Sustainable Tourism
in Protected Areas

Visit map: thinking about visitors and conservation



Overflight: restricted areas and altitude

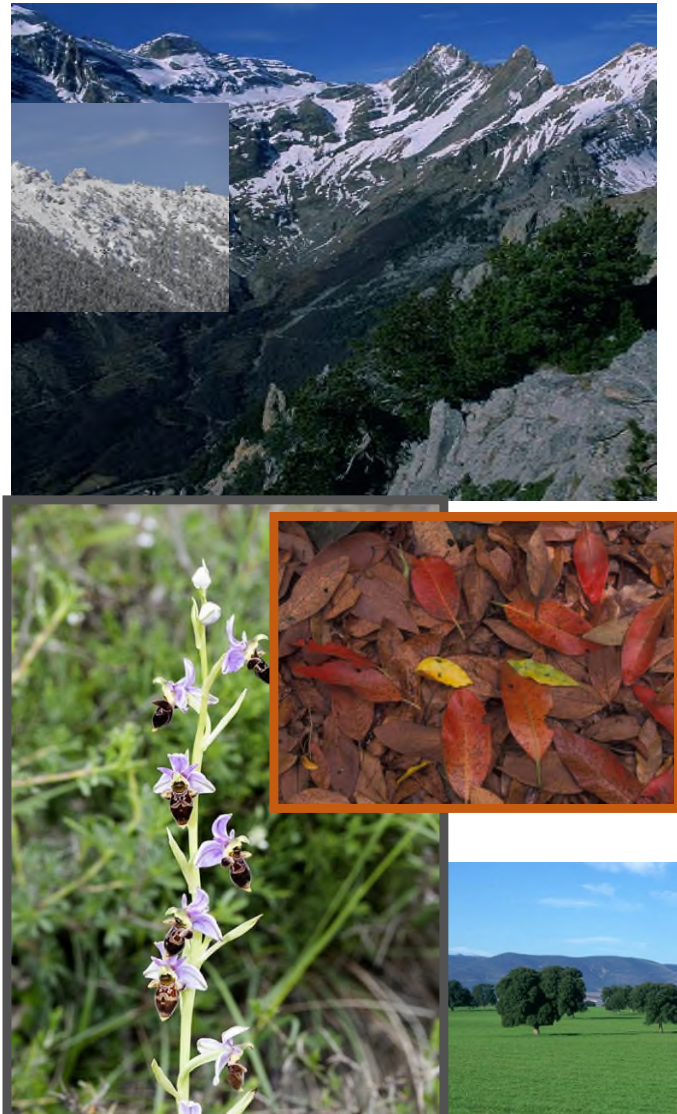


Importance of ecosystem services

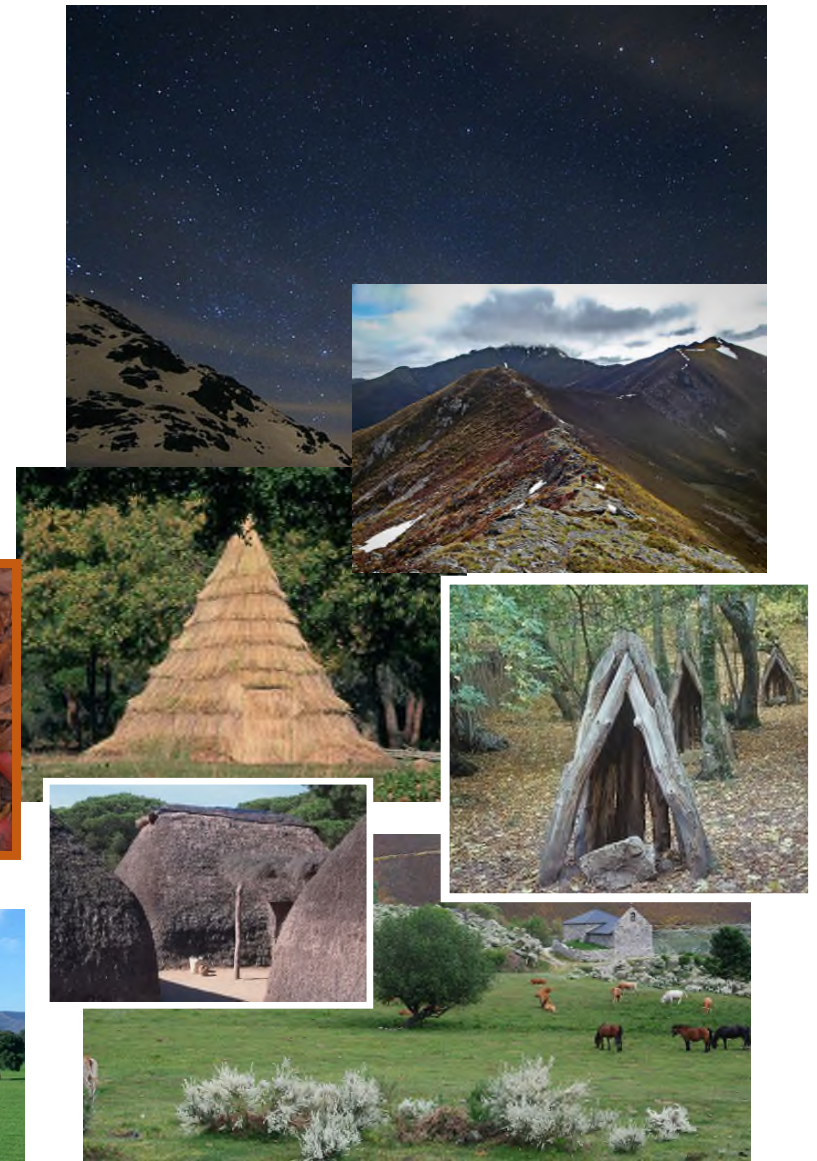
PROVISIONING SERVICES



REGULATING SERVICES



CULTURAL SERVICES



<https://www.miteco.gob.es/es/red-parques-nacionales/>

THANKS FOR YOUR ATTENTION