

Protected areas pledges

Where are we – inventory, overview and distance to target Continental, Alpine, Pannonian, Steppic & Black Sea regions

Mette Lund / 25 June 2024

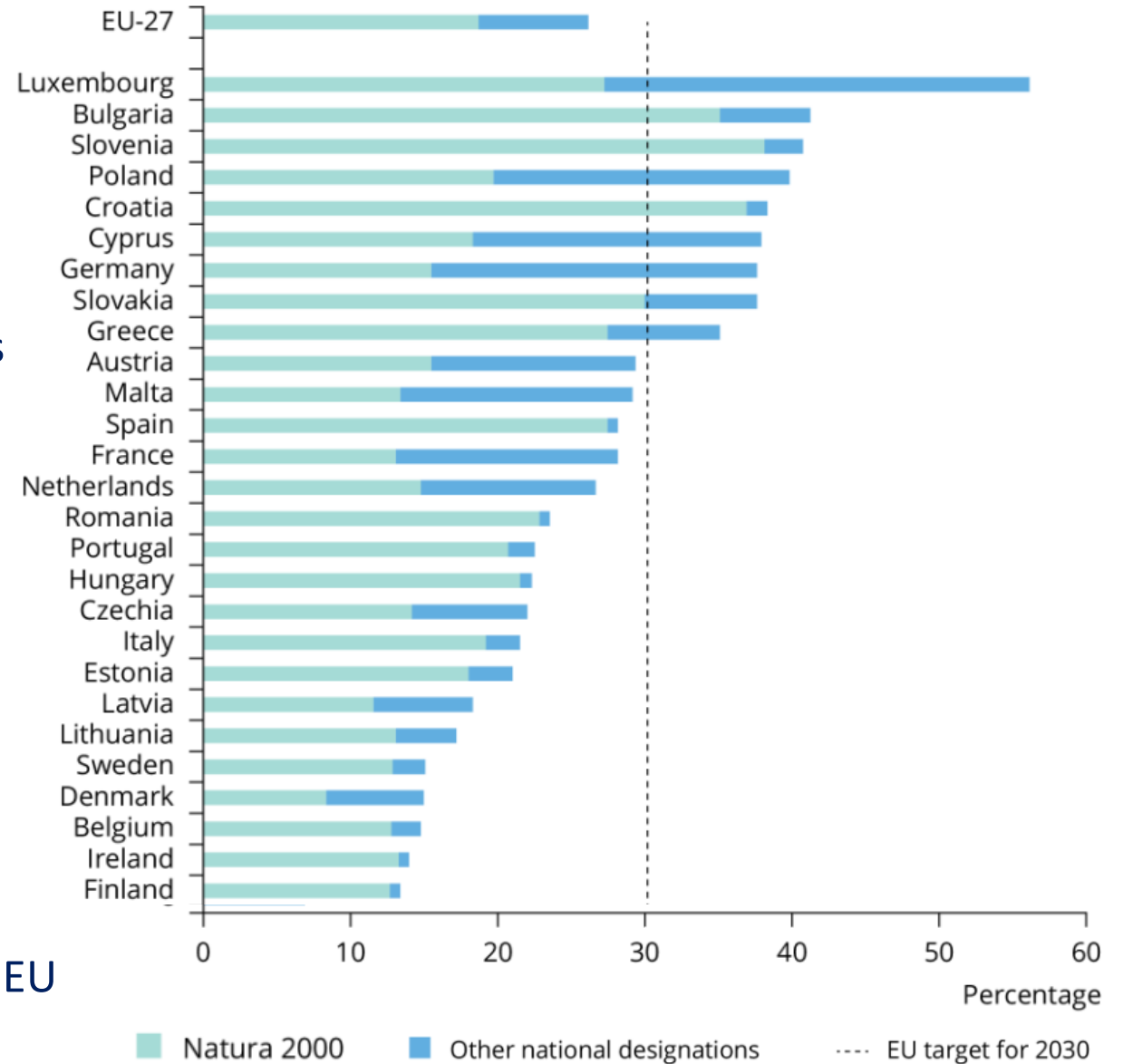
Protected areas – current dataflows

EEA supports annual data reporting for:

- Natura 2000 sites
- Nationally designated areas

This information is compiled to produce statistics on protected areas coverage at EU, biogeographical regions and member state level

Terrestrial protected areas in the EU

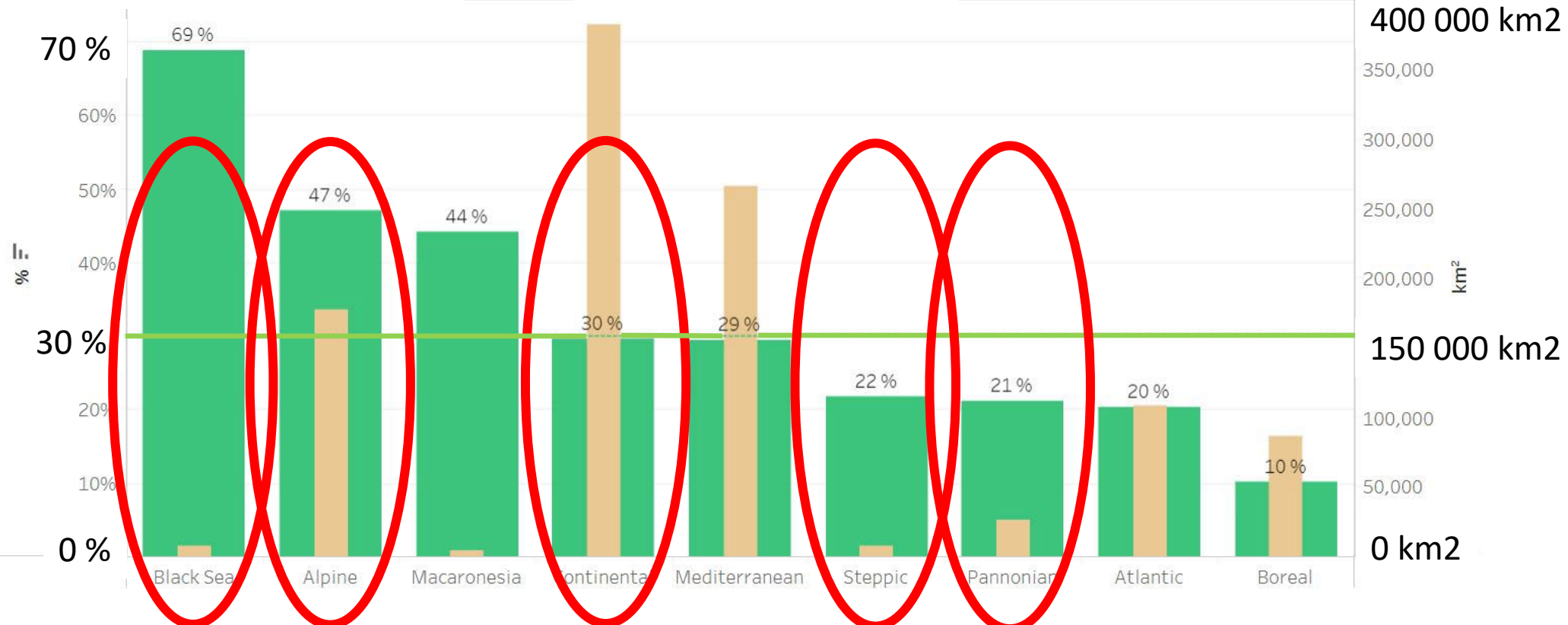


Protected areas coverage by biogeographical region

Terrestrial protected area by biogeographical regions (EU27)

Green = PA % biogeo region coverage

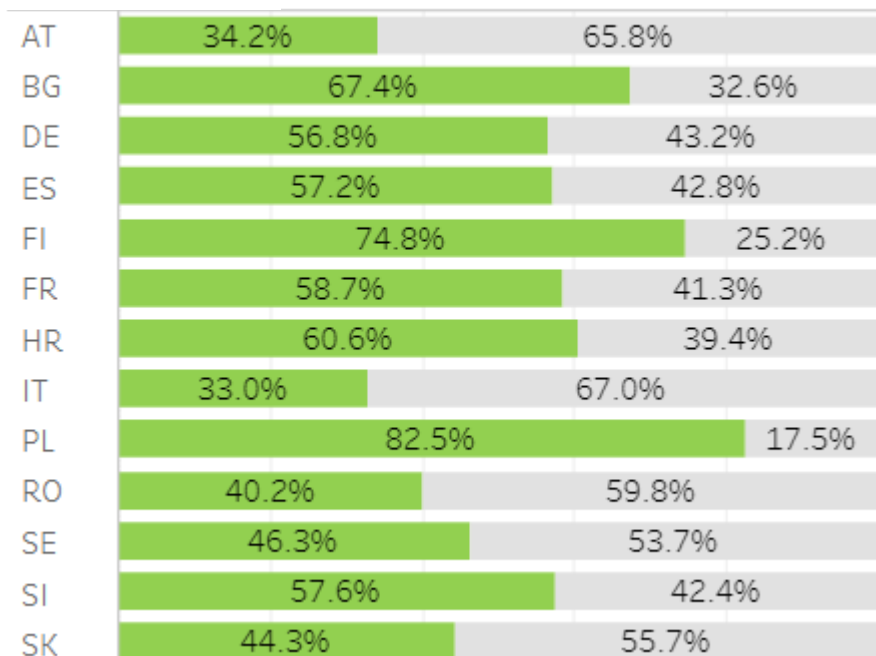
Brown = PA area in km²



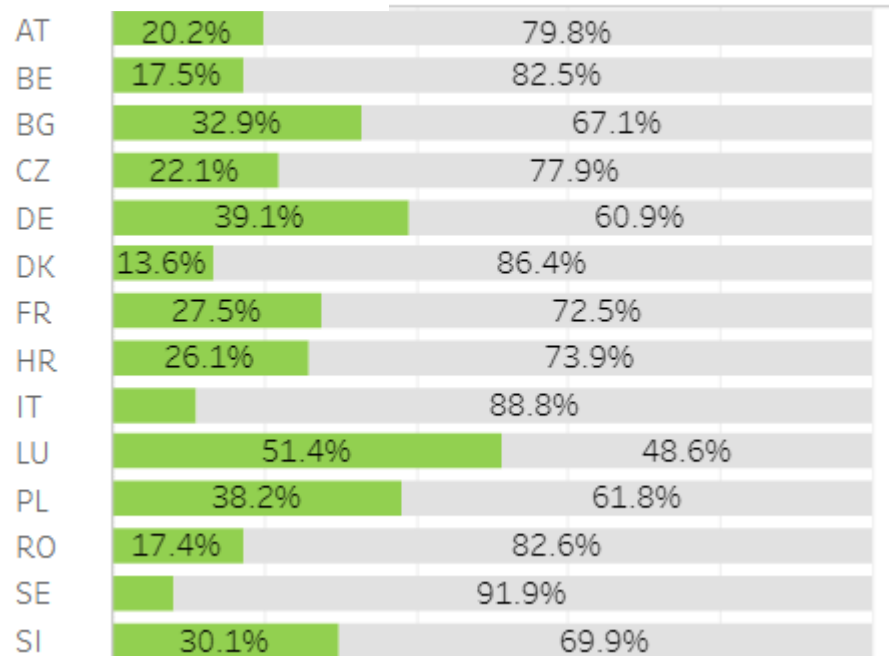
Based on Natura 2000 data reported by Dec 2020 and national sites data by March 2021 – analysis of status prior to the pledge process

Protected areas coverage by MS – per region

Alpine region



Continental region

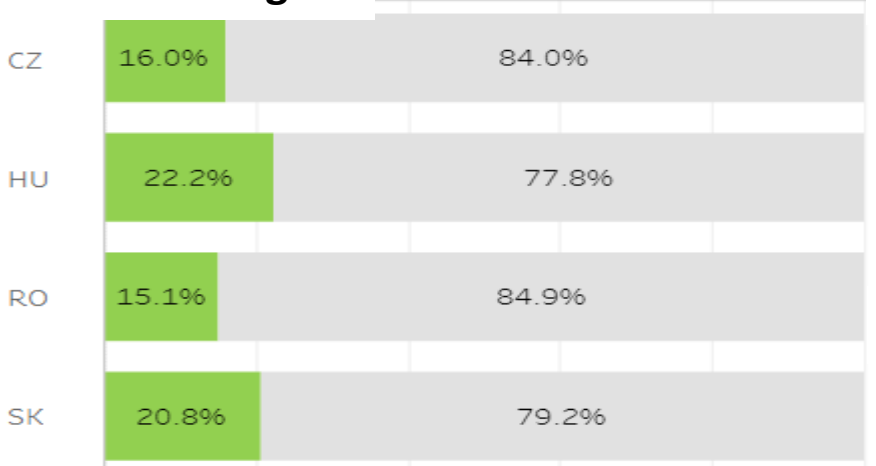


Based on Natura 2000 data reported by Dec 2020 and national sites data by March 2021

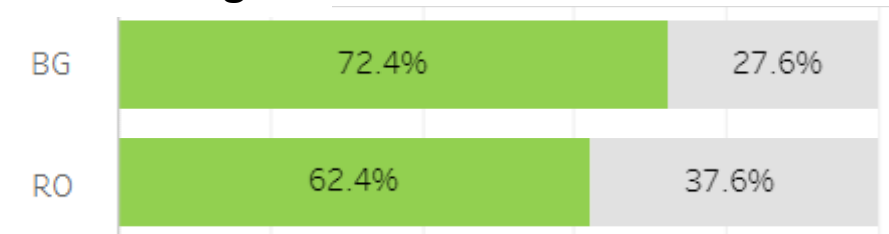
– analysis of status prior to the pledge process

Numbers are available in online dashboard [link](#)

Pannonian region



Black Sea region



Steppic region



Pledges for the protected areas target



European Union



Reportnet

Reportnet 3 > Dataflows > Dataflow



Biodiversity pledges - protected areas

Biodiversity pledges - protected areas

Obligation: Pledges on protected areas [↗](#)

Instrument: EU Biodiversity Strategy for 2030 [↗](#)

Member state submissions may be downloaded from Reportnet 3
<https://reportnet.europa.eu/public/dataflow/703>

Cyprus ↗	-	Pending	
Czechia ↗	2024-06-03 17:08	Technically accepted	
Denmark ↗	2023-04-28 13:24	Technically accepted	
Estonia ↗	-	Pending	
Finland ↗	-	Pending	
France ↗	2023-12-20 11:32	Technically accepted	
Germany ↗	2023-03-15 19:42	Technically accepted	
Luxembourg ↗	2023-02-28 17:38	Technically accepted	
Spain ↗	2024-04-19 10:07	Technically accepted	
Sweden ↗	2023-06-21 13:28	Technically accepted	

Pledges received for the protected areas target

Continental region

Sweden

Denmark

Germany

Luxembourg

Czechia

France

Alpine region

Sweden

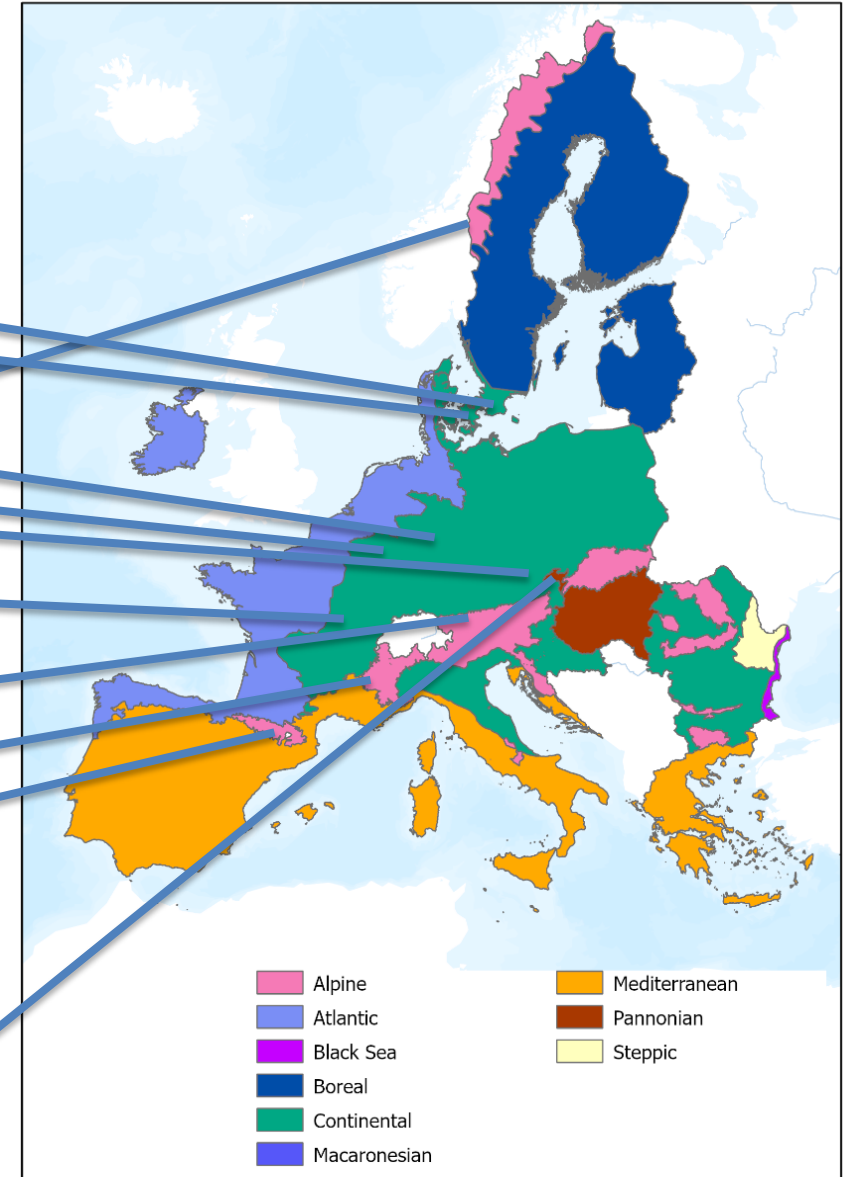
Germany

France

Spain

Pannonian region

Czechia



Structure and content of the information reported in the pledges

General information

- Protected areas extent per biogeographical/marine region – current and expected by 2030 (1.1)
- OECMs extent per biogeographical/marine region – current and expected by 2030 (1.2)
- Area under strict protection per biogeographical/marine region – current and expected by 2030 (1.3)
- Explanation on coherence of the network (1.4)

Current nationally designated areas reported in NatDA which should be counted towards the 30% target

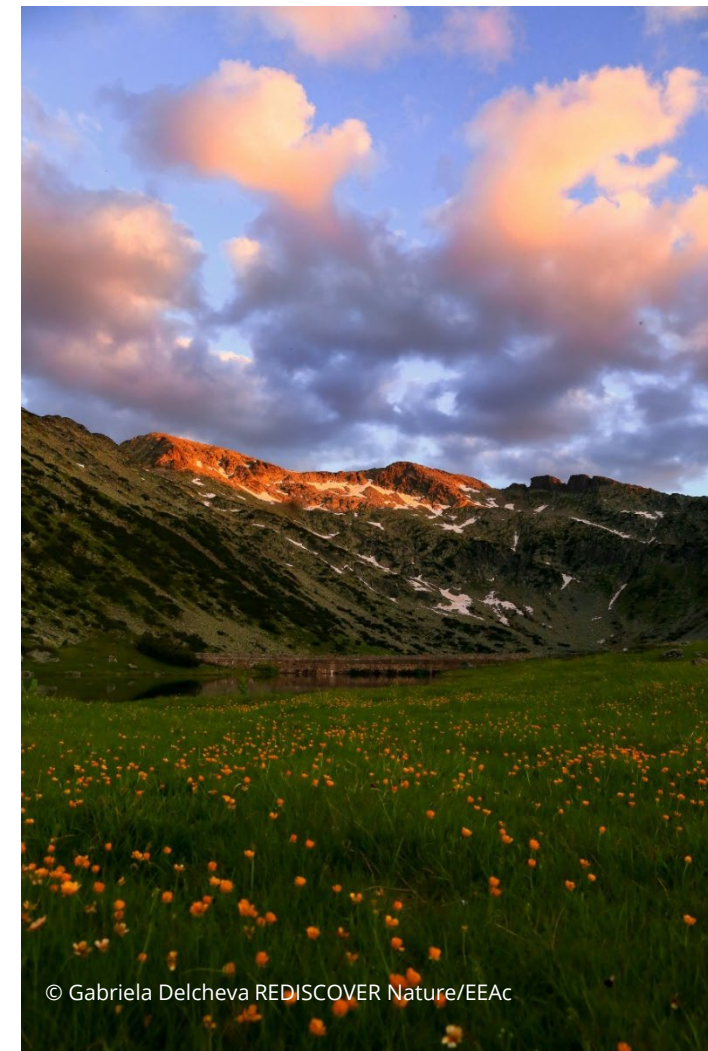
- Per designation type (2.1) or individual sites (2.2)

Current OECMs reported in NatDA which should be counted towards the 30% target (3)

Current Natura 2000 sites and nationally designated areas that should be counted towards the 10% strict protection target

- Per designation type (4.1) or individual sites (4.2)

Pledges for future protected areas and OECMs (5)

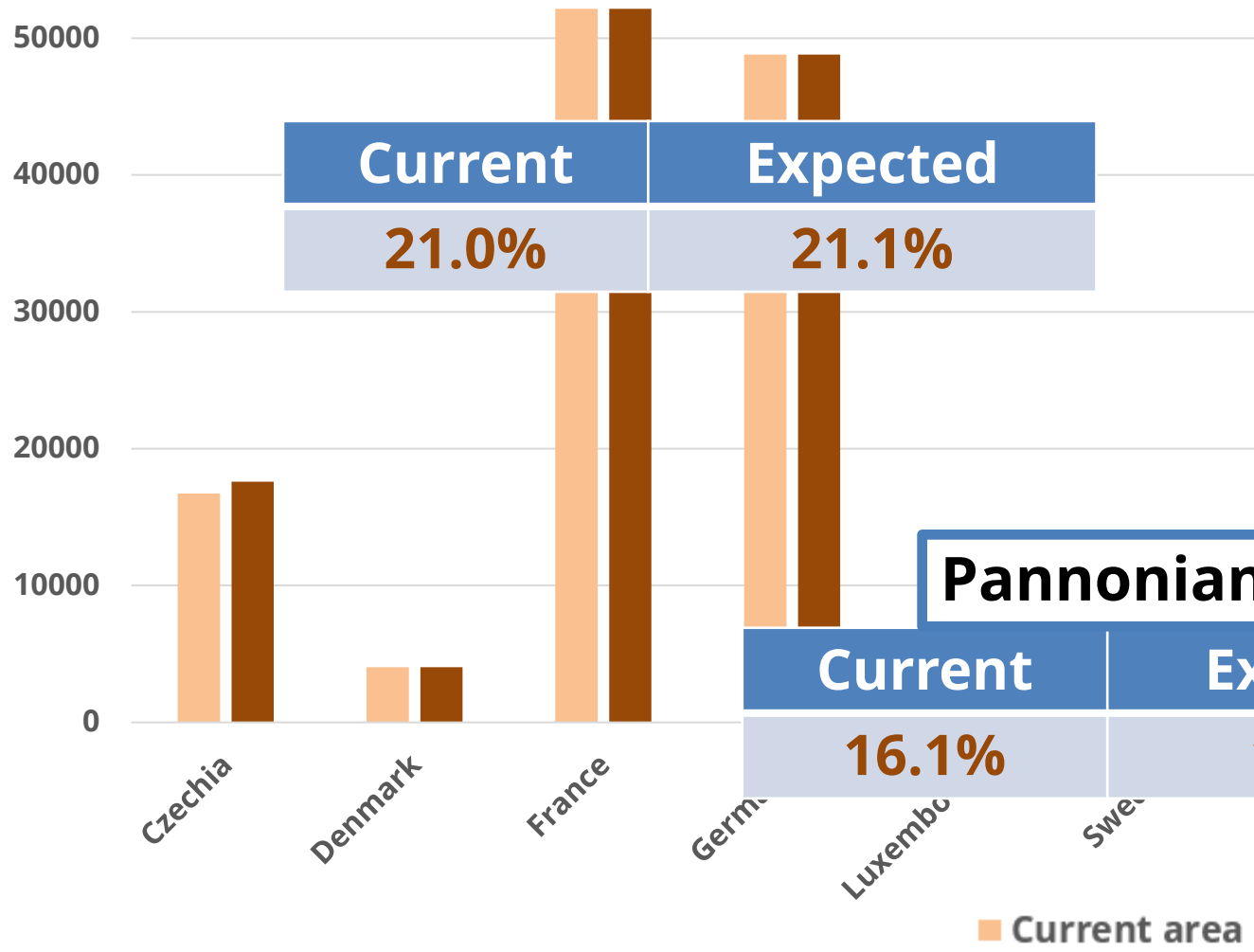


© Gabriela Delcheva REDISCOVER Nature/EEAc

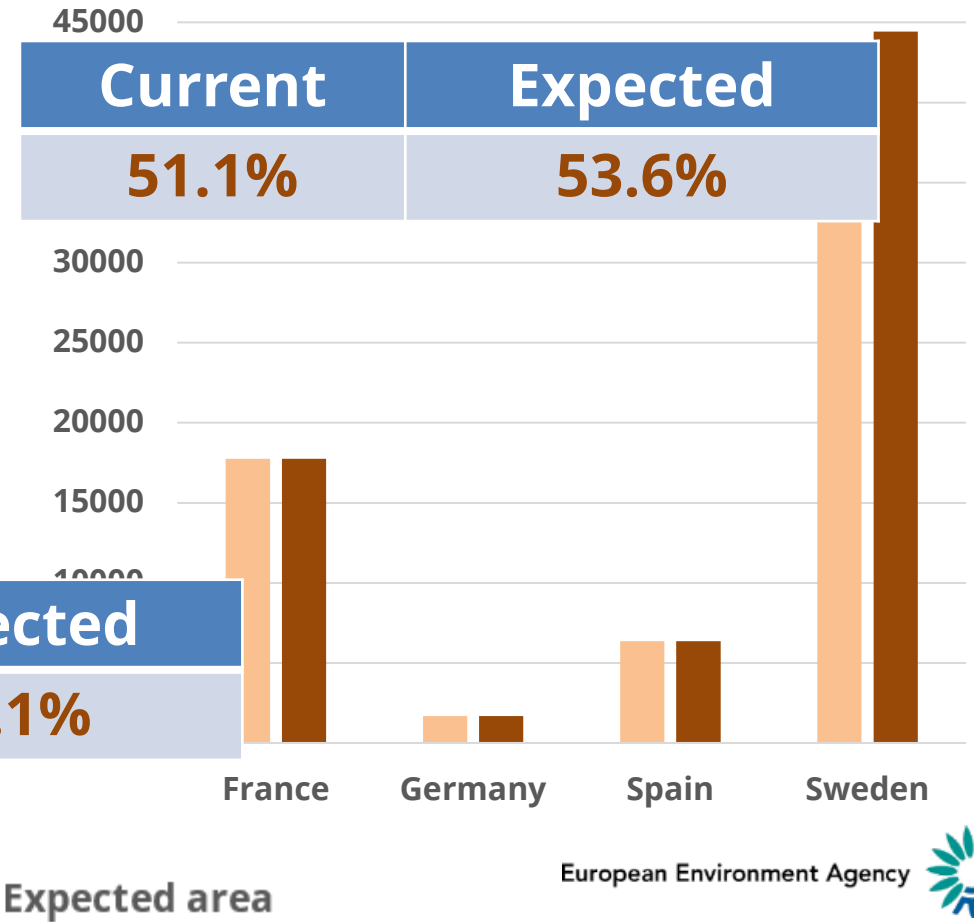
Information submitted in the pledges (table 1.1)

General information: Total current and expected area covered by protected areas (km²)

Continental



Alpine



Information submitted in the pledges (table 1.2)

General information: Total current and expected area covered by OECMs (km²)

Continental	Current	Expected
Czechia	0	4191
Sweden	2	2

Alpine	Current	Expected
Sweden	214	214

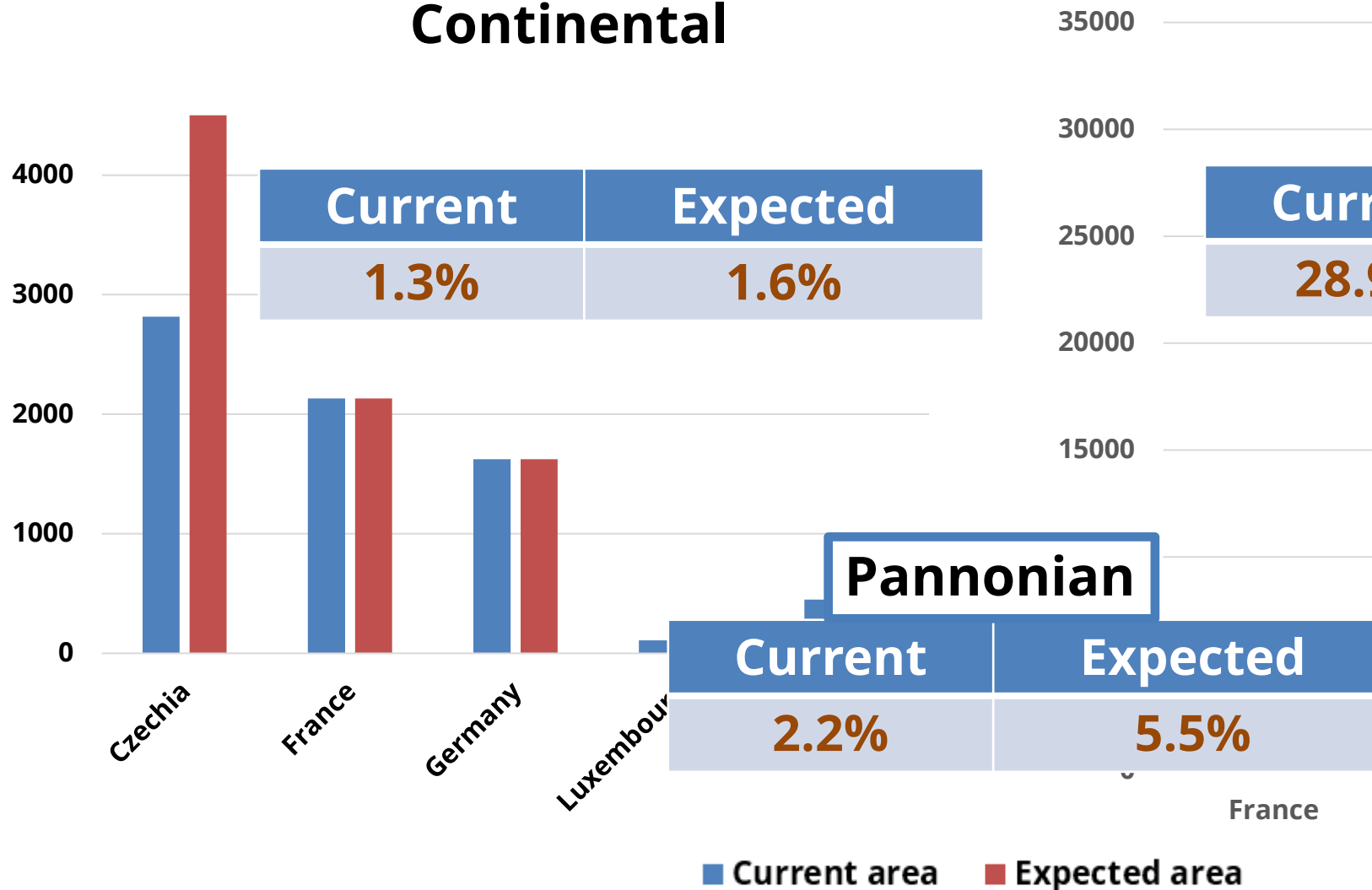
Pannonian	Current	Expected
Czechia	0	16

- **Czechia** – “The pivotal means of fulfilling the Czech pledge are the OECMs, predominantly encompassing tools for general landscape protection outlined in Czech legislation.”

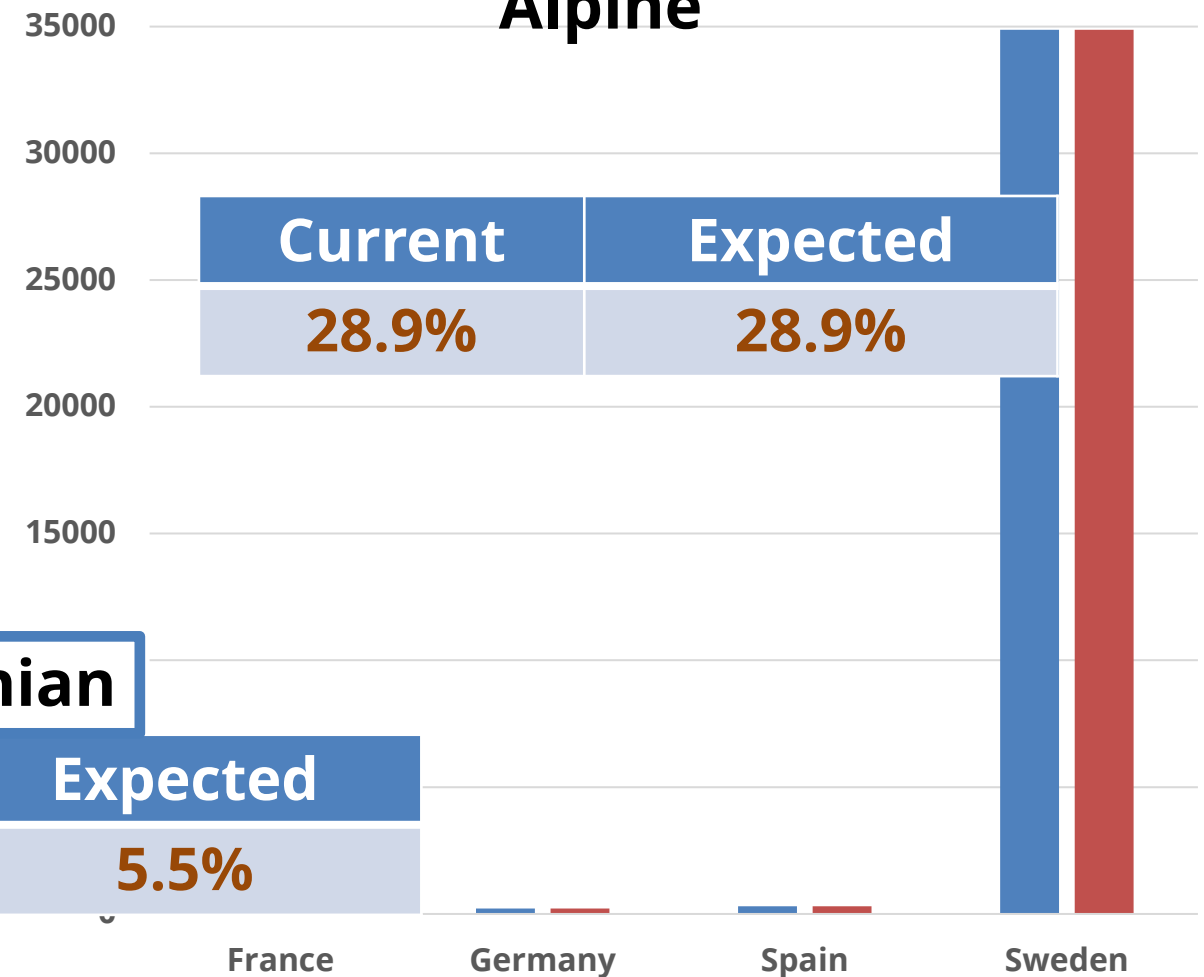
Information submitted in the pledges (table 1.3)

General information: Total current and expected area under strict protection (km²)

Continental



Alpine



Information submitted in the pledges (table 1.4)

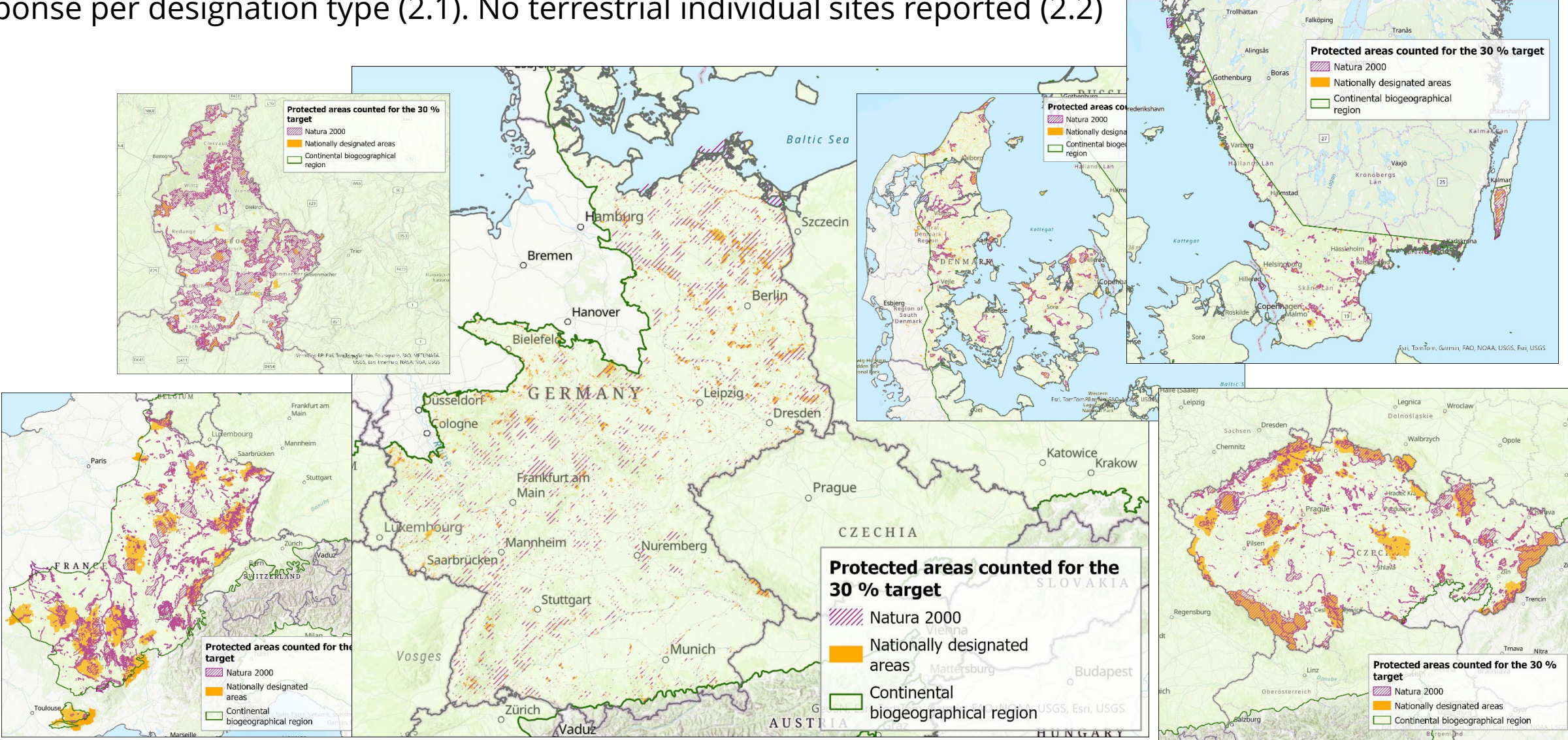
General information: Coherence of the network

- **FR** – “Based on a diagnosis of the ecological challenges, pressures and gaps in the existing network of protected areas, plans [exist to] identify protected area projects, including those under strong protection, to which France is committed by 2030.”
- **LU** – “... ecological connectivity between protected areas should and will be further strengthened while taking into account the specificities of target habitats and species. In this context, the legal and regulatory protection of biotopes and habitats should and will be ensured, as well as the promotion of various landscape structures or other "stepping stones", or the extensive use of areas suitable for biodiversity.”
- **SE** – “Coherence and ecological connectivity is a priority basis in forest habitat and is further elaborated in The national strategy for the formal protection of forest. ... There is a national strategy for the protection of freshwater environments with high natural and cultural values that aims at increasing representativity and coherence.”
- **DE** - The biotope network is defined in the Federal Nature Conservation Act - partly specified in state laws - and should cover at least 10% of the state's area. ... The biotope network should, among other things, contribute to the coherence of the "Natura 2000" network.
- **CZ** – Aims to combine OECMs and protected areas. “Any identified gaps are intended to be rectified by the year 2030 with the aim of ensuring adequate protection of natural habitats that these sites host. This approach ensures synergy with the Nature Restoration Law and strengthens the coherence and connectivity of the network of protected areas.”

* **ES & DK** – no terrestrial comment

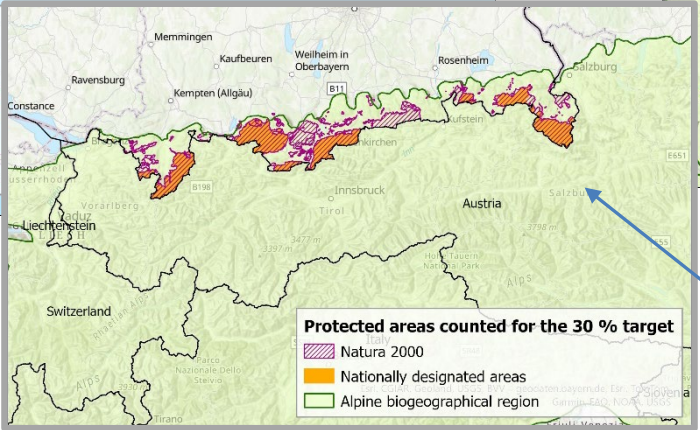
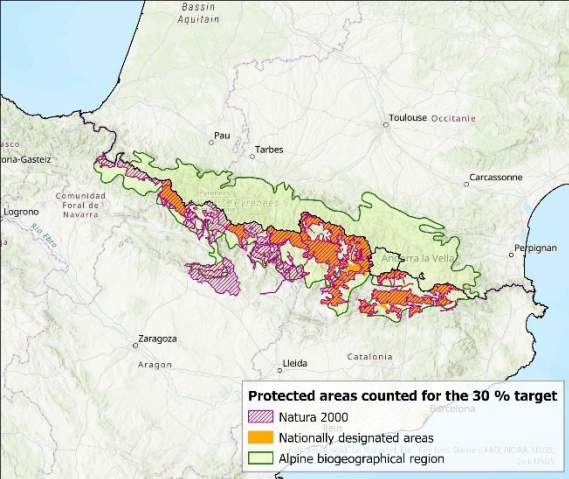
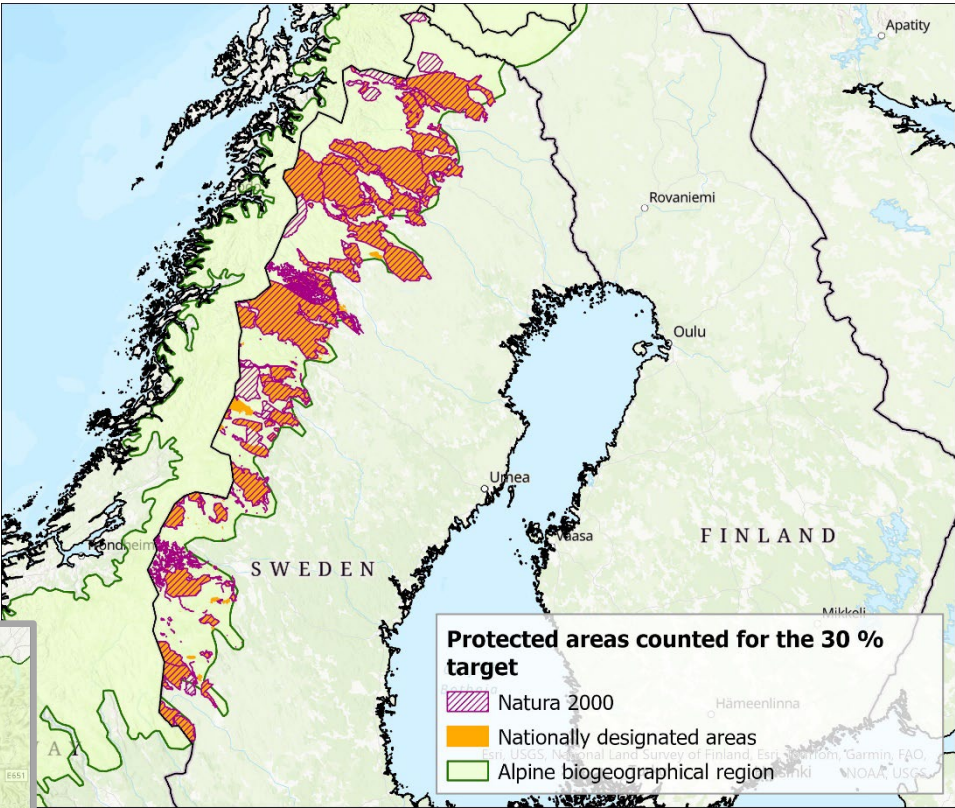
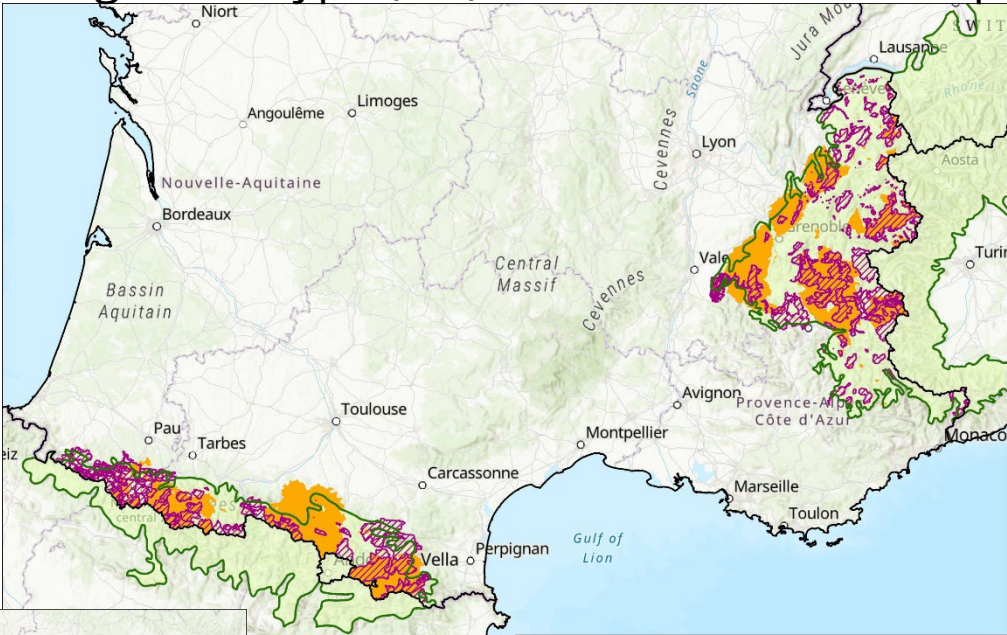
Information submitted in the pledges (table 2.1)

Current terrestrial protected areas to be counted towards the 30% target in Continental region
- response per designation type (2.1). No terrestrial individual sites reported (2.2)



Information submitted in the pledges (table 2.1)

Current terrestrial protected areas to be counted towards the 30% target in Alpine region
 – response per designation type (2.1). No individual sites reported (2.2)



Protected areas counted for the 30 % target

- Natura 2000
- Nationally designated areas
- Alpine biogeographical region

German Alpine

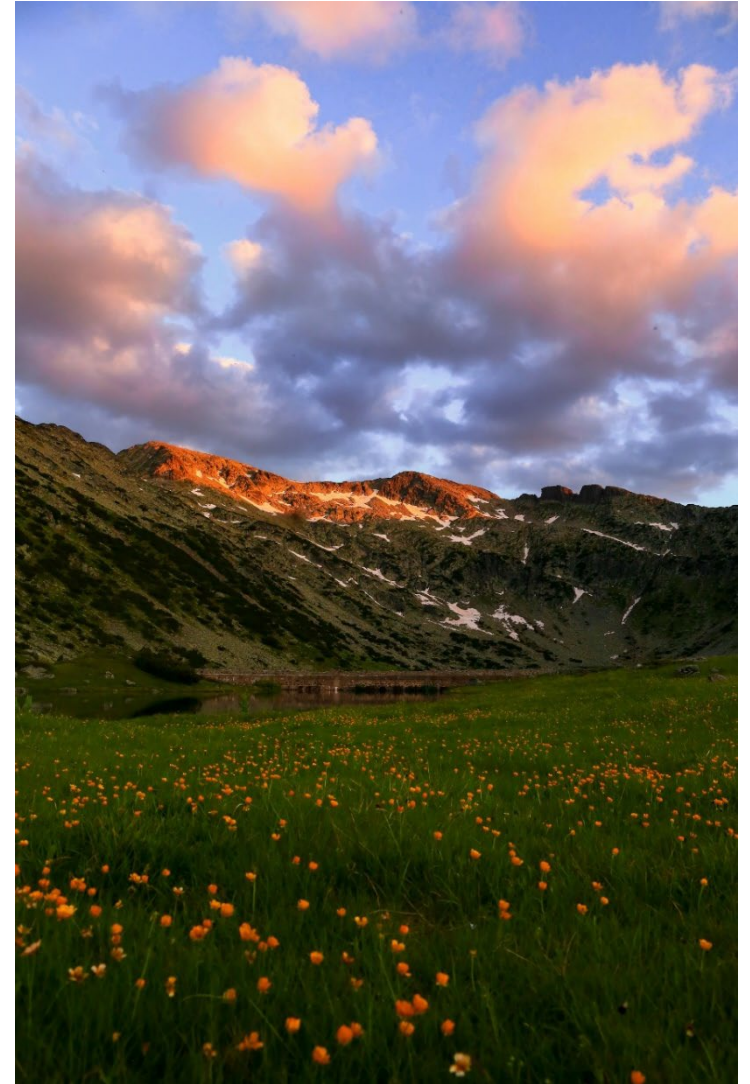
Information submitted in the pledges (table 3)

OECMs already reported in the NatDA that should be counted towards the 30% target

- No specific OECMs provided in the pledges
- **France** – “to date, France has not officially recognised the OECMs. However, work has been initiated to define criteria for the recognition of these tools”

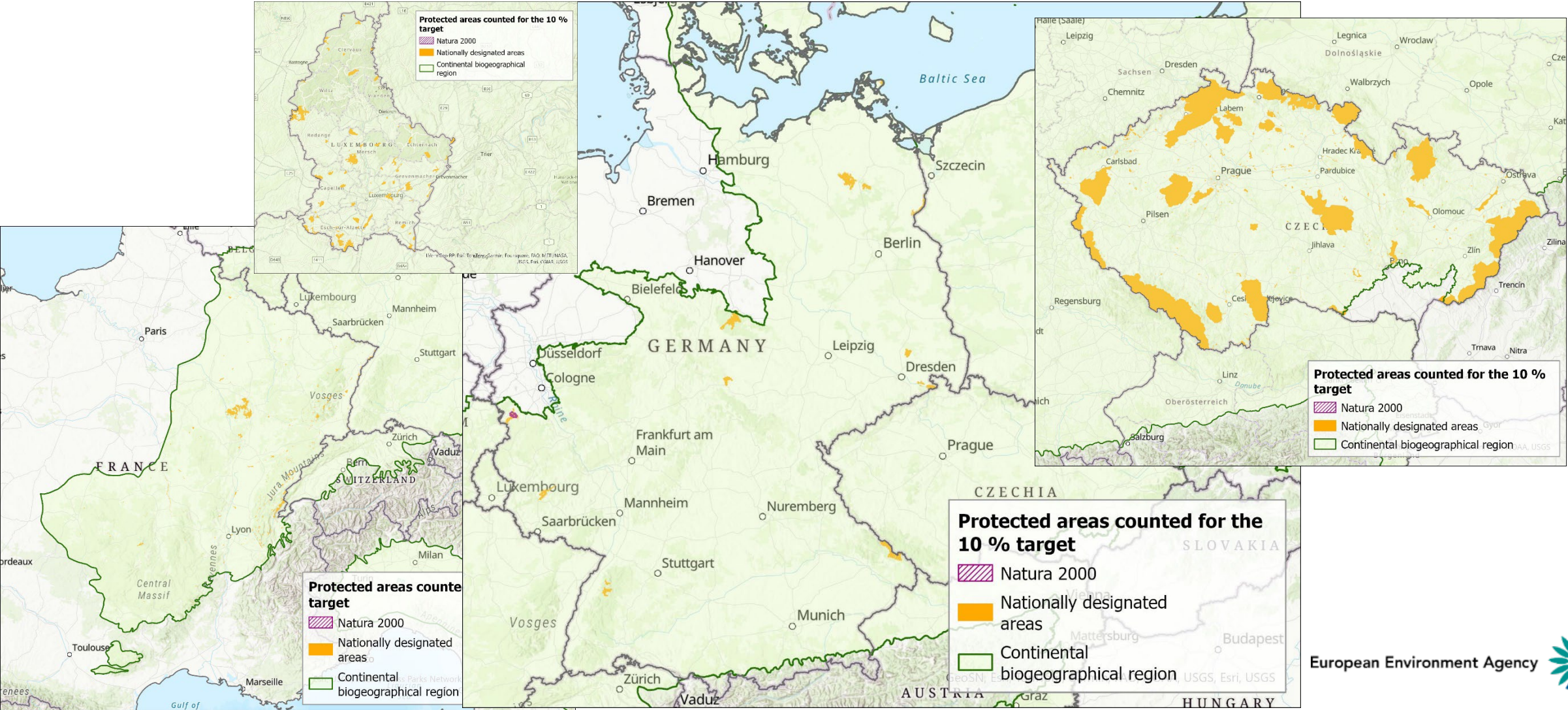
Potential implications for coverage statistics in the countries

- Please consider at national level excluding the designation types or areas that should not be counted towards the **30% target** from future submissions under the Nationally designated areas data flow.
- It has implications for the figures considered for the **global 30% target** under the **CBD GBF** as Nationally designated areas are provided by the EEA to the World Database of Protected Areas which is used to track progress towards global targets on protected areas



Information submitted in the pledges (table 4.1 & 4.1)

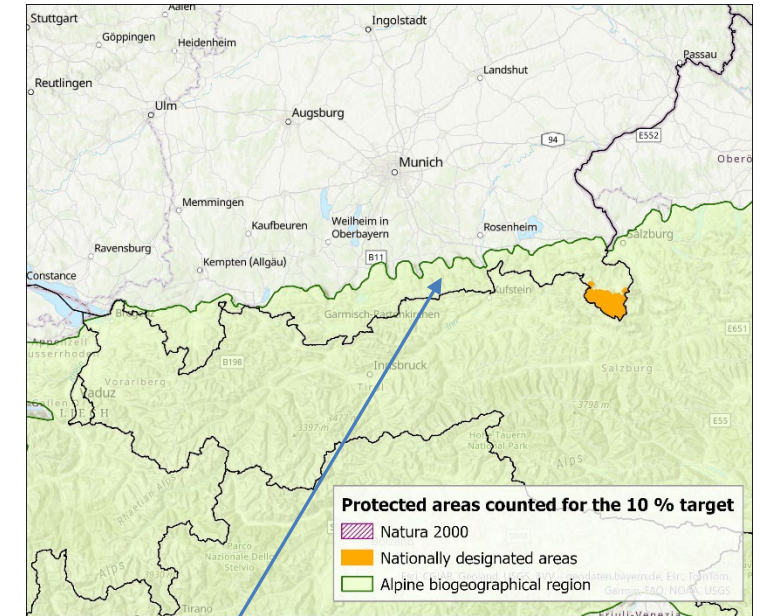
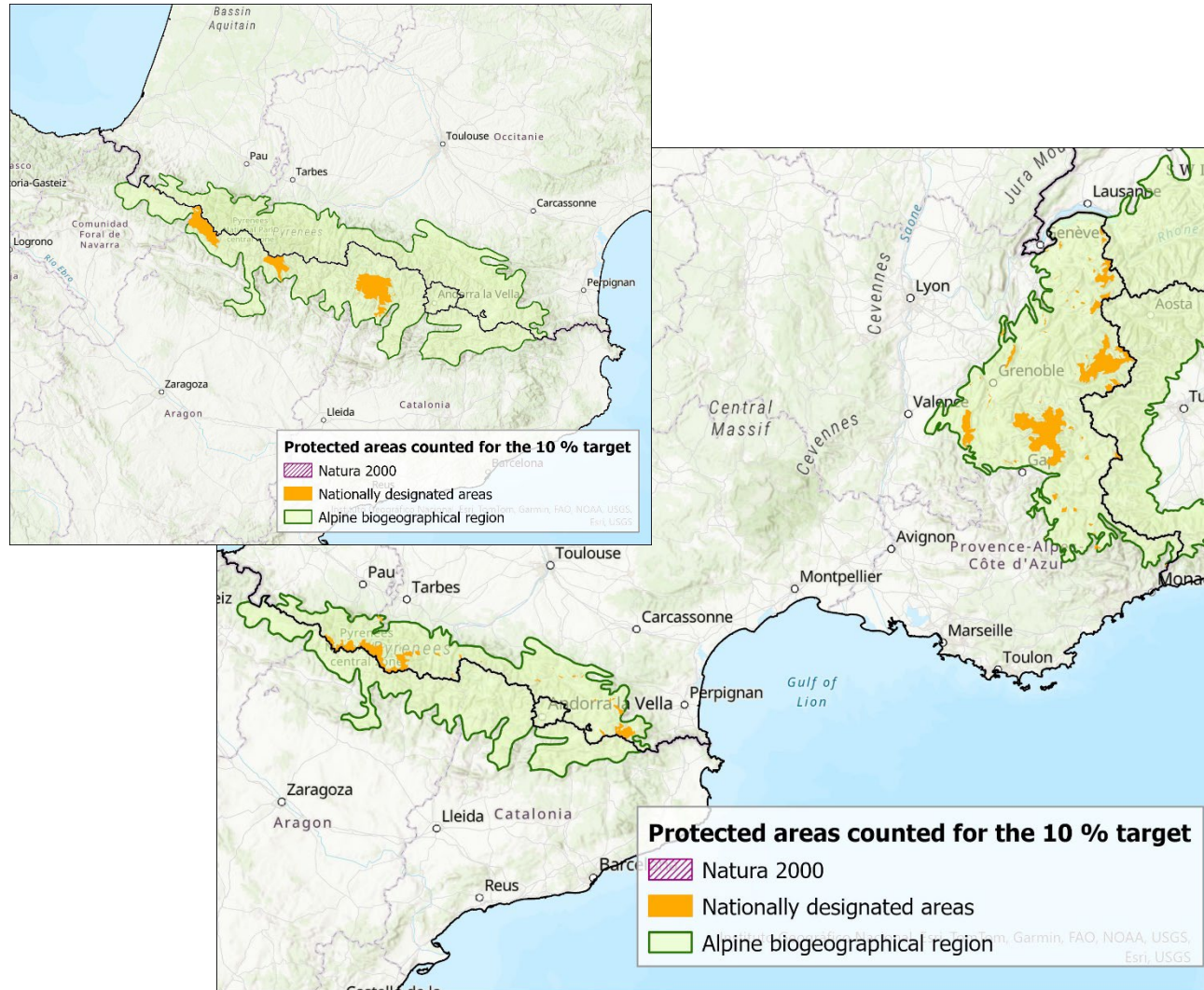
Current protected areas to be counted towards the 10% strict target in Continental region
– response per designation type (4.1) and individual sites reported (4.2)



Information submitted in the pledges

Current protected areas to be counted towards the 10% strict target in Alpine region

- response per designation type (4.1) and individual sites reported (4.2)



German Alpine

Information submitted in the pledges (table 5)

Pledges for future protected areas and OECMs

Czechia

- Pledges 19 new sites, mostly OECMs and site types not yet defined but also a few Natura 2000 sites.

Germany

- Pledges the intention to increase the area under the protection categories and sees it as a longer process to assess the contribution of current designation types to the targets.

France

- Will not pledge as “the implementation of the national strategy for protected areas 2030 is based on a bottom-up approach. ... The approach must include commitments regarding protected areas and high protection zones ...”

Luxembourg

- 59 pledges mainly for extension of Natura sites but also for some new sites not defined

Thank you

