



Implementation of the Protected Areas pledge in Luxembourg

Continental Biogeographic seminar,
Prague

25-27 June 2024

Elisabeth Kirsch



THE GOVERNMENT
OF THE GRAND DUCHY OF LUXEMBOURG
Ministry of the Environment,
Climate and Biodiversity



- Pledging process preceded by planning of new National Biodiversity Strategy
- PNPN = Strategic instrument for implementing nature protection policy
- Planning process
- Definition of targets
- Adopted by Governing Council
- Of public interest





- Targets for 2030
- Measurable actions 2026 & 2030
- 4 pillars



Protection

3 targets / 15 actions



Restoration

9 targets / 51 actions



Transformation

4 targets / 43 actions



International

2 targets / 9 actions

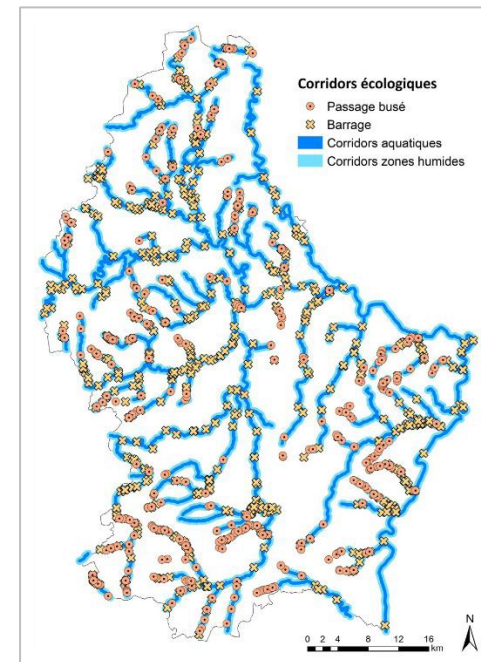
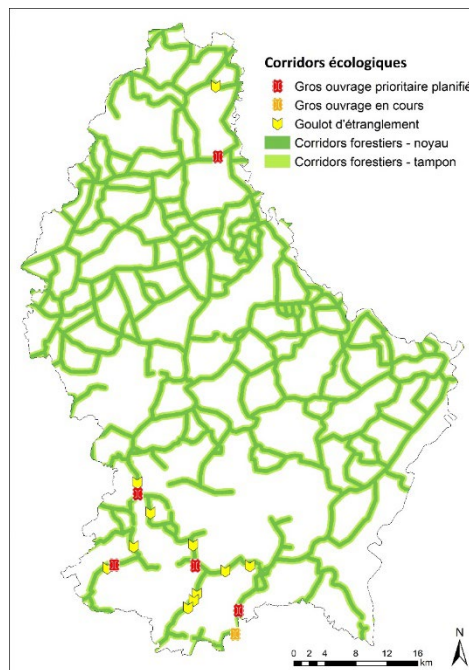


- Alignment of targets
PNPN3 ↔ EU BDS & Pledges
- Coherent network of protected areas
 - 30% of territory under protection → 77 592 ha
 - 1/3 strictly protected → 25 864 ha
 - Effective management





- Ecological corridors
 - Forests – Wild cat
 - Rivers & wetlands
- Interaction with targets from restoration pillar
- Planning of new corridors
 - Ponds
 - Grasslands
 - Light pollution

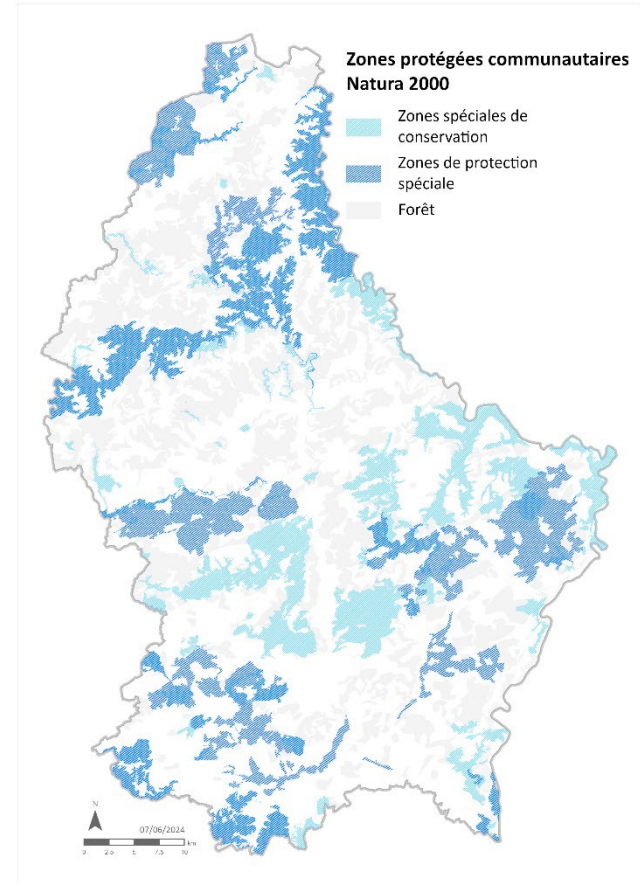




- Mainly Natura 2000: 67 sites
 - 49 SAC
 - 18 SPA
- Network considered complete



NATURA 2000
LËTZEBUERG



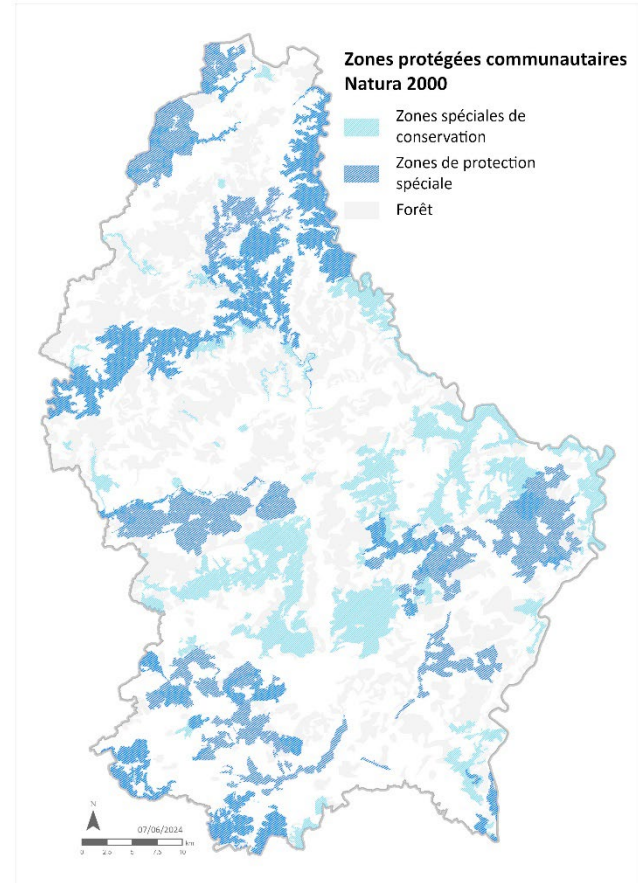


- Review of boundaries in 2021-2023
 - Update of conservation objectives & measures
 - Inclusion of adjacent state-owned land
 - Private land included at owner's request

- Regulatory procedure ⇒ publication
 - Public consultation
 - Approval of governing council

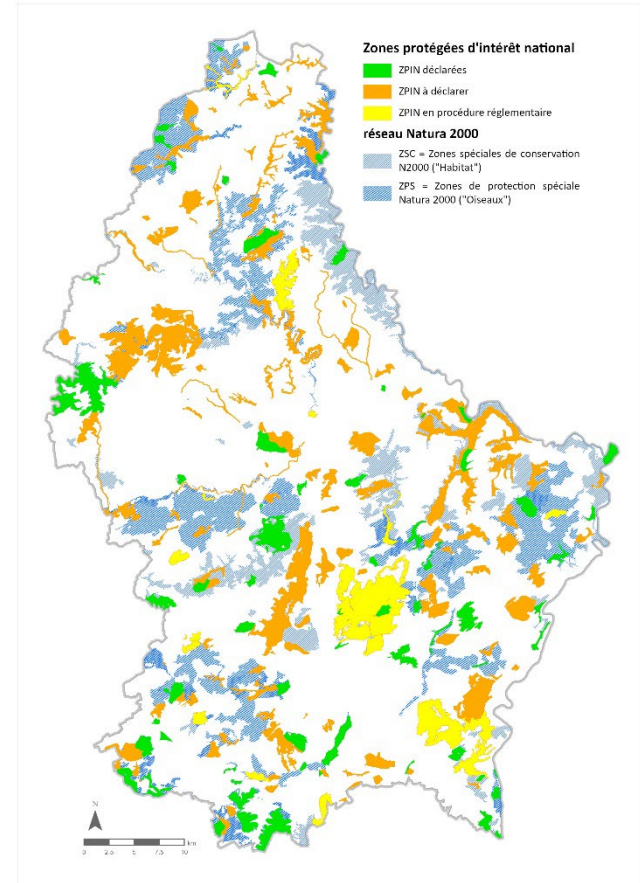
- Process lead by Ministry of the Environment

- Adaptation of management plans



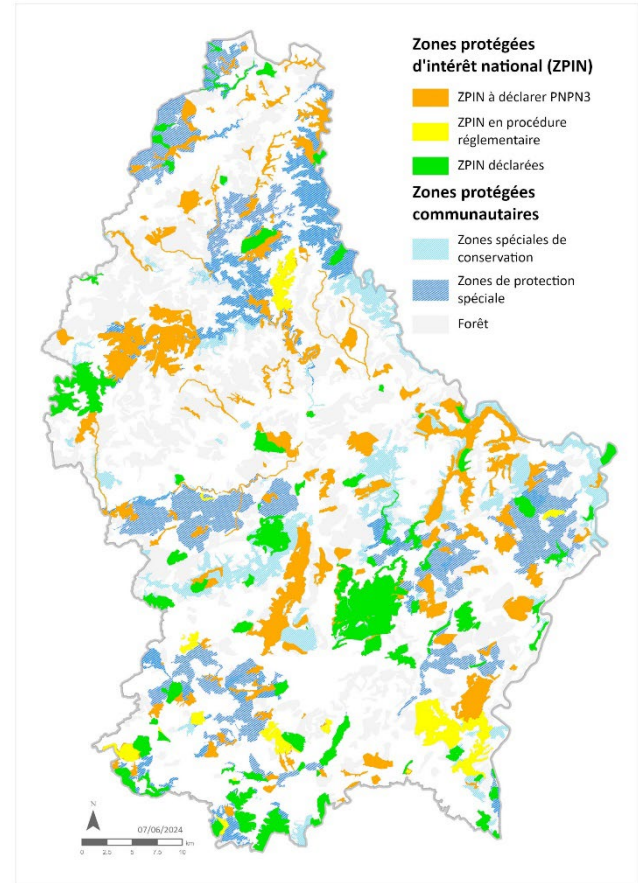


- Status at time of pledging (Feb. 2023):
28.05% ⇔ 72 551 ha





- Status at time of pledging (Feb. 2023):
28.05% ⇔ 72 551 ha
- Current state (June 2024):
28.98% ⇔ 75 150 ha
- Progress since pledging:
0.93% ⇔ 2 599 ha





- Protected areas of national interest (ZPIN)
 - Procedure according to nature protection law → legal basis
 - No management or limited management that is necessary to maintain/restore habitat condition
 - Strict & precise constraints, including bans

Practical approach

- Declaration ⇒ publication (of public interest)
 - Dialogue with municipalities, land owners & farmers
 - Presentation to public
 - Regulatory procedure
- Process lead by Nature and Forest Administration



Zone protégée
Naturschutzgebiet



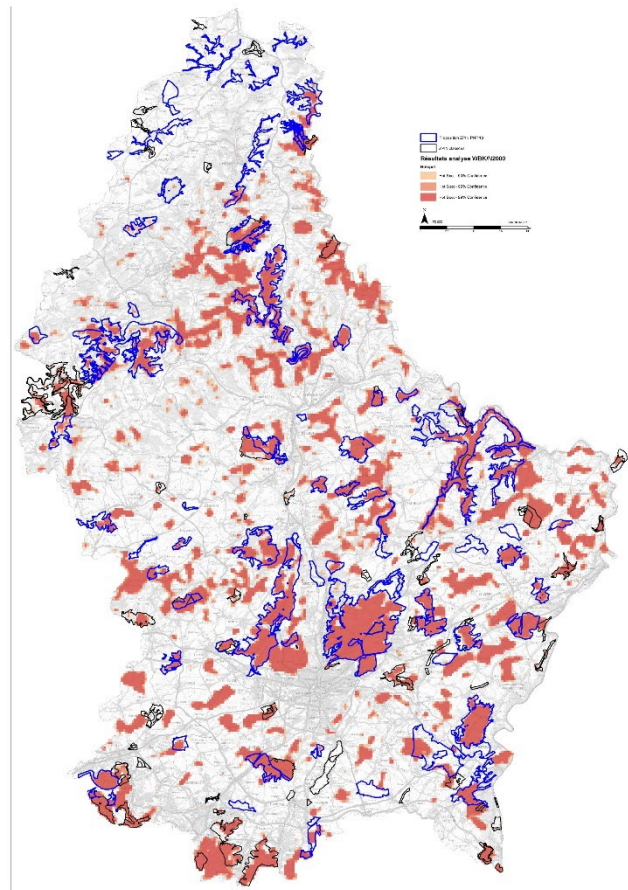
Administration
de la nature et des forêts
Grand-Duché de Luxembourg



- Status at time of pledging (Feb. 2023):
4.16% ⇔ 10 760 ha

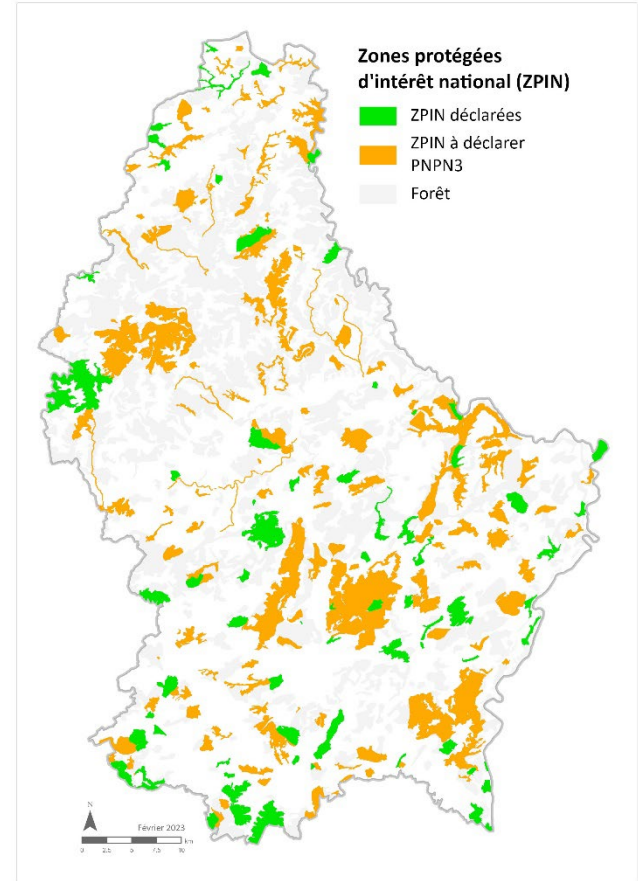
Determination of sites to be declared

- Revision of PNPN2 list
- Identification of additional sites
 - Hotspot analysis of (rare) forest habitat types
→ Distribution in state-owned forests
 - Hotspot analysis of wetlands
 - Expert opinion on valuable grassland sites
 - Analysis of rivers based on hydromorphological & biological criteria





- Forest reserves – approx. 1/3 integral (RFI)
→ 10 000 ha
- Nature reserves – open landscape/grassland
→ 5 000 ha
- Nature reserves – rivers
→ 600 ha





Designation roadmaps for strictly protected areas

- Analysis of forest reserves (including RFI) already in regulatory procedure
→ approx. 4/5 of target
- Analysis of planned RFI in contiguous state-owned forest → most feasible approach to reach rest of target
- No stratification by ecological sector, factor however taken into consideration
→ less forest reserves in the North, but also less state-owned forest





Designation roadmaps for strictly protected areas

- Stratification across country
- Analysis of municipalities
→ avoid multiple sites
- Similar surface across years (+/- 700 ha)
- Political will





Designation roadmaps for strictly protected areas

- ⇔ River basin management plan → Water Management Administration (AGE)
- Analysis of restoration projects already underway → designation conducive to implementation of planned measures (riparian strips, development corridors)
- Analysis of period to reach good ecological status by – 2027/2033



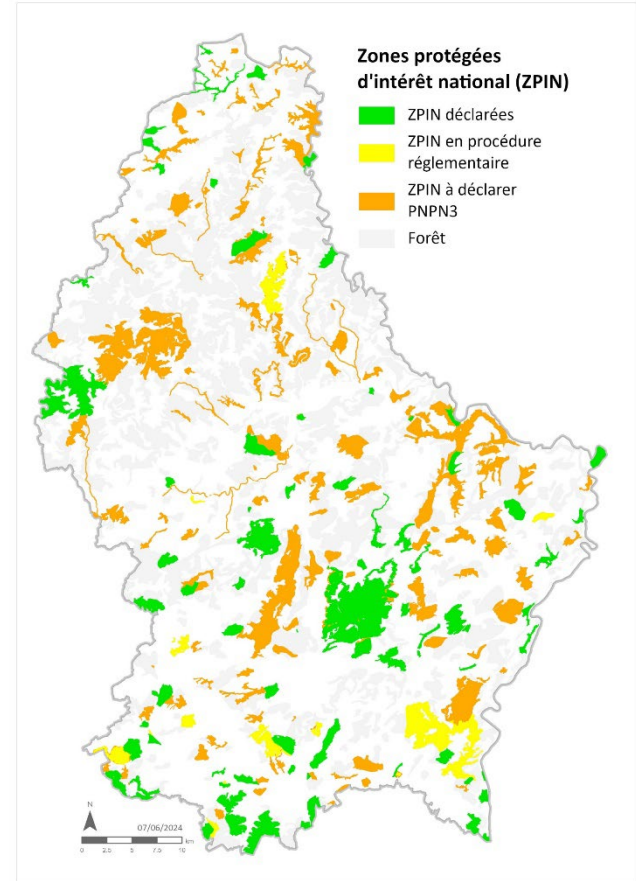
Administration
de la gestion de l'eau
Grand-Duché de Luxembourg



Strict protection



- Status at time of pledging (Feb. 2023):
4.16% ⇔ 10 760 ha
- Current state (June 2024) → 77 sites:
5.87% ⇔ 15 222 ha
- Progress since pledging → 7 sites:
1.71% ⇔ 4 462 ha





Funding

- Environmental Protection Fund
- Nature and Forest Administration

Attitude towards level of ambition

- Implementation of PNPN3
 - public interest
- Identical targets for pledges
 - Government's support
- But: Promotion of forest reserves more intensive
 - less prone to conflict



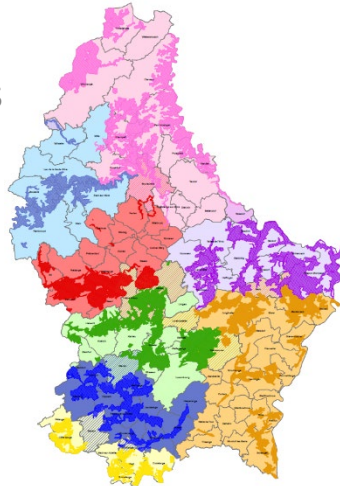


- Opposition of stakeholders to nature reserves from the start
 - Clarify that classification file serves as basis for discussion
 - Boundaries not yet fixed
- Increase willingness to own land in protected areas
 - Agri-environmental measures
 - Contractual conservation measures for farmers
→ New regulation including financial top-ups
 - “Grassland” strategy
 - Greater financial support for land acquisition
 - Cooperation with agricultural advisors
- Maintain level of ambition despite changes in government





- Management plans for all sites with clearly defined conservation objectives & measures
- Species & habitats action plans
- Calls for projects
- River basin management plan
- Coordination & facilitation
 - Groups for overarching issues
 - Natura 2000 steering groups
- Biological stations
- “Naturpakt”



Thank you for your attention!



LE GOUVERNEMENT
DU GRAND-DUCHÉ DE LUXEMBOURG

➤ Questions?

➤ emwelt.lu

➤ natura2000.lu

