



Likvidace invazních
druhů v praxi



Norway
grants



STÁTNÍ FOND
ŽIVOTNÍHO PROSTŘEDÍ
ČESKÉ REPUBLIKY

Elimination of invasive species in practice Case study from Šumava NP

Kateřina Berchová Bímová, Martin Vojík, Martina Kadlecová, Daniel Franke, Daniela Steinbachová, Pavlína Hakrová

FŽP ČZU v Praze

Contact: invaze@fzp.czu.cz

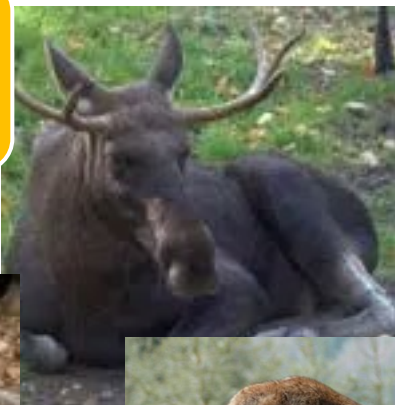
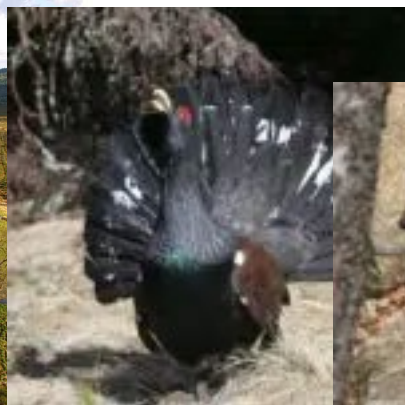
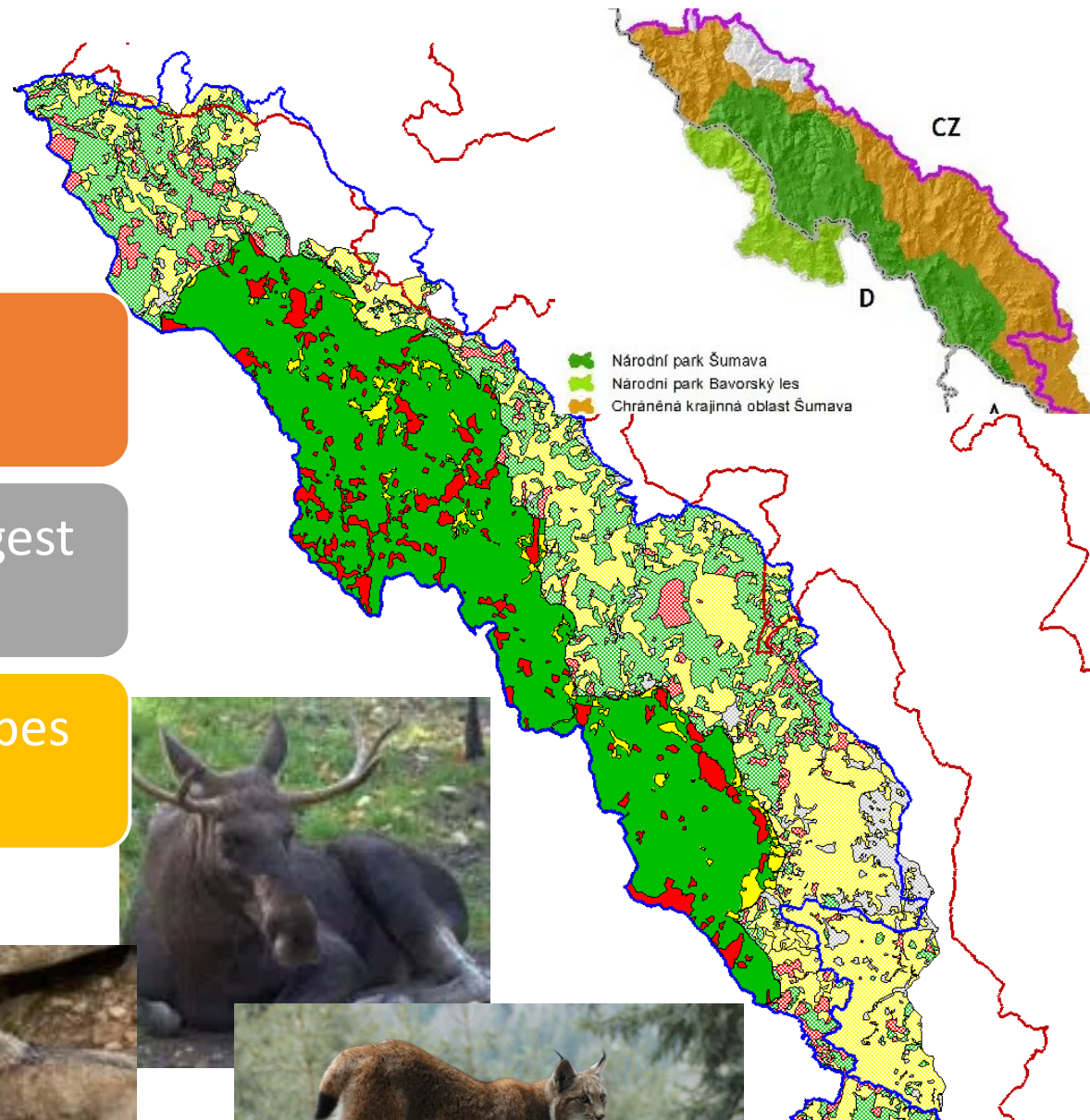
Norway funds the project through the Norwegian Funds as part of the Rago call under the administration of the State Environmental Fund of the Czech Republic, project number **3211100010**

NP and PLA Šumava

NP Šumava 683 km² and PLA Šumava 995 km²

Together with Bavarian forest forms one of the largest forest complex in Central Europe

Ecosystems of Central European mountain landscapes – forests, glacial lakes, peat bogs and meadows



Grasslands in Šumava

Primary treeless areas – peaty wetlands

Secondary treeless areas – alpine and mountain meadows and pastures

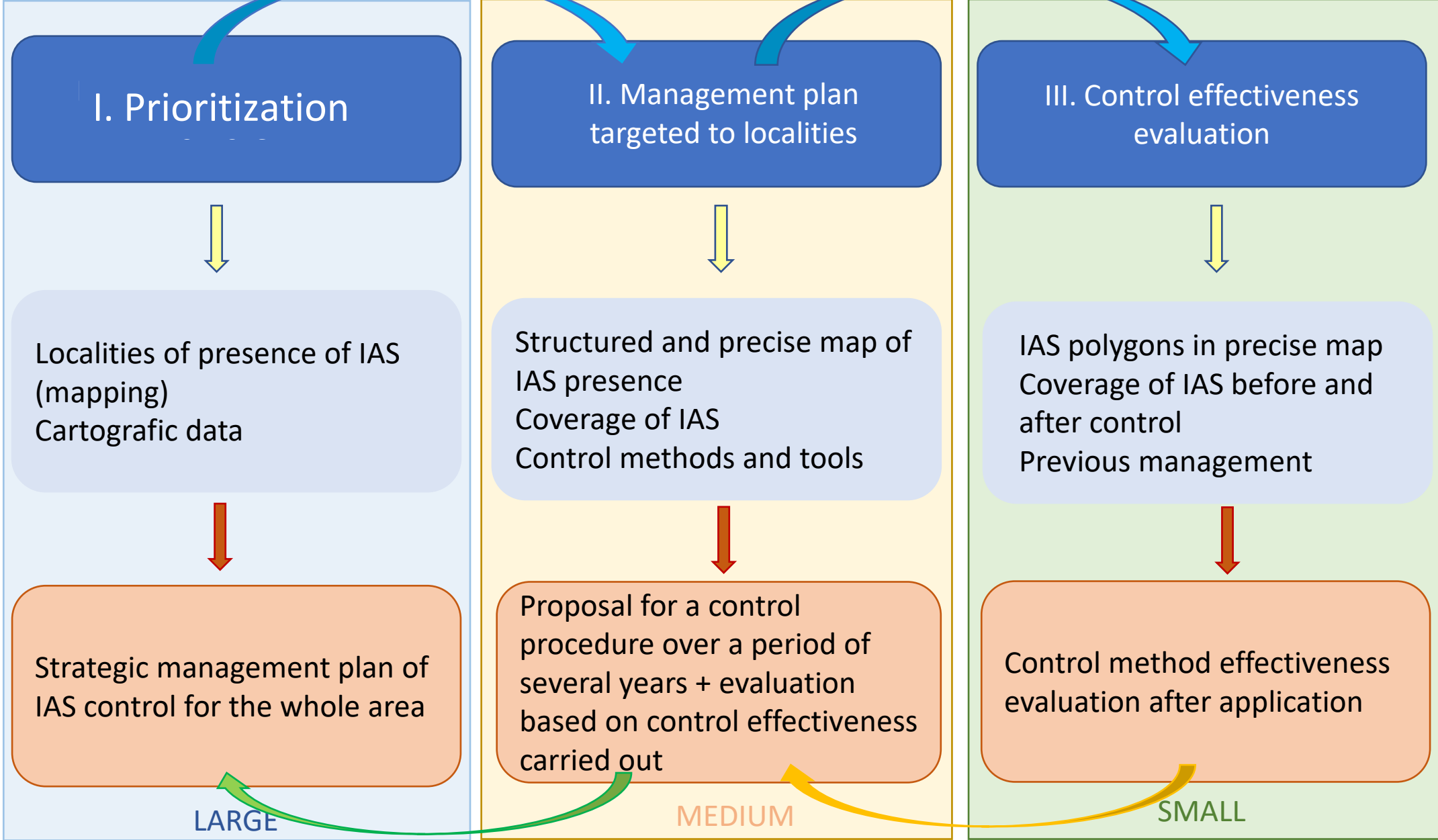
Azonal treeless areas - relicts of wetland and frost treeless areas, spring areas, etc.



Invasive species in Šumava



Management approach



Mapping of IAS

Records of all IAS and their coverage at the locality

Habitat type

Vectors of spreading

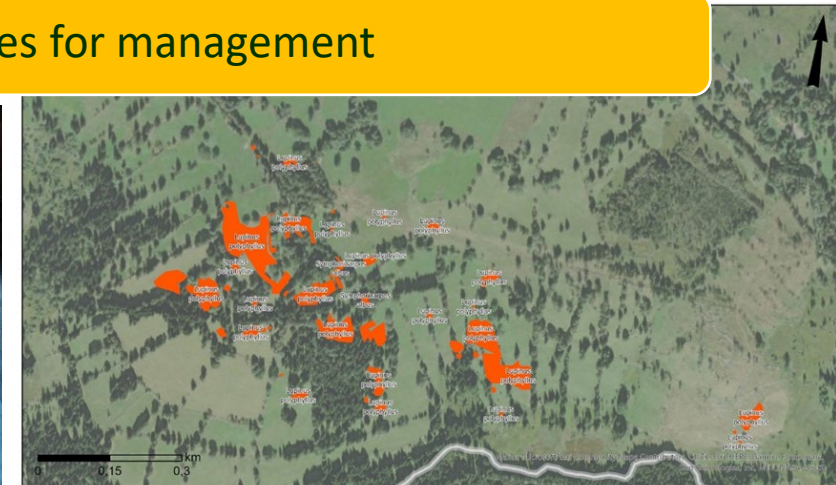
Phenology stage

Vitality

Management type

Output – the layer with polygons of IAS presence

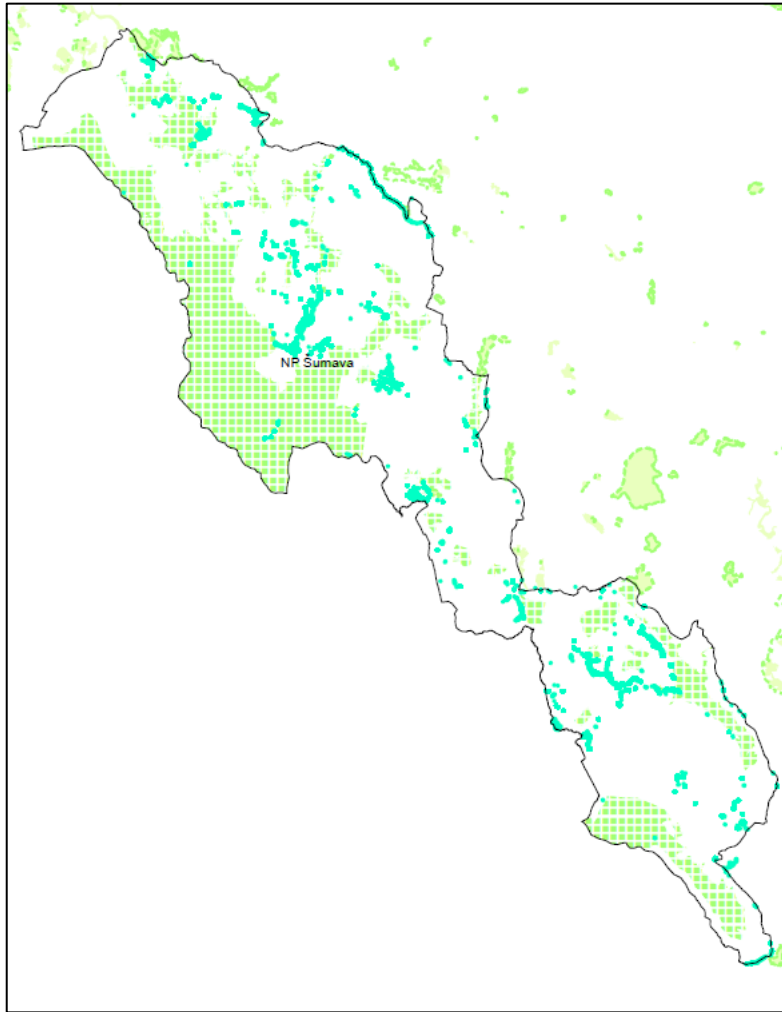
→ Prioritization of localities for management



Mapping of IAS

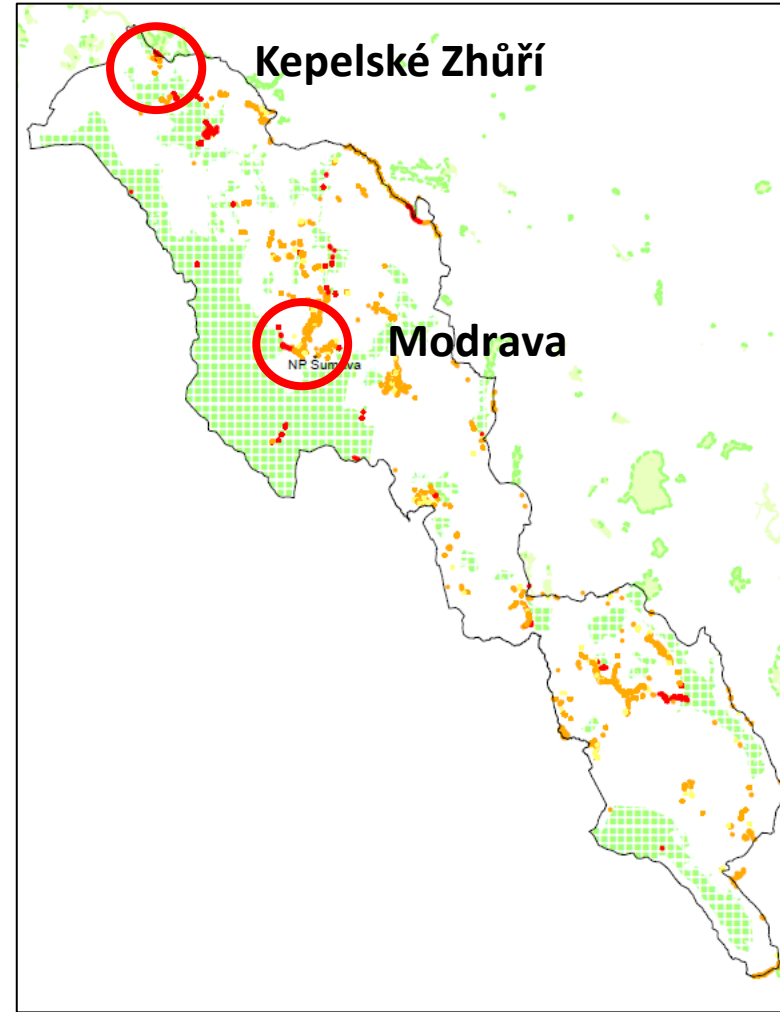
Prioritization

- IAS
- SPA, I. zone NP



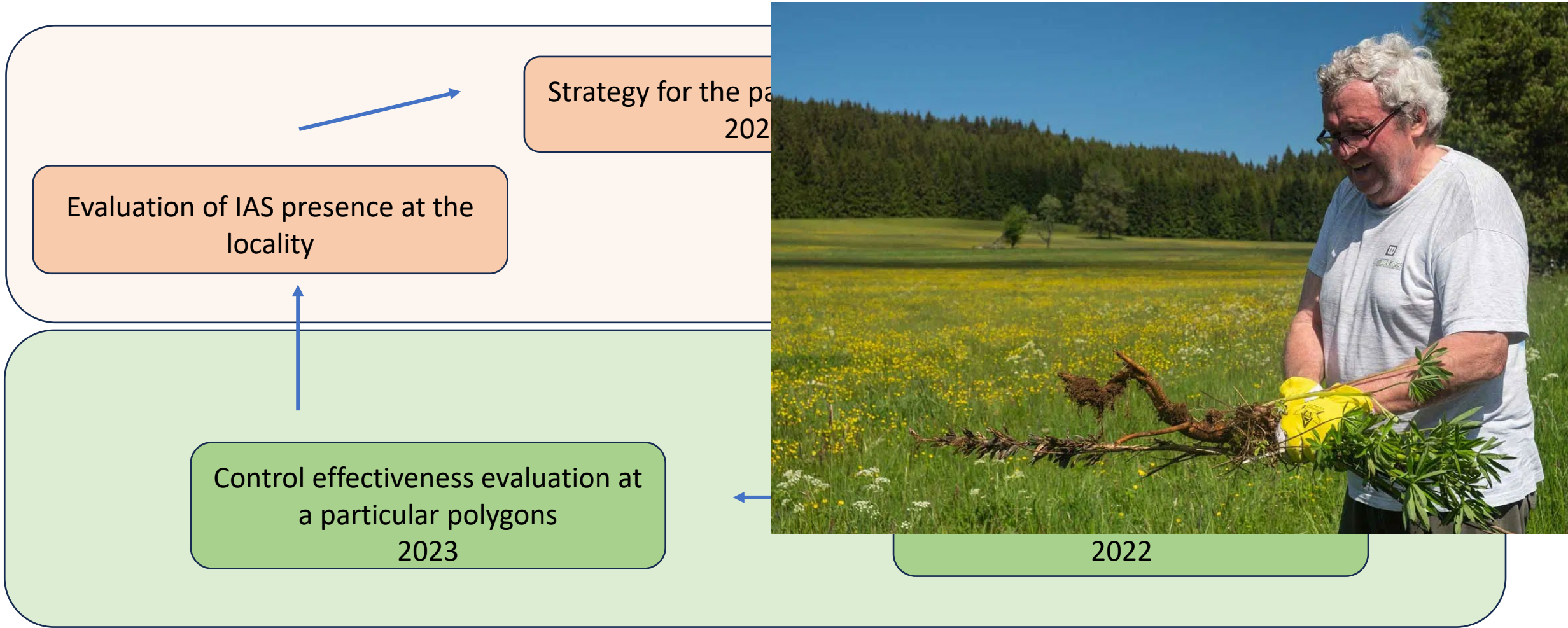
Localities of *L. polyphyllus* in NP Šumava

- High priority
- Middle priority
- Low priority



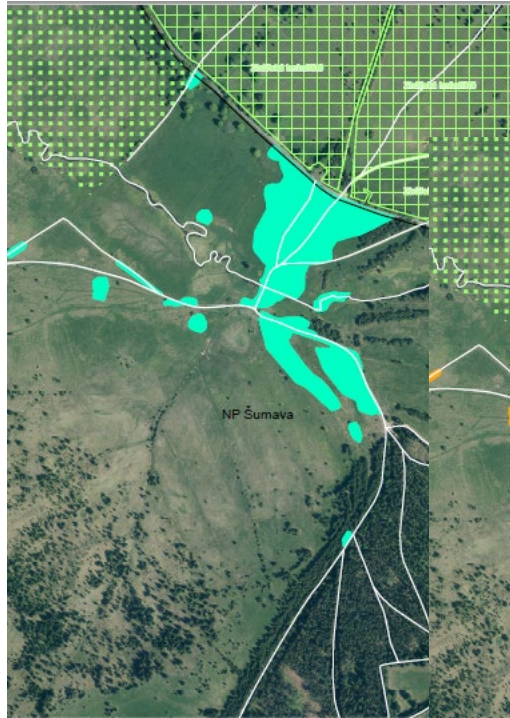
Prioritization for management of *L. polyphyllus* in NP Šumava

II. Management plan targeted to localities

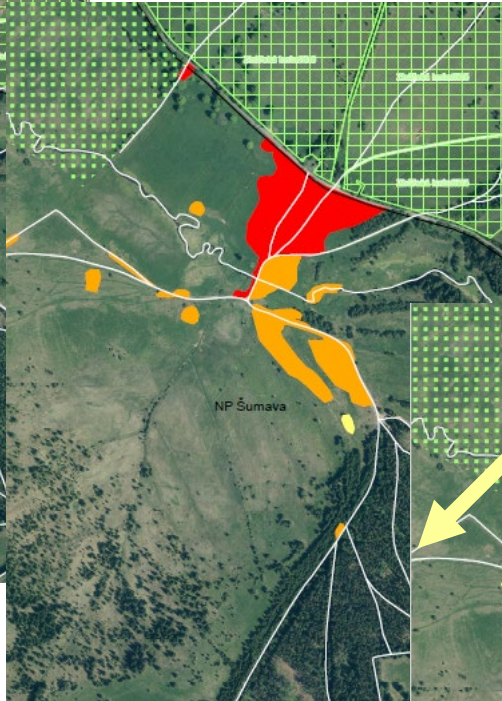


III. Control application and effectiveness

Kepelské zhůří

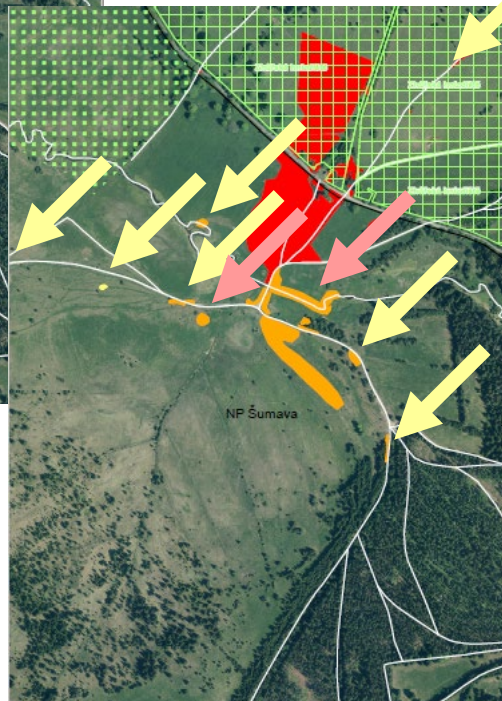


Mapping NP



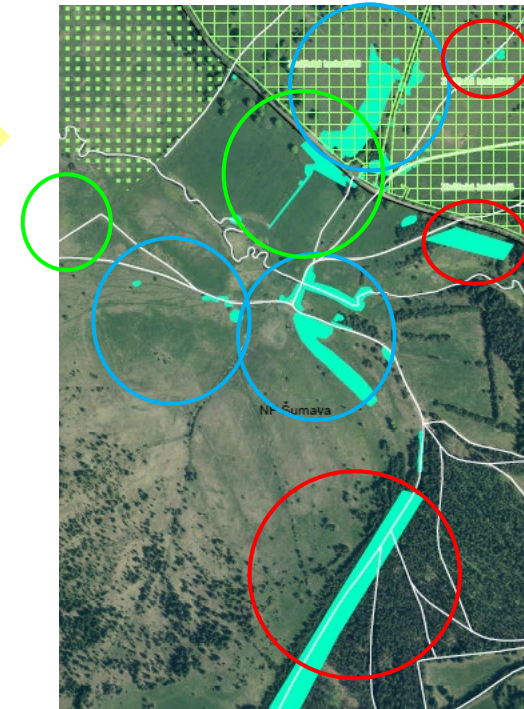
Prioritization NP

Prioritization within for NP and PLA



Prioritization NP +PLA

Strategy within the locality



Control effectiveness evaluation

Decreasing of area infested by *Lupinus*

Decreasing abundance of *Lupinus*

Newly found presence of *Lupinus*

Invasive species control:

- Takes a very long time and needs enormous effort
- A well-thought-out strategy is needed
- It is necessary to watch out for new outbreaks





Likvidace invazních
druhů v praxi



Norway
grants



STÁTNÍ FOND
ŽIVOTNÍHO PROSTŘEDÍ
ČESKÉ REPUBLIKY

Thank you for your attention

... and thanks especially to project partners and collaborators

More info: <https://ragoinvaze.fzp.czu.cz/en>

